

**FREE**  
midweek  
newspaper

yourashford.co.uk

# yourashford



Issue No 59

Available from Wednesday,  
October 22, 2008

THE NEWSPAPER FOR ASHFORD, TENTERDEN AND SURROUNDING VILLAGES

## HEALTH & BEAUTY

Tips and treatments to help you look good and feel even better - See inside



# FREE SWIM PLAN TAKES NOSE DIVE

### WHAT'S ON & WATCH

yourkenttv.co.uk



CAMPAIGN: Washing your hands really does save lives. See our NHS film. Search 'wash'

### ALSO INSIDE

- COMPETITION ..... PAGE 15
- LETTERS ..... PAGES 16-17
- LEISURE ..... PAGES 19-26
- PROPERTY ..... PAGES 27-34
- BUSINESS ..... PAGE 45

ISSN 1753-117-9



9 1771753 117000



## NORTH SCHOOL MUSICAL

It's taken our youngsters by storm - and now Disney sensation High School Musical is set to put a song and dance into children's steps this half-term. Professional theatre company New World Productions will run a special workshop all week at the North School in Essella Road culminating in a production of High School Musical 2 in front of family and friends. The third film in the series is in cinemas now.

FULL STORY - SEE PAGE 3

BY ED HILL

A SCHEME to offer free swimming to all under-16s and over-60s risks sinking without trace in the council chambers this week.

The ambitious Government-proposed project could result in a "significant financial risk" for the council, it is claimed, and faces choppy waters if it is to get the backing it needs to be introduced across the borough.

The two-year initiative has been proposed by the Department of Culture, Media and Sport as part of a £140m fund to boost sport and fitness ahead of the 2012 Olympic Games in London.

But critics say the fund is insufficient to cover the enormous costs of the proposal and would leave both the Ashford and Tenterden leisure trusts, which operate the swimming pools in the borough, facing significant losses.

And it could result in £750,000 of local taxpayers' cash being used to support the scheme. Councils had to express an interest in taking up the scheme last month and tomorrow will decide whether to fully adopt the proposal.

But a report by Mark Carty, head of cultural and project services, warns of the risks to the borough's bank balance - despite the potential benefits to our health.

The report says the money available from Government will not cover the costs and the council would have to rely on additional funding from the Primary Care Trust. They also have concerns the funding from central government is only over two years and members of the public would blame the council if the free scheme was scrapped because that funding had ended.

The plans were given a high profile launch by the Prime Minister in June this year as  
CONTINUED ON PAGE 2



# UP TO 50% OFF

CHRISTMAS FAYRE ROYAL MUG PAIR

Bone China

Original Price **£12.99**

**SALE PRICE £6.49**

See our main  
advert on  
**page 8**

## NASONS

Nasons Department Store  
47 High Street, Canterbury, CT1 2SB  
01227 456755 www.nasons.co.uk  
ons Furniture, Carpet and Bed Centre  
Maynard Road, Wincheap Estate,  
Canterbury, CT1 3RQ. 01227 463550

**WHAT'S ON & WATCH**  
**yourkenttv.co.uk**

**TOP TV CLIPS**



**1** One of the county's top fire crews are on the hunt for new recruits. See the leisure channel @ yourkenttv.co.uk



**2** Gillingham's new skipper Barry Fuller talks about his new role leading out the team. See the sport channel @ yourkenttv.co.uk



**3** It's not just local news we offer online; there's national headlines too. See the news channel @ yourkenttv.co.uk

**SEE OUR SISTER PAPERS KENT ON SUNDAY AND THE SATURDAY EDITION FOR ALL THE WEEKEND'S COUNTY NEWS AND SPORT**

EDITOR: Chris Britcher 01303 817171  
GROUP EDITOR: Gary Wright 01303 817032  
WEBSITE: www.yourashford.co.uk  
TELEPHONE ADVERTISING: 01303 817110  
FAX: (Advertising) 01303 817002  
EMAIL: Editorial: yourashford@kosmedia.co.uk  
Sales: advertising@kosmedia.co.uk  
HEAD OFFICE ADDRESS: Apple Barn,  
Hythe Road, Smeeth, Ashford, Kent TN25 6SR  
Printed by Newsfax  
© 2007 KOS Media. yourashford.co.uk by KOS Media award-winning publications

**KOS**  
media

# Reassurance that campus will go-ahead

■ BY ED HILL

SOUTH Kent College principal Monica Box has reassured councillors and the public over any remaining doubts concerning ambitious plans for the multi-million pound learning campus planned for Ashford.

Speaking during the annual State of the Borough Debate at the council chamber in the Civic Centre last week, Mrs Box said funding was still secure for the scheme which would see a 'landmark' building erected on Victoria Road.

Mrs Box said the Learning and Skills Council, which funds further education, had "a huge amount of goodwill" towards the project.

It is hoped the site will become the joint headquarters of the new college formed by the proposed merger of South Kent College and Tonbridge-based West Kent College.

The State of the Borough Debate once again provided a melting pot for locals and decision makers to meet and share their views, with the council's Sustainable Community Strategy, which sets out the authority's vision for the borough over the next decade, the key discussion point.

In addition, those attending the public meeting were given addresses on six key areas by officials involved in the life of the town.

Topics included; learning for everyone, economic success and housing, health, safer communities, transport and enjoying life. After each the public were able to ask questions and probe the experts.

Head of planning Richard Alderton addressed the audience about future housing and attracting new jobs.

Concerns were raised by councillors that there was an oversupply of flats in the borough, echoing concerns voiced recently by housing



**CONFIRMATION:** SKC principal Monica Box

tycoon Fergus Wilson and ahead of the transformation of Charter House into apartments. Mr Alderton said compared to other towns Ashford had relatively few flats in the town centre and demographics still showed a need for smaller homes.

The discussion on health included the plans for the £13 million community health care centre in Kings Avenue. The Primary Care Trust said it hoped it would open by June 2011.

Transport issues were covered by Andy Phillips, the council's sustainable transport manager. He talked about future improvements to junctions nine and ten of the M20, the Smartlink and Park and Ride schemes and the future dualling of the Chart Road.

Cllr Peter Goddard complained that rural communities often felt overlooked by the borough's transport plans and that bus services from Stagecoach were not adequate. Mr Phillips said the Smartlink service had to be commercially viable and it would not be extended to rural areas.

The Sustainable Community Strategy was then passed by the council.

## Council faced with a 'challenging decision'

CONTINUED FROM FRONT PAGE  
part of creating a healthier Britain in the run up to the Olympics.

The council wants to introduce the scheme because it fits in with their general policy of encouraging healthy participation in sport in the borough.

Cllr Gerry Clarkson, portfolio holder for cultural services, says the council is faced with a "challenging decision".

The likely outcome of Thursday's meeting is for the over-60s element to be adopted – but not that for youngsters.

Or it could be rejected completely. And with the credit crunch squeezing council budgets, that option could grow in attraction.

While an estimated 80 per cent of local authorities are running with the scheme, many are questioning the figures with Tonbridge and Malling Borough Council already rejecting it because of the financial risks.

yourashford  
**NEWS IN BRIEF**

## Passenger numbers rise for third quarter

EUROSTAR has announced ticket sales figures for the third quarter of the year; and they remain on the up.

It says passenger numbers increased by 6.4 per cent meaning over two million passengers used the service during that period.

Most of the figures are taken before the recent Channel Tunnel fire.

The direct route from Ashford International to Brussels is to be reinstated – but has been delayed due to the recent blaze.

## Confidential advice from sex health clinic

A SEXUAL health clinic has opened in the town.

The free and confidential service is designed to create a one-stop shop for people under-25 who have concerns about their health. It will offer testing services for sexually transmitted diseases, free condoms, emergency contraception and advice.

The new walk-in centre is at the Vicarage Lane clinic and is open on Mondays between 4.15-6.15pm.

For more information about the four new clinics call the sexual health helpline on 01303 228808.

POWERED BY KOS MEDIA

View 100s of our exquisite jewellery at [www.yourkenttv.co.uk](http://www.yourkenttv.co.uk)

Just search for 'exquisite jewellery'

**EJ**  
EXQUISITE JEWELLERY

# Flood of advice due to wet winter fears

## Experts warn homeowners to be on guard

BY ED HILL

A WET winter could spell trouble for many of the town's homes as the risk of flooding increases in the borough.

Some of the town's new housing has been built on floodplains that are the first areas to be submerged if rivers break their banks.

Five waterways converge in Ashford: The Great and East Stour, Ruckinge Dyke, Whitewater Dyke and Aylesford Stream.

Now experts are warning householders to take precautions to guard against the unexpected.

Sean Fury, from the Campaign to Protect Rural England (CPRE), said: "The important thing is how wet the soil already is when you get a heavy amount of rain. These areas have a lot of clay which means water soaks in slowly."

"In 2002, because the ground was already saturated, just an inch of rain caused problems. The houses in the Beaver Road area are the ones at most risk."

Ashford council along with the Environment



Picture PHIL HOUGHTON

**DRENCHED:** River banks could burst if heavy rain delivers another wild and wet winter over the coming months

Agency and Kent Fire and Rescue has launched a campaign to encourage residents to be prepared if the worst happens.

On Saturday they staged a public awareness day at County Square.

Two large maps were put on display in the window of the former Sugar Shack to help locals see if their home is vulnerable. According to the website Homecheck, up to 12 per cent of Ashford homes are at risk.

The Environment Agency has produced a list of things people can do if they think their homes could be affected by floods.

They include; moving valuable possessions and documents upstairs, having sandbags to hand, preparing a flood plan with family and neighbours and phoning its Floodline number.

John Cooper, from the flood incident management team at the Environment Agency, said: "Living in a floodplain is never without risk, so it is vital that residents and businesses have plans in place to minimise the damage and impact which flooding can cause."

"It doesn't cost anything to register to receive flood warnings, but it could make a huge difference in reducing damage to valuables if they are moved to safety."

In future, all new developments around Ashford will have to offset potential flooding problems by water management schemes such as ponds and lakes.

For information about flood warnings in force in your area, call the Environment Agency Floodline on 0845 988 1188.

## £78,000 fine for illegal dump site

THREE people have been convicted of operating a long-running illegal waste site in Nickley Wood, near Shadoxhurst, and hit with heavy fines.

The Environment Agency successfully prosecuted James Penfold, George Penfold and Josephine Pettigrove.

They were fined a combined total of £78,000 and £26,976 costs at Ashford Magistrates' Court for knowingly permitting the deposit and keeping of waste at an illegal site from September 2005 to March 2007.

The court heard that George and James Penfold collected full skips and brought them back to land owned by Josephine Pettigrove.

All three defendants were involved in the running of the skip business. On numerous occasions Environment Agency inspections revealed there was mixed waste, including asbestos, being deposited and kept on the land even after verbal and written warnings.

A spokesperson from the Environment Agency environmental crime team said: "We will use all our powers in order to tackle these unscrupulous operators."

VIEW THIS CLIP ON

yourkenttv.co.uk

your LOCAL TV ONLINE



Memories of the cattle market. Search 'market' and see page 4

## Making a song and dance of this half-term

YOU either love it or you hate it, but you certainly cannot ignore it.

And now next week's half-term holiday is set to see the songs and dance of Disney musical High School Musical 2 come to life at the North School in Essella Road.

Professional theatre company New World Productions will run a special workshop for children aged between five and 18 from Sunday to Wednesday, October 26-29.

It will culminate in a full production of the hit movie-turned-stage-show performed in front of an audience of family and friends.

Producer Gary Telfer said: "High School Musical 2 is probably one of the most popular musicals for children at the moment."

"It seems that many of them already know a lot of the songs and I'm sure they're going to love performing in their own live version."

"All the main lead roles will be cast on the first day of the workshop to make it fair for everybody attending."

The workshop is £50 for all four days and no experience is necessary. For details see www.new-worldworkshops.co.uk.

Spaces are limited and you must pre-book.

## Schoolgirls to get cervical cancer inoculation jabs

BY NICK AMES

AN immunisation programme designed to protect young girls from a virus which can cause cervical cancer will be rolled out across the town as of next month.

Around 8,000 girls across the eastern and coastal Kent area will be immunised against the Human Papilloma Virus (HPV), which can cause the disease, from November 4.

Girls in school Years Eight and 13 will receive the first of three injections between early November and the start of the Christmas holidays.

The second injection has to be administered by mid-January and the third six months later before the summer holidays in July 2009.

NHS Eastern and Coastal Kent is one of dozens of trusts across the country involved in rolling out the government-backed programme.

Teams of community-based nurses are preparing to visit 60 schools in the area while GPs will provide the injections to Year 13 aged girls who have already left school.

Lisa Maidment, school nurse manager, said: "This is one of the biggest programmes we have been involved with for some time."

"It has called for careful planning to ensure we have the correct amount of vaccine and qualified nurses available at the right time."

"It's extremely important for girls to attend school or see their doctor for all three injections. The jabs are staged at different intervals to ensure they bring the maximum protection against the cancer. The vaccine we're using is very safe and protects against the two strains of HPV which cause the majority of cervical cancer cases."

For the academic year beginning in September 2009, the nursing teams will be offering HPV injections to girls in school Years Eight, 12 and 13 and from September 2010 will be immunising girls in Years Eight, 11 and 12.

## Ramada Annual Showcase

SUNDAY FEBRUARY 1st & 8th  
10am to 9pm

Singers, Musicians, Tribute Acts, Bands and Specialty Acts who reside in Kent are welcome to audition.

To obtain an audition time please apply by sending a CV which should include a CD, photos and your '2009 Gig Sheet' to Events Team, Ramada Hotel Dover, Singledge Lane, Whitfield, Dover CT16 3EL

For further information contact the Events team on email: [events@ramadadover.co.uk](mailto:events@ramadadover.co.uk) or Tel: 01304 872841

 RAMADA®  
DOVER  
[www.ramadadover.co.uk](http://www.ramadadover.co.uk)

yourashford  
NEWS IN BRIEF

## Cake and craft stalls part of week-long fundraiser

TENTERDEN Age Concern is holding a week-long event for the elderly.

All this week at the charity's outlet in Church Road there will be cake and craft stalls and competitions.

It is part of a series of fundraising events which launched on Sunday with the national Big Sunday Lunch event.

Carol Beeby, from Age Concern, said: "We will be open every day between 10am and noon to the general public. We hope they will come and enjoy what will be available."

## Youngsters invited on a walk to raise the spirits

CHILDREN who want to know more about the town's ghostly past can take part in this year's Halloween ghost walk.

The event is being organised by Ashford Town Centre Partnership and will be conducted by local historian Trudy Neilson-Kerr. The fun will commence from 6pm on October 31 at the town's library on Church Road. There will be fancy dress and refreshments before setting off at 6.30pm.

To book call 01233 664410, or email info@ashfordtcp.co.uk. Tickets are £2.50.

## Two years on and house plans finally get go-ahead

A SCHEME to build 12 affordable homes at a site on the outskirts of Rolvenden has been given the go-ahead by the council's planning committee.

The approval comes after it was originally rejected two years ago amid concerns it could lead to traffic problems and have an impact on the nearby Moneypenny estate.

But the English Rural Housing Association appealed against the decision and, subject to certain conditions, has now won council backing.

## Coffee morning in aid of those Macmillan 'angels'

A GROUP of young mothers who have recently been touched by cancer in various ways will be holding a coffee morning fundraiser for Macmillan Cancer Support.

The event is being held at the Willesborough Windmill on November 28 between 10am-1pm. There will be craft stalls as well as beauty therapists exhibiting.

Hilda Smith, one of the organisers, said: "The Macmillan nurses are angels in disguise for many people and they do not always get the recognition they deserve."

Son recalls an unsung hero of Elwick Road  
Tales flood in of life at the cattle market

FOR more than 40 years Thomas Wills fulfilled one of the unsung – but perhaps most important – roles at Ashford's old cattle market.

Because Mr Wills was a 'drover' – a man whose responsibility was to shepherd flocks of animals from farms to the Elwick Road marketplace.

And as artist Cathy Streeter continues to embrace the memories of residents as part of an upcoming homage to the key role the Elwick Road site once played in the town – Till The Cows Come Home – Mr Wills' son remembered his father's varied roles.

Gordon Wills, 69, of Arcon Road, told Yourashford: "My father's nickname was Zulu because his dad had fought in that war. No one in the market knew him as Thomas.

"He used to milk the cows and feed the pigs and travel with the lorry drivers up to London.

"At that time there weren't many lorries around. Sometimes he would walk to Maidstone at 2am so he could bring the sheep back by 10am to the market."

BY ED HILL

Mr Wills' main job was bringing the animals from the outskirts of Ashford for local farmers.

His son said: "They knew he was reliable. It was the best way they could get the cattle to market. It was always a very friendly place in those days.

"My dad had an old sheep dog, Bob, that would do anything for him. Once he sent that dog out to Kingsnorth on its own to bring the sheep back. He phoned up the farm and said just leave the gate open and he will do the rest and he did, all on his own, no one helped him."

Mr Wills' son made his first trip to the Elwick Road site when he was just five years old – and was transfixed.

He said: "I used to love seeing all the animals there. It wasn't just the cows and sheep; there were pigeons and ferrets and nanny goats."

His father died in 1976 after a lifetime spent working with the animals at the market.

He said: "I'm glad they are doing something about it. There should be a something permanent as a memory to the market."



MEMORIES: Gordon Wills' (left) father Thomas was a 'drover' for more than 40 years. (Right) Cathy Streeter

Cathy Streeter who is working on the art project said: "The response has been fantastic, I have had loads of memories from all sorts of people. The work has touched a lot of people and they are very willing to share what they remember."

• Share your cattle market memories with us. Contact reporter Ed Hill on 01303 817119.

## VIEW THIS CLIP ON

yourkenttv.co.uk

Your LOCAL TV ONLINE



## Beijing duo share their thoughts

OLYMPIC sensations Lisa Dobriskey and Jamie Staff were the star turns at a glitzy bash at the Ashford International Hotel last week.

And we were there to catch up with our heroes – interviews with both are available for you to view now on our free, broadband TV channel www.yourkenttv.co.uk.

The event was staged to honour the sporting successes of those in the borough – and pay special tribute to the duo who dazzled at the Beijing Games this year.

Commonwealth 1,500m champion Miss Dobriskey – who entertained our readers with an exclusive online blog during the Games –

added: "Ashford has given such a lot to me throughout my career.

"I am really excited to be involved in promoting sport in the town. It will be great to help athletes from the area achieve their dream."

Both are now ambassadors for sport in the town, and will look to inspire the next generation of sporting talent.

And the ceremony in Ashford was just the beginning of a remarkable week for the duo. The following day they headed into central London for the victory parade through the streets.

See them both interviewed on www.yourkenttv.co.uk. Simply search 'Ashford'.

## londa

Whether it's a quick Panini for lunch, or a delicious dinner with family and friends londa bistro and brasserie has it all cooked fresh everyday.

Try our contemporary continental menus for a taste, style and ambience new to Ashford.

Don't fancy a meal? Your more than welcome to come and look around and relax with a freshly ground coffee and a refreshing ice cream.

Call Now 01233 668800

113 Station Road, Ashford, Kent TN23 1PJ  
www.londa.co.uk



**SPECIAL OFFER**  
ON PRODUCTION OF THIS ADVERT  
Buy 2 main meals in the bistro and  
get a bottle of house wine.  
Offer applies to main meals only (Valid until 30th November)

NHS  
Eastern and Coastal Kent

## Your Skills Our Vision

As one of Kent's largest employers, we aim to employ and train a world-class workforce capable of meeting our many challenges. In return for their skills and commitment we offer wide-ranging staff benefits.

**See our ad in the recruitment section to find out more and apply.**

## AutoPlanet

Maidstone  
Your friendly local car superstore

**WHY PAY MORE?**

Choice of over 2,000 used and nearly new cars

- Finance to suit all budgets
- Up to 3 years warranty
- Part exchange welcome

**0845 871 7050**  
www.autoplanet.co.uk  
Maidstone Bircholt Road, Parkwood Estate



DOCTOR'S ORDERS: Ratings of 'fair' and 'good' show the East Kent PCT has made improvements on last year

# NHS trust is showing signs of a recovery

OUR health services are on the up according to the latest assessment.

The NHS Eastern and Coastal Kent Primary Care Trust – which serves 710,000 people and has a budget of just over £1 billion across Ashford, Canterbury, Swale, Dover, Shepway and Thanet – received a 'fair' rating for its quality of services and a 'good' rating for managing its resources.

It compares to last year's findings which rated it 'weak' and 'fair' in the respective categories.

## Dedication

The Healthcare Commission's Annual Health Check assesses and rates each NHS trust in England, looking at a wide range of areas, from the overall quality of care – including safety of patients, cleanliness and waiting times – to how well trusts manage their finances.

Ann Sutton, chief executive, said: "I am delighted to see that all the hard work over the past year has paid off and we have improved in both quality of services and use of resources.

"I would like to personally pay tribute to the dedication and hard work of all PCT staff in achieving these results.

"We will continue to push ourselves to

BY MARIJKE COX

achieve improvements year on year and improve the health of the local people in eastern and coastal Kent."

On the use of resources, David Meikle, director of finance and commissioning, said: "The PCT is now in a strong financial position, which means we will be able to continue to invest more money in frontline services to benefit local people."

Last year, the Eastern and Coastal Kent PCT invested around £1 million into sexual health services, including chlamydia screening and reducing the rates of teenage pregnancy.

Around £3.9m was also invested in the expansion of intermediate care teams over two years, helping to provide care for people in their homes and reduce the number of hospital admissions.

The PCT has been working with KoS Media – publishers of this newspaper and our multi-award-winning sister title Kent on Sunday – for the last few months to raise awareness about the importance of good hand hygiene in the battle against superbugs such as MRSA and C diff.

East Kent Hospitals University NHS Trust achieved all existing national targets and core standards but scored 'fair' for meeting new targets.

## Art for art's sake at gallery's exhibition

TAKE in a bit of culture at the Garret Gallery in Tenterden.

The exhibition EclecticElectric promises a mix of mediums and genres in contemporary and traditional styles. It features the work of South East Open Studios' artists and others, showcasing painting, photography and sculpture.

The gallery, which promises a blend of art and multimedia, stages the exhibition until November 14. Log-on to a preview video on our free broadband TV website www.yourkenttv.co.uk. Search 'eclectic'.

VIEW THIS CLIP ON

yourkenttv.co.uk

Your LOCAL TV ONLINE



## yourashford NEWS IN BRIEF

### Winter Festival will make for vibrant town centre

A MAJOR two-day market will be staged next month in the town centre in what has been dubbed a Winter Festival.

The festival, organised by the Ashford Town Centre Partnership, is designed to coincide with the completion of improvements for the town's hub. It will take place on November 28-29.

Included in the event will be a food, arts and crafts festival.

Traders from Produced in Kent will line up alongside a European market to be staged from the new Elwick Square through Bank Street and into the town centre.

Organisers says space is still available for traders, local artists or craft providers to participate in the event.

Pitch fees will be free for all market traders over the two-day period, but subject to the usual £20 licensing fee. It will run from 9am-5.30pm each day and an entertainment programme is to be confirmed.

To find out more call 01233 664410 or email info@ashfordtcp.co.uk.

### E-fit of attacker released

POLICE have issued a computer-generated image of a man who attacked a woman in Singleton last week.

The 38-year-old victim was walking home along a footpath near Manorfield, on Tithe Barn Lane around 10pm on October 15, after visiting friends. She was approached by a man in his mid-20s who tried to grab her handbag before punching her in the face.



If anyone witnessed the incident they are asked to contact police on 01303 289180 or Crimestoppers on 0800 555 111.

### Maintenance work cause of closure to multi-storey

EDINBURGH Road multi-storey car park in the town centre closed this week for essential maintenance work.

And shoppers and commuters will be restricted in their use of the facility for around six weeks.

It will be completely closed until around November 7, before being partially reopened. The top level, however, will be closed until the end of that month.

All town centre car park season tickets have been reminded their season tickets are also valid in Dover Place and Station Road car parks.



# Retail therapy at its best

- Accessorize • Adams • Barratts Shoes • Bronzone • Butterfly's
- Dolland & Aitchison • Dorothy Perkins • Dr & Herbs • Health Matters
- Hearing Company • KallKwik • KCC Gateway • Learn Direct
- MaRi Novelty's • Millets • Office Angels • Orange • Printing.com
- Thomas Cook • Topshop/Topman • Superdrug • Wilkinson

Park Mall Shopping Centre Ashford T: 01233 630811 www.parkmallshopping.co.uk

WE NOW OFFER  
**A/B/C RATED**  
**ENERGY**  
**SAVING**  
**WINDOWS**



OVER  
**75%**

of our business is from existing customers or recommendations from our existing customers

Testimony to the quality of our service from sale to installation

TOP VEKA INSTALLER IN KENT FOR TWO YEARS RUNNING

ORDERS  
TAKEN NOW  
STILL INSTALLED  
BEFORE CHRISTMAS 2008



FANTASTIC OAK LOOK  
UPVC ARMOURDOOR NOW

**£299\***

Now available in  
many styles and colours  
including black

\*When you spend more than £3,000  
on any of our products

Network VEKA is recommended  
by Steve Davis.

Network VEKA and Steve Davis share  
a passion. Both are world leading frame  
experts that are reliable in the extreme.

- CONSERVATORIES
- WINDOWS
- DOORS
- 10-YEAR PEACE OF MIND GUARANTEE



APPROVED MEMBER

**Network VEKA**  
reliable in the extreme  
Quality windows, doors, conservatories and roofline



ALL NETWORK VEKA  
PRODUCTS COME WITH  
A 10 YEAR GUARANTEE

**elephant.**

To find your local Elephant showroom visit  
[www.elephantwindows.co.uk](http://www.elephantwindows.co.uk)  
**0800 195 0000**

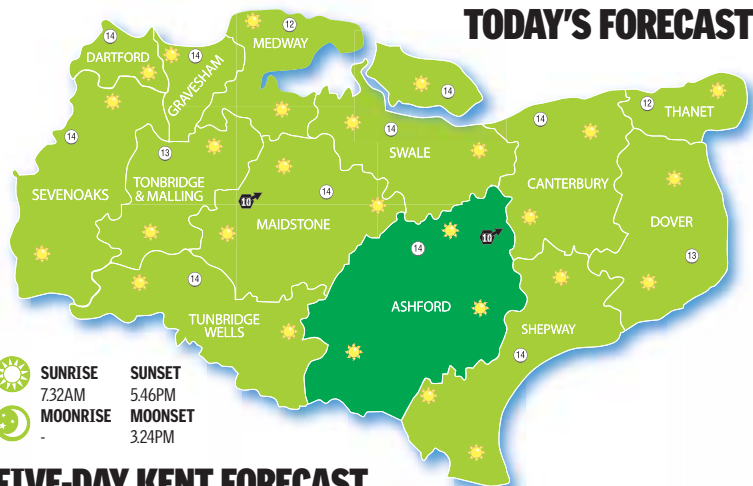
Showroom open: Mon to Fri 9am-5pm, Sat 10am-4pm and Sun 10am-2pm  
Showrooms at: 142 Newington Rd, Ramsgate and Bybrook Barn, Ashford

**PIPER**  
FITS FIRST TIME

# yourweather

WEATHER UPDATES 24 HOURS A DAY @ www.kentnews.co.uk

SPONSORED BY



## TODAY'S FORECAST

## WEEKEND HIGH TIDES

<b>Chatham</b>	Saturday	8:09am	4.9m
	Sunday	9:33am	5.1m
<b>Dover</b>	Saturday	6:58am	5.5m
	Sunday	8:24am	5.7m
<b>Dungeness</b>	Saturday	6:29am	6.1m
	Sunday	7:57am	6.2m
<b>Ramsgate</b>	Saturday	7:28am	4.2m
	Sunday	8:54am	4.3m
<b>Sheerness</b>	Saturday	7:57am	4.8m
	Sunday	9:21am	4.9m
<b>Whitstable</b>	Saturday	7:58am	4.5m
	Sunday	9:30am	4.6m

## AROUND THE WORLD YESTERDAY

Amsterdam	14°C	Madrid	18°C
Athens	23°C	New York	11°C
Barcelona	23°C	Paris	18°C
Beijing	17°C	Rome	22°C
Bombay	35°C	Sydney	19°C
Cape Town	20°C	Tenerife	25°C
Cardiff	14°C	Tokyo	24°C
Gibraltar	21°C	Vancouver	10°C
Hong Kong	31°C	Warsaw	14°C
Las Palmas	24°C	Wellington	13°C

**SUNRISE** 7:32AM  
**MOONRISE** -  
**SUNSET** 5:46PM  
**MOONSET** 3:24PM

## FIVE-DAY KENT FORECAST

	Thur	Fri	Sat	Sun	Mon		Thur	Fri	Sat	Sun	Mon
<b>Ashford</b>	14°C	14°C	15°C	15°C	14°C	<b>Gravesend</b>	13°C	14°C	16°C	16°C	15°C
<b>Canterbury</b>	13°C	13°C	15°C	15°C	14°C	<b>Maidstone</b>	13°C	15°C	15°C	15°C	15°C
<b>Chatham</b>	13°C	13°C	16°C	15°C	14°C	<b>Ramsgate</b>	13°C	13°C	15°C	15°C	14°C
<b>Dartford</b>	13°C	14°C	16°C	16°C	15°C	<b>Rochester</b>	13°C	13°C	16°C	15°C	14°C
<b>Dover</b>	13°C	13°C	14°C	14°C	13°C	<b>Sevenoaks</b>	12°C	13°C	14°C	14°C	12°C
<b>Faversham</b>	13°C	13°C	16°C	15°C	14°C	<b>Sittingbourne</b>	13°C	13°C	16°C	15°C	14°C
<b>Folkestone</b>	13°C	13°C	14°C	14°C	13°C	<b>Tonbridge</b>	13°C	13°C	14°C	15°C	15°C
<b>Gillingham</b>	13°C	13°C	16°C	15°C	14°C	<b>Tun Wells</b>	13°C	13°C	14°C	15°C	15°C

## Dance school in need of volunteer teachers

A MOTHER and daughter team from Willesborough are responsible for creating a successful scheme to create accessible dance classes for children.

Pauline Beer trained as a dance teacher, but believed children – and their parents – were turning their back on classes because they were too expensive.



So with daughter Wendy Richardson (right), the duo began a pilot class in Kingsnorth Primary School.

Teaching freestyle dance after school, the pair were able to keep costs down by using schools as venues while promoting an inclusive form of dance.

Now the formula has proved so successful 22 schools across the county are involved in the Future Dance project – and more dance teachers are required.

Mrs Beer said: "We allow children who may come from less fortunate backgrounds the chance to have fun and gain confidence."

The group is aimed at seven to 11-year-olds, with children taught after school. They are now looking for young volunteers keen to start out in dance teaching. Contact Pauline Beer on 0784 6631912.

## Pond returned to life

SIX months on from being restored and Colts Pond in Bethersden is again teeming with life.

In March this year a team of Environment Agency staff completed improvement works to the popular angling pond. They worked in partnership with Charing and District Angling Club to re-establish sustainable angling.

After finishing vegetation planting on the banks, 250-300 tench were introduced this summer, and a further mix of fish, including chub, rudd and bream, will be joining them soon.

# CARPET FACTORY OUTLET

## WHERE CARPETS REALLY DO COST LESS

UP TO **50% OFF**

FITTING & DELIVERY AVAILABLE

ALL STOCKED  
CARPETS & VINYL  
REMNANTS

## AYRSHIRE TWIST

In 12 Superb Modern Neutral colours.  
80% wool, 20% Polypropylene. 45 ounce  
RRP £22.99 sq mt  
Factory Outlet Price £16.99 sq mt

## WHOLE HOUSE DISCOUNTS!!

**Whole House Natural Effect**  
Up to 100m<sup>2</sup>, 100% Polypropylene,  
Stain Resistant, including Underlay,  
Grips, Fitting & Doorbars  
Was Price £1250  
NOW ONLY £1099

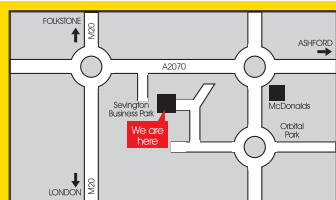
**Whole House Stain Resistant Twist**  
Up to 100m<sup>2</sup>, 8 Superb Colours, Including  
Underlay, Grips, Fitting & Doorbars  
Was Price £1250  
NOW ONLY £1050

**Whole House Loop Pile on Felt Back**  
Up to 100m<sup>2</sup>, 4 Colours, Heavy  
Domestic, Including Fitting & Doorbars  
Was Price £700  
NOW ONLY £630

OR With  
Underlay & Grips  
Was Price £1100  
NOW ONLY £1000

## SHOP AT HOME SERVICE

Buy flooring from the comfort of your own home.  
We come to you with a selection of samples for you  
to choose from. It is that easy with no obligation!  
Just pick up the phone and we will do the rest...  
CALL 01233 501280



Unit 7 Ashford Trade Centre, Hall Avenue, Orbital Park  
**ASHFORD 01233 501280**  
Mon-Fri 9:00am-6:00pm Sat 9am-6:00pm Sun 10.00-4.00pm

Ample FREE parking

**WWW.CARPETS4LESS.EU**



# yourlocalinterview

## QUESTION & ANSWER

### SALLY STARLEY



**Q** How long have you lived in Ashford?

**A** I have lived here all my life. I was born near Dover and moved here when I was one. I think Ashford is a great town and it is getting better all the time. It has changed beyond recognition. I do worry that it might be getting too big, but on the other hand if young people move in then they may well need to use my shop.

**Q** Why did you open the shop?

**A** I have five children and when I was a new mum I could not find anywhere that sold these sorts of things. I had to go to other places such as Canterbury, so I knew there was a demand in the town for it. We just started in a small way and it grew from there. Our first shop was in South Ashford, then we were in County Square and we have been on this site for 20 years.

**Q** How has it been over those years?

**A** When we first started it was an instant hit. We have had our ups and downs over the years. It was difficult when the old market first closed. We know our customers very well and that is why they keep coming back. We know all the family; we have women whose own mums first brought their pram here coming back to buy a pram for their first child. It's a family tradition. My customers know all about me and ask

after my children. It is like an extended family.

**Q** How has the business changed?

**A** The number of goods available has massively increased. We have a lot more stock than we used to. The amount of choice is enormous compared to what it used to be. We do stuff for babies as small as a pound in weight up to the age of two, including christening wear. I think we are good for the town because our trade does come from all over Kent, Sussex, Essex and Surrey and while they are here they go to the town as well. We are the oldest baby shop in the South East that has been run by the same owner.

**Q** Do you think that concentrating on such a specific area has been a good policy over the years?

**A** Yes it has. We have had to change with the times but people know that we give them a complete service. We listen to our customers but we are very traditional when it comes to clothes. We stock the classic colours and materials. I would not have things like denim. We feel that babies should look like babies; there is a tendency to make babies grow up too fast.

**Q** Are you more optimistic now the work to Bank Street has been finished?

**A** Yes, I think it is fantastic. It is much better than before, we now have our own loading bay. Now the buses are back I

would say we are as busy as we were before. We have had a tough time while the extension to County Square was being built. It has been three years since that first started. One week our business was down by 95 per cent but now business is back with a vengeance. I think the town needed the changes even though I admit I was not sure they had got it right at first, but now it is done I think they have done an amazing job.

**Q** Do you think that businesses like yours have had enough support?

**A** I think there are things they could do to help the small independent shops because each one of us is unique and there are not many of us left. I don't just mean the councils – the public need to get behind us as well. I think for us to have survived 30 years has been pretty good going. I do think that having the Debenhams has made a difference, because even if it does not attract people from outside of Ashford at least it means that people in the town do not have to go anywhere else to buy those sort of things.

**Q** What else do you do?

**A** Our last son has just left home. All of my children have been very sporty. They have all played hockey for Ashford and one of them played in goal for England for a while. So we have spent lots of time following them around.

QA

Baby accessory shop Tiny Tots celebrates 30 years of trading in Ashford this year. Ed Hill spoke to Sally Starley about the Bank Street store, its success and how it has changed with the times

# MID SEASON SALE NOW ON

Over 20,000 Square ft. Of Beautiful Furnishings At Prices You Can Afford



## COMO

Generous proportions make this contemporary range extremely comfortable. Select a colour from our exclusive leather collection.

Large Sofa **Usual Price**  
**£1249**  
**SALE PRICE**  
**£899**

Other items available at **Sale Prices**

**UPHOLSTERY CLEARANCE -**  
**MANY ITEMS AVAILABLE**  
**UP TO 1/2 PRICE**  
**IN STORE**  
**NOW**

## RELYON

Royal Sunningdale  
Supreme

Over 2000 pocketed springs covered in fine quality natural fillings in this no-turn mattress. A sprung base with drawers compliment this bed.

150cm  
**Usual Price**  
**£2799**

**SALE PRICE**  
**£1299**  
**LESS THAN HALF**  
**PRICE**



# NASONS



Nasons Furniture, Carpet and Bed Centre, Maynard Road, Wincheap Estate, Canterbury, CT1 3RQ.  
01227 463550 Open Mon - Sat 9am - 5.30pm Sun 10am - 4pm [www.nasons.co.uk](http://www.nasons.co.uk)

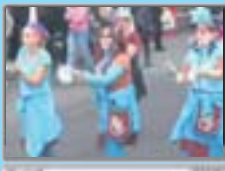




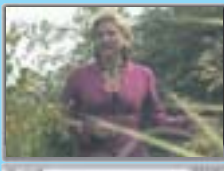
Warmer temperatures in the Channel are resulting in more seahorses off our coast. Search 'seahorse'



Olympic golden boy Jamie Staff is honoured by the sporting community of his home town. Search 'jamie'



Hundreds joined Canterbury Festival's opening parade to Dane John Gardens. Search 'parade'



Julie Maddocks looks at the work of Demelza, which provides hospice care for children. Search 'demelza'



KosMedia's Tom Betts adds his contribution to the Far West exhibition in Margate. Search 'far west'

EDITOR'S CHOICE

You can view all these videos and others from around the county with the click of a mouse at...

[yourkenttv.co.uk](http://yourkenttv.co.uk)

# Which county has the coast with the most?

BY NICK AMES

DOES Kent have the longest coastline of any county in Britain?

Our county council says that, at 350 miles, Kent can lay claim to the title, but others – including the Environment Agency – aren't so sure.

The Government body, using maps and satellite images, says the honour should go to Cornwall with its total of 435 miles.

The West Country county itself, however, is more conservative. The Visit Cornwall tourist board says the figure is about 350 miles – "give or take a few".

But this does not include the Isles of Scilly, which the Environment Agency calculation does.

Cambridge University has added to the controversy by coming out in favour of Kent. Its academics do not count all the small river estuaries in Cornwall which contribute to its large total.

An Environment Agency spokesman said: "We give Cornwall a figure of 435 miles because this includes the lower parts of the estuaries which make up local rivers."

"Also the Isles of Scilly are taken into account. Kent has large water courses as well, such as the Medway, and these should obviously be taken into account."

"Really it is a matter of interpretation."



LONGSHORE DRIFT: Kent has about 350 miles of coastline... with enough variety to float anyone's boat

KCC later said its publicity material should have qualified its claim and stated that the coastline was "one of the longest".

However, staff at County Hall said the 'fact' had also appeared on various websites.

A Visit Cornwall official contested the Environment Agency's high figure.

"We would never say that, that's too much," she said.

"For our purposes we don't include the Isles of Scilly. They may be part of Cornwall technically, but they look after their own interests."

"We'd say about 350 miles or so – can't we call it a draw?"

## Either way, it's shore to be a fantastic week

SATURDAY sees the start of Kent Coastal Week, which will set out to emphasise the seaside's natural attractions.

Sea safaris will start out from Ramsgate harbour, a sand sculpture event takes place in Broadstairs and a beach litter art day is being held at the Kent Wildlife Trust's base at Tyland Barn, near Maidstone.

These are just some of the 50 events going on

which have been timed to coincide with schools' half-term week.

Boat trips will include visits to the historic Second World War forts off Herne Bay and seal-spotting, as well as revealing details of the shoreline from out to sea.

Those taking part will also have the opportunity to learn about bird life, geology and collect shells. The county's 350 miles of coastline

includes some of the most varied shorelines in the UK. Cllr Keith Ferrin, KCC's cabinet member for the environment, said: "Kent's coast has so much to offer, from Dover's mighty white cliffs to low-lying marshes."

"Everyone should take the opportunity to enjoy what they like best on the Kent coast."

The event runs until the following Saturday. Visit [www.kent.gov.uk/explorekent](http://www.kent.gov.uk/explorekent) for details.



FAIR TRADE: Dr Caroline Lucas MEP

## Magazine award for Green MEP and party leader

GREEN Euro MP Dr Caroline Lucas has received an accolade for her work on trade issues in the European Parliament.

The newly-elected party leader for England and Wales was chosen by fellow members to receive the Parliament magazine award for MEP of the Year 2008 from a shortlist drawn up by non-governmental organisations, many of which take part in aid work.

In recent years she has campaigned to reform the European Union's Economic Partnership Agreements, aiming to stop the sale of timber from illegal logging and deforestation, and calling for a ban on the importation of seal products.

Dr Lucas has also been critical of the Global Europe trading strategy, which she feels promotes an anti-developmental approach in trying to force open markets in some of the poorest countries.

She was elected to the European Parliament as one of the Green Party's first MEPs in June 1999 to represent the south-east of England.

She was re-elected in 2004.

The next European elections take place in June 2009.



Thursday 13th November 2008

3pm – 8pm

All our campuses will be open to welcome you in: Ashford • Dover • Folkestone

Contact us to find out which campus to visit for your chosen subject.

Especially for 15-18 year-olds, but everybody is welcome.

# Open Day

[www.southkent.ac.uk](http://www.southkent.ac.uk)

Call: 0845 207 8220

Email: [courseinformation@southkent.ac.uk](mailto:courseinformation@southkent.ac.uk)

# Dover . Halloween . Calais

Be brave and take the kids to Disneyland® Resort Paris for the most unique Halloween Festival ever. Meet your favourite Disney Characters and naughty Disney villains in Halloweenland where pumpkin pranksters rule!

But there's nothing scary about our great inclusive deals on fares and Disney park tickets, so click and treat the family to a festival of fun and spooky moments.

**seafrance.com/kos**

0 8 7 1 7 0 2 1 8 0 6

Quote promotional code: YOURDIS



© Disney

Book and pay by 31 October for return travel by 7 November 2008. Disneyland Resort Paris tickets valid from 4 October - 7 November 2008. Park entry is subject to capacity. 1 day hopper tickets are for 2 parks and are non exchangeable, non refundable and subject to availability. Collect tickets at SeaFrance check-in. Tickets can only be purchased in conjunction with ferry travel with SeaFrance Dover - Calais Ferries. Full terms and conditions available on request. Disney's Halloween Festival runs from 4 October - 2 November 2008.

# Open University slammed over leak of exam paper

BY SIMON ROBINSON

OPEN University bosses have launched an internal investigation after students were handed their exam paper three weeks before sitting the three-hour test.

The blunder came to light after thousands of undergraduates nationwide had sat the environment exam on Friday, October 10.

On Monday exam board chairman Dr Nigel Clark issued an unreserved apology to those affected and insisted that retakes would not be necessary.

Student Erica Jones, 28, from Rochester, said she could not understand how the OU had made such a basic mistake.

She said: "That such an established and well-respected institution could make such a stupid mistake made me feel that all my hard work was null and void."

"If the OU's going to give out the exam paper as a revision guide it makes me feel like my

qualification won't even be worth the paper it's written on.

"I enjoyed the course, but am now reconsidering continuing my studies with the OU until I hear the matter has been resolved in a way that's fair to those of us not involved and the students given the exam paper."

"I'd also like to know how the tutor involved will be reprimanded. Surely they can't be trusted to continue teaching at degree level?"

The exam paper was handed to students at a revision seminar in September, giving these learners three weeks to compose their answers or share their insider knowledge with peers from across the UK.

OU bosses admitted the "breach of security" on the course's web forum within hours of the end of the test.

Head of examinations and assessment Jennifer Bull wrote: "The number of students who had direct access to the questions is known to be very small.



LET DOWN: Erica Jones is hoping she will not have to resit her exam

"That any students had prior access leads to a risk that the questions will have been communicated more widely.

"This risk is thought to be low but of course the impact potential is high."

Students were forced to wait for an agonising fortnight to hear if they would have to resit the exam.

Dr Clark finally confirmed that this would not be necessary on Monday morning.

Writing on the course's web forum, he wrote: "The course team understands that the uncertainty surrounding this incident is the last thing you need after the demands of revision and examination, and we are very sorry for any distress this has caused. "It's up to us to learn from this mistake and to make sure it doesn't happen again."

"The exam will not have to be retaken and firm measures are being taken to ensure that no student marks will be prejudiced by this incident."

## Ex-drug addict's turning point

FORMER drug user Jo Dillane has turned her life around by using her past experiences to help others - and has just won the national City and Guilds Skills for Justice Prize.

She works for charity Turning Point and is seconded to Kent Police working on its Drug Intervention Programme.

Ms Dillane, from Folkestone, has used her own first-hand knowledge to assist her in her work as it allows her a degree of understanding the problems users face.

"I have got past experience with drugs," she said. "That finished the day I finished my programme of treatment for addiction. I am not judgemental, a lot of the work I do with clients is about their safety. I have been there

and it means I have empathy with them."

Ms Dillane's job entails visiting custody, visiting prisoners, asking about their concerns and helping them to accept treatment if they say they have an alcohol or drug problem.

She works with a north Kent drugs team based in Gravesend which target around 25 prolific offenders who break the law to feed their habits after intensive study at South Kent College.

Ms Dillane said: "A lot of the work is about building relationships with the police and clients. When they realise I can help them, I get a lot done working alongside other organisations to make the transition into treatment seamless and provide intensive support.



UNDERSTANDING: Jo Dillane during a prison visit

"I left school when I was 13 and never finished anything in my life. When I won the national award, I was shocked - I didn't even know I was entered for it."

## High-speed trains to boost homes market

THE introduction of high-speed rail services between Kent and London next year could help spark a revival of house sales in Kent.

House-builders are hopeful shorter journey times to the capital will prompt more commuters to buy properties near train routes.

But estate agents are less enthusiastic about the effects the Channel Tunnel rail link, High Speed 1, will have on house sales in the county, saying it will not solve the many problems the market faces.

Edward Church, a partner at Strutt and Parker, said potential buyers would soon realise the downsides of the service.

He said: "It's more likely to have an impact between now and its arrival late next year, because once it has arrived it will probably be more expensive than the trains are already."

"And while the trains will be quicker, they don't go to the same areas of London so it's not as if it's a replacement for what already exists."

"People might discover the service is not quite as exciting as first thought."

Earlier this year a bullet train recorded a journey time of just 32 minutes from Ashford to London.

The Hitachi locomotive was on a test run between the International Station and St Pancras in the capital when it clocked in the time - five minutes less than operator Southeastern predicted for the passenger service that starts in December, 2009.

The journey was part of a proving process introduced by the rail company to examine the efficiency of the new High Speed 1 line.

Piers Clanford, managing director of Berkeley Homes (Kent), said interest in the firm's Maidstone and Canterbury developments was gathering momentum in anticipation of the service.

He added: "It's clear it will elevate places like Canterbury and Snodland, but with the service 18 months away now is the time to invest in a new home in these areas."

Despite Mr Clanford's optimism, others are not so sure the high-speed link will make that much of a difference.

Simon Miller, of Maidstone-based Simon Miller Estate Agents, said while the service will increase the appeal of the county, it was "premature" to suggest it will lead to a boom in house sales.

He added: "The rail link is probably the last thing on most people's minds because the market is so depressed."



For information and advice on travelling in Kent and for all our traffic regulation orders, please see the Saturday Observer or the Kent on Sunday or visit our website at [www.kent.gov.uk/highways](http://www.kent.gov.uk/highways)

**Curves strengthens women.**

Curves is sponsoring World Breast Awareness Month in October 2008. So come on down & visit us.

Come for a **FREE** Fitness Assessment & receive a **FREE** breast self-exam kit.\*

**Curves**  
The power to assess yourself!

Over 30-minute circuit works your body like no other work out can, with a mix of cardio and strength training you can burn up to 500 calories, so help us help you become the woman you have always wanted to be.

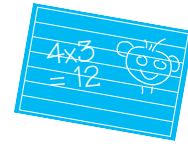
**CALL GINA HAWKINS NOW ON 01233 627299**  
DRUM LANE, ASHFORD, KENT TN23 1LQ [WWW.CURVES.COM](http://WWW.CURVES.COM)  
EMAIL: [CURVESOFASHFORD@BTCONNECT.COM](mailto:CURVESOFASHFORD@BTCONNECT.COM)

## online TV as it happens

### Watch the latest web TV sport news and action [kentnews.co.uk](http://kentnews.co.uk)

FOOTBALL • CRICKET • RUGBY • TENNIS • BOXING • ATHLETICS • GOLF • HORSE RACING • SNOOKER • MOTORSPORT • CYCLING

# yourashfordschools



**STATE-OF-THE-ART:** The Goldwyn Community Special School in Great Chart is for special needs children from all over Kent

## Special needs children get a helping hand

DIGNITARIES from across the borough descended on Great Chart last week to mark the official opening ceremony for Ashford's latest school.

The Goldwyn Community Special School is a secondary school for special needs students with severe emotional and behavioural difficulties. Drawing students from across the county, most arrive with a long history of difficulties in mainstream schools.

Many have been excluded and lack motivation and self-esteem.

The school provides a full programme of GCSEs, personalised learning and intensive emotional and behavioural support.

It was officially opened by KCC cabinet member Mark Dance and its chair of governors Tim O'Connor.

Students of all ages put on a performance of music, singing and video in front of an audience of more than 150 parents, students, and dignitaries.

Headteacher Bob Law said: "The school is the first of its type in the whole of southern England. We have seen such enormous pride shown by the students for their new state-of-

■ BY ED HILL

the-art building and are delighted they have something that really demonstrates the value that Kent places on them and their education."

In January, Goldwyn staff and pupils moved from the old school building into their new purpose-built facilities. Over the past six months the old school has been demolished and new landscaping created in the grounds.

The school's new buildings include a recording studio, design and technology suite, science lab, art studio and classrooms equipped with ICT hardware.

The school is built around a large sports hall which provides space for daily assemblies, drama productions, concerts and sport.

The school also has a motor vehicle workshop which was completed last month. The facility provides opportunities for vocational learning to take place acting as a stepping stone to diplomas in further education.

MP Damian Green, who was at the ceremony, said: "This is a fantastic facility. There is a massive amount of new technology in the building. I think it's good it has been built because in the current economic climate it is going to be harder to build new schools."

doVER calais

this is my **P&O**  
I can look forward to leaving it all behind me

any duration  
web fare from

£27\*

each way  
car and up to 9 people

P&O Ferries

P&Oferries.com  
08716 64 64 64  
Or see your travel agent

### BREAK TIME



### Musical ensemble show their talent

THE Brake Hall at Ashford School resounded to the sound of music recently at its Music Scholars' Concert.

Eighteen of the school's talented music students and senior musicians entertained the audience of parents and students who attended.

The concert is an annual event held at the school to showcase its students' musical talents. With performances from students as young as 11, the evening showed its strength and depth in music.

Zachery Eiseman on oboe and the doubly-talented Matthew Cooper (trumpet and vocals) proved the musical future at Ashford School looks bright.

At the other end of the age range, Year

11 saxophonist Alex Browne blasted out a version of Gerry Rafferty's Baker Street.

Sixth formers Katrina Peng, Erica Xiao and head of keyboard studies, Stephen Dandridge, brought the evening to a sparkling close with a performance of Mozart's Sonata for two pianos.

• GODINTON Primary School will soon be launching its shoebox appeal in aid of poor children in other parts of the world.

This will be the third year the children have taken part in the scheme.

The school will be sending out leaflets to parents telling them the chosen charity for this year's appeal.

SEND your schools news and pictures to [yourashford@kosmedia.co.uk](mailto:yourashford@kosmedia.co.uk). You can also upload your own video clips of schools events on to [www.yourkenttv.co.uk](http://www.yourkenttv.co.uk)

# yourashfordblogger



Each week we get a mystery writer to air their views on living in the district of Ashford...

## Custom-built to drive the rest of us car-azy

AS ANYONE who has been to an open-air car park recently will know, the curse of the boy racer is still with us.

The car park's surface is covered in ugly black tyre marks where the chavs have been practising their doughnuts (a slur on a sugary treat if ever there was one) and their hand-brake turns.

The boy racer is not a new phenomenon, but what strikes me as crazy is the fact that they can pimp their rides with all manner of noise-making antisocial items.

Thumping boom-boxes, exhaust systems that make their Vauxhall Corsa sound like a space shuttle taking off and lighting underneath the car that makes it look like a levitating tin of Quality Street.

Surely it is not beyond the powers of government to ban these things? No doubt enthusiasts will say this would unfairly punish innocent customisers who always drive responsibly, but they have to be in the minority.

The whole point of these things is to get on people's nerves. They are designed to be antisocial. The drivers add the accessories as a badge of pride and delight in keeping the rest of us awake at night.

I live in a quiet close, populated by generally elderly residents. I admit I fit in. I have comfy slippers, a pipe and a bag of nuts to give to small children, who don't know I have already sucked the chocolate off them.

I like it. It is (or at least was) amazingly quiet. I used to live in London on a bus route. I have the tinnitus to prove it. To have genuine silence is a rare thing. But this has been ruined since two girls moved into the flat next door. It is bad enough having to listen to their music all day, but the worst aspect is their neanderthal boyfriends; one with a gleaming alloy-wheeled Lexus and the other with his bright yellow jelly-mould Seat.

They have decided, with their mates, that 2am is the ideal time to recreate the Indianapolis 500. There is nothing wrong with a customised car, but there is something wrong with ruining other people's lives. I know

this sounds like an old geezer's moan, but there is a serious side. Those elderly neighbours of mine are not just put out by the actions of these twerps and their noise, they are intimidated and scared by them.

What I don't understand is why people want to act this way. I would hate to feel that through my actions I would really upset a stranger (forget friends and family, I am always getting on their nerves).

If people do want to pimp up something, why can't it be something quiet? How about tricycles with fins, Zimmer frames with jacked-up chrome shocks, and comfy sofas in gleaming metallic-finish leather?

The other thing that gets on my nerves is how this guy can afford a Lexus, let alone all the attachments. I admit it, I'm jealous. Serves me right for buying a grandad's Rover with its plastic walnut interior and a travel blanket to put over my legs when it gets cold.

**EDITOR'S NOTE:** All bloggers are supplied with full name and address of the authors. They do not reflect the view of the newspaper but are designed to give our readers the chance to air their views.

### GET IN TOUCH...

We want to hear your views



**EMAIL:** Letters, comments, views (along with your name) to: [yourashford@kosmedia.co.uk](mailto:yourashford@kosmedia.co.uk)



**TEXT:** **ASH** then your message to: 81800 (please remember to include your name)

### LET US KNOW...

If there is a story in your area you think we should be covering contact the editor, **Chris Britcher**, on 01303 817171 or email him on the details above. If you want to be the next Ashford blogger then all you have to do is submit an article to us (of around 550 words) and email it to the editor.

And don't forget, for all the latest news and video from your town log-on to [www.yourashford.co.uk](http://www.yourashford.co.uk).

Write to The Editor, YourAshford, KoS Media, Apple Barn, Hythe Road, Smeeth, Ashford, Kent TN25 6SR.

\* We cannot guarantee all articles will be published and all are at the editor's discretion



## Challenge the professionals...

WASH YOUR HANDS!

It is everyone's responsibility to stay clean.



Working with you to reduce infection



## SALE NOW ON!

Furniture with real value...



The Furniture Warehouse  
styling your home

# HOME VISIT CARPETS



THE CARPET  
STORE THAT  
COMES TO  
YOUR DOOR

## 10 GOOD REASONS TO BUY FROM US

- 1 FREE Local Delivery
- 2 FREE Measuring Service
- 3 ALL Fitting Work Guarantee
- 4 Underlay at only at £4 per sq metre
- 5 Hessian backed carpets from only £4 per sq metre
- 6 Huge range of carpets in different styles & Colours
- 7 Friendly local service
- 8 Shop from home
- 9 Hard to beat price!
- 10 25 Years Experience



SHOP AT  
**HOME  
SERVICE**  
7 DAYS A WEEK  
8AM - 9PM

### SENIOR CITIZEN SPECIAL!!

- OLD CARPETS UP LIFTED
  - FURNITURE MOVED
  - 10% DISCOUNT!!
- ON PRODUCTION OF THE AD -  
VALID UNTIL 30/09/08



Save **£££'s** ON Whole house deals .....It's Carpet buying made easy  
No Job Too Small - Honest & Fair Pricing all year round

CALL TODAY FOR HASSLE FREE SERVICE - IT'S THAT EASY  
**01223 611887 • 07939 070191**



**All Prices  
Crunched £££s!**

Registered Office: Romulus Gardens Ashford, Kent, TN23 3PX

EXCLUSIVE TO KOS MEDIA READERS

With  
**FREE**  
Accessories  
(worth £115)

## Kärcher Pressure Washer Kit

Only  
**£99.99**  
inc p&p (RRP £215)



Kärcher's best ever value pressure washer kit includes free accessories worth £115 - total RRP for the items in the kit is £215!

Fully mobile, it will enable you to effortlessly solve difficult outdoor cleaning jobs without backbreaking scrubbing or expensive and corrosive chemicals. With 100bar peak pressure and a 1.4kW Motor, it produces a high-pressure jet that will instantly dislodge the most stubborn dirt. Featuring Auto Start/Stop, it comes with a high Pressure Spray Lance, 4m high-pressure hose and Trigger gun plus the free accessories below:

- T-Racer Patio Cleaner for rapidly removing stubborn ground-in dirt, moss and algae from large areas of tiles, paving, decking, paths and driveways
- Dirtblaster Lance - 50% more power for the most stubborn dirt
- Extra Large Wash Brush for cleaning cars, caravans, windows and garden furniture
- Cleaning Tablets that make 5 Litres of Universal Cleaning Detergent

To order this product (code 7575) visit  
[www.yourkenttv.co.uk/readeroffers/12845](http://www.yourkenttv.co.uk/readeroffers/12845)

or call **0845 165 1004**

Quote KOS101



British Heart  
Foundation

- SUITES
- COFFEE TABLES
- BEDS, BEDROOM FURNITURE
- TVs, DVDs, HI-FIs
- WASHING MACHINES, FRIDGES, DISHWASHERS

# WANTED

## Furniture & electrical items

Please donate any good quality items to help raise funds to fight heart disease, the UK's biggest killer.

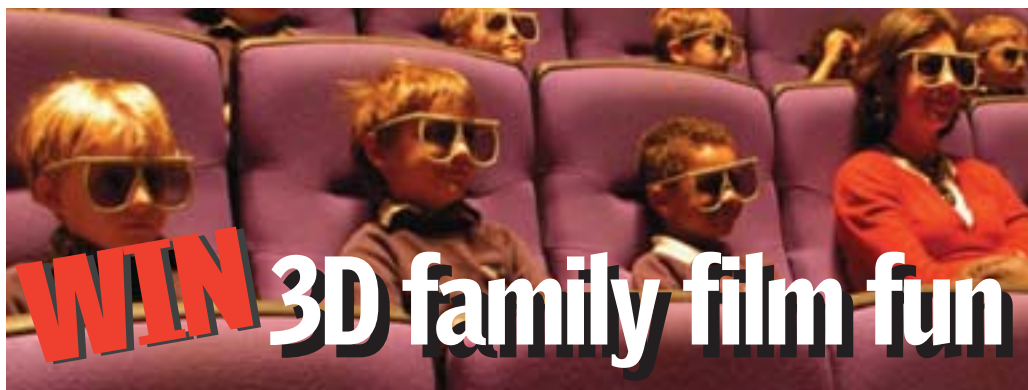
To discuss and arrange a **FREE** collection call:

**0844 499 4146**

64-66 Castle Street Dover CT16 1PA

Opening Times: Monday-Saturday 9.30am-5.00pm

# yourcompetition



THE Science Museum has launched into the stars with a new IMAX space film.

Fly Me to the Moon 3D is the first-ever computer animated film designed, created and produced exclusively in 3D, and we've got five family tickets to give away.

Featuring the voices of Christopher Lloyd, Tim Curry and Nicolette Sheridan, Fly Me to the Moon 3D is the exciting tale of brave young housefly Nat and his two best friends, Scooter and IQ, who sneak on board the Apollo 11 spaceship to embark on a cosmic adventure. The film also features an appearance by Buzz Aldrin himself.

Young viewers will be introduced to space exploration and the moment the

## sciencemuseum

world was united to observe man land on the moon. Fly Me to the Moon 3D creates a truly immersive experience that pulls the audience in and encourages questions about the universe.

Winners will also have the opportunity to defy their senses and step aboard a rollercoaster ride in space on the Science Museum's motionride simulator or marvel at rockets, satellites, probes and landers in the incredible Exploring Space gallery.

To enter, simply answer the question below and send your entry on a postcard along with your e-mail address (if applicable), name, address, and daytime telephone number to Moon competition, KOS Media, Apple Barn,

Smeeth, Ashford, Kent, TN25 6SR. The closing date is October 29, 2008.

**Question: Name a voice that features in the Fly me to the Moon 3D film.**

No purchase necessary. For our full terms and conditions see [www.kentnews.co.uk](http://www.kentnews.co.uk) or call 01303 817073. If you do not wish to receive any literature please write 'no literature' on your entry.

The voucher entitles free admission up to a maximum of four persons for the IMAX 3D Cinema and the space simulator at the Science Museum, London. The voucher may not be used in conjunction with any other offer or against family combination or discounted tickets. Only one voucher per transaction, the voucher is non-transferable, non-exchangeable, and there is no cash alternative. Prize is valid until December 31, 2008.

The Science Museum reserves the right to refuse entry. Children under 12 must be accompanied by an adult. Admission is subject to availability and individual attraction restrictions.

This voucher does not provide preferential rights over any other visitor to the Science Museum.



Unforgettable Festivities

Book Now

Party Nights - Join in the party

## Wye Suites and Bybrook Barn Restaurant

### A Winter Wonderland Themed Event

Join one of our organised Party Nights and you get to enjoy the party without the planning. Our team handles all the arrangements - all you have to do is turn up. So whether you're partying with colleagues, friends or family, everyone's guaranteed a fun-filled, stress-free night.

**Call: 0870 400900**

**Holiday Inn Ashford Central**

Canterbury Road, Ashford, Kent TN24 [www.holiday-inn.com](http://www.holiday-inn.com)



# your letters



**LETTERS:** Please send your letters in to us at Yourashford, Apple Barn, Smeeth, Ashford, Kent TN25 6SR

**TEXT:** Why not text your view/letter/comment for Yourashford to 81800 text ASH followed by a space your name and your view/letter/comment. Messages cost 25p plus standard network charges. Service provided by g8wave London N7.

**EMAIL:** Email us your letters to us at yourashford@kosmedia.co.uk

## TALK TIME

### SIMON AND MATT HALL

Hairdressing brothers Simon and Matt Hall discuss their popular salon in Faversham Road, Kennington they named after themselves.



#### What's the history of the shop?

**SIMON:** My father opened the business up nearly 30 years ago. He moved from Faversham. At that time he saw Ashford had potential to grow and fortunately this shop came up around that time.

The business has changed a lot since then. We now employ 19 people. I think the most important thing in business is the service you give. People will travel a long way if you can provide that and these days you have to be the best you can. Personally, I think the future of many businesses is out of town.

Away from work I spend a lot of time following my children and their sport. Two of them play rugby for Ashford and one is currently playing with Gillingham's youth team which means a lot of travelling.

#### What's it like working with your brother?

**MATT:** We have been together for 16 years. It is good to work with someone you trust and get on with, especially over that length of time.

The good thing about hairdressing is that it is constantly changing and never stays stagnant. You have to change with it and look to the future.

You have constant feedback from your customers and it is nice to make them feel happy once you have finished.

Sometimes you know that as they go out the door you have made them feel much better about themselves. It's like doing makeovers every day.

We have stayed open late for a long time now. People's lives have changed so much. There are so few nine-to-five jobs around these days.

## YOUR LETTERS

### Property bulk sale will not flood market



### Wilson's have got sums all wrong

If the Wilsons had thought about this they would not have announced they are selling in a falling market.

The housing market in Ashford has been distorted by the mass purchase of houses.

Now the sell-off will do the same thing.

A fund will expect to pay a heavily discounted price in the current market for a non-diversified portfolio.

I for one will not be attending any courses run by the Wilsons on finances!

David Barker  
Comments left on  
[www.yourashford.co.uk](http://www.yourashford.co.uk)

### Artistic tones are just what's needed

Congratulations Yourashford for writing about the work of Oliver Winconek without the usual sarcastic tone so many others apply when referring to modern artists.



## COMMENT ONLINE TOO

Not only can you use email and letters to respond to our stories, don't forget you can comment via our website too.

Beneath most stories on the [www.yourashford.co.uk](http://www.yourashford.co.uk) website there is the facility to leave your comments on whatever YOU thought of the online article.

To leave your remarks, simply click on the 'Add your comments' link and tell us what you think. And remember, [www.yourashford.co.uk](http://www.yourashford.co.uk) is updated daily, bringing you the latest, breaking news from across Ashford and Tenterden as well as our villages.

We will include the best on these pages too - ensuring your comments reach the widest possible audience.

In addition, if you find your newsagent, supermarket or petrol station runs out of Yourashford before you've picked up your copy, you never need to miss out.

On [www.yourashford.co.uk](http://www.yourashford.co.uk) you can access, for free, the full newspaper in our highly-acclaimed e-editions.

It is wonderful for a town such as ours to have an artist of such quality working here and I echo his comments for a permanent dedicated gallery to be set up in

the near future. Just imagine what we could achieve from our artists if one existed.

G Taylor  
By email



### Picture perfect in these gloomy time

It was very interesting to read of the rise of Oliver Winconek's reputation outside of Ashford.

While I am no art expert, I have found some of the stir his public works have created in the town has created headlines for all the right reasons and been a glorious distraction from the normal doom and gloom. Keep it up Oliver - and let's have some more of those elephants.

Jane Ames  
Kennington

### A question of art

How does a picture of a woman holding a gun to the head of a robot make anyone proclaim its creator as talented? Whatever happened to nice landscapes?

Ian Bridger  
By email

### Troublemakers are still the root cause

So a police car is torched in Stanhope and the residents will be up in arms about it will they? I'd be surprised.



**UK STONE IMPORTS**  
Granite, Sandstone, Limestone, Slate, Marble

**Compare our prices you won't find better**

Visit our website to view our extensive range of products  
[www.ukstoneimports.com](http://www.ukstoneimports.com)



**Natural Stone Paving, Patio and Landscaping Products**

Here at UK Stone Imports we supply to both the private and commercial market places. If you are a homeowner or a business owner our sales staff can guide you through selecting the right material for your requirements. We can advise you on any project you may be undertaking or planning as we have many years experience in hard landscaping.

We import and deliver some of the world's finest stone at competitive rates. We supply sandstone, limestone, granite, setts and slate along with a variety of outdoor living items.

Contact us today for more information  
**01227 713832**  
email us at [enquiries@ukstoneimports.com](mailto:enquiries@ukstoneimports.com)

UK Stone Imports Limited - Stone Court, Stone Way, Lutonville Business Park, Twickenham, Kent, CT2 3JF

**Beautiful rooms with wonderful views...**



**...and excellent shortbreak offers**

Prices from £59 delightful double room for two with Full English Breakfast included - quote KOS Media Offer

**THORLEY TAVERNS**  
HOTELS

<p><b>The Fayre Ness Hotel</b></p> <p>Marine Drive Kingsgate</p> <p>Tel: 01843 868641 <a href="http://www.fayre Ness.co.uk">www.fayre Ness.co.uk</a></p>	<p><b>The Oak Bay Hotel</b></p> <p>66 Harbour Parade Ramsgate</p> <p>Tel: 01843 583686 <a href="http://www.oakhotel.co.uk">www.oakhotel.co.uk</a></p>	<p><b>The Pegwell Bay Hotel</b></p> <p>81 Pegwell Road Pegwell Village, Ramsgate</p> <p>Tel: 01843 599590 <a href="http://www.pegwellbayhotel.co.uk">www.pegwellbayhotel.co.uk</a></p>
--------------------------------------------------------------------------------------------------------------------------------------------------------------	-----------------------------------------------------------------------------------------------------------------------------------------------------------	--------------------------------------------------------------------------------------------------------------------------------------------------------------------------------------------



The buildings may have changed, but it's still the same troublemakers living there.

H Hunter  
By email

## Community fighting to make change for better

What a shame there has been trouble on Stanhope given all the work going on there.

However, how refreshing to see the community unite to condemn the attack and assure the wider public it is not an occurrence which will happen again.

Things are changing on that estate and it would be a crying shame if the actions of a minority spoiled its reputation before it has been given a real chance to recover.

Yvonne Greaves  
Ashford

## Phew! Our cash didn't go to Iceland

COUNCIL chiefs have moved to allay fears of losses due to the current financial collapse - and the threat to money stashed in Icelandic accounts.

Kent County Council confirmed it had £50 million in Icelandic banks - while the likes of Canterbury had £6m.

Ashford council, however, has confirmed it had made no investment in Icelandic accounts.

Deputy chief executive Paul Naylor said: "Ashford council has no investment with Icelandic banks and we would like to reassure our residents that there will be no impact on the services we provide."

"The council will continue to seek advice from our treasury management adviser about investment opportunities and

## A saving grace, but let's not get too carried away

Not often Ashford council gets praised for its foresight, but hats off to it for not having pumped our cash into Icelandic accounts in pursuit of a few bob of extra interest (Phew! Our cash didn't go to Iceland, Yourashford, October 15).

However, I do hope it has ensured our financial experts on the council are looking very closely at where our taxpayers' money has been invested to ensure there is no possibility we could be left exposed to such an extent.

I just keep my fingers crossed now that the £50 million loss suffered by Kent County Council is not felt by us next time the council tax bills are being calculated.

Mrs H Knox  
Kingsnorth

## Credit crunch makes donations more precious

I am writing on behalf of Sue Ryder Care to appeal to local people to continue to support the charity by donating unwanted items to our shops.

We urgently need donations of items including ladies clothes, men's clothes, items of bric and brac and children's toys.

It's early days as to how the credit crunch may affect us yet it has to be taken into account that when people are not buying new items, after a while donations of unwanted items may drop too.

So, I'd like to appeal to everybody who may be having a clear out at home, please don't throw items away, but donate to us.

And, while doing so, if you Gift Aid your

donations, with a simple signature, we can reclaim an extra 28 per cent of the value of the items from the taxman.

By supporting Sue Ryder Care in this way, local people can help us make a real difference to the lives of thousands of people.

All money raised from the sale of donated items goes directly to help Sue Ryder Care provide expert and compassionate care to people living with conditions including cancer, Huntington's disease, multiple sclerosis and stroke. Thank you - your support is always appreciated.

Samantha Leahy  
Business manager for Kent, Sue Ryder Care

## Stub out the ban to give publicans a chance

Now would be a very good time for the Government to review the smoking ban which has caused so much damage to the licensed retail trade of this country.

I read that Shepherd Neame had seen a drop in profits and surely this can be attributed to the current financial crisis.

But the ban will also be making a difference as people who used to enjoy a cigarette with their pint will no longer

so keen on going.

If the Government wants to attract more spending in pubs and so give a better chance to landlords of keeping their businesses afloat then maybe it should be up to licencees whether smoking is allowed.

Naturally it could be kept away from eating areas and places that serve just food.

But a bar set aside for smokers would see a lot of people coming back to the pubs they have abandoned - bringing in a bit of a feelgood factor as well.

This is surely what we need in trying times  
Alan Davies  
By email



# ALLBITS

HUGE Discounts at East Kent's Largest BATHROOM Showroom

Call us now on 01797 363623 for more GREAT bathroom offers or visit our showroom...

FREE Local Delivery - FREE Parking  
Friendly Service - Trader Counter  
Massive Showroom

**T  
W  
Y  
F  
O  
R  
D  
S**

**Pivot Doors**

760mm £171  
800mm £179  
900mm £194

6mm Glass Lifetime Guarantee

**Sliding Doors**

1000mm £245  
1200mm £261

Latest Geo-6 Range

from Flexair

**P-Shaped Shower Bath**

**£269**

1500mm or 1700mm in Left or Right Hand  
Includes Shower Screen and Panel

from Flexair

**Mario Novella Freestanding Oval Bath**

**£349**

1800mm  
Includes S&T

**WINDSOR VANITY UNITS**

FREE BASIN MIXER!

from **£139**

**Aqualisa Electric Showers**

**AQUALISA**

30% Off Aqualisa Electric Showers

8.5kW

**£125**

Shop Online at [www.allbitsupplies.co.uk](http://www.allbitsupplies.co.uk)

**ALLBITS Tropical Eden Shower Enclosure**

Polished Chrome Finish  
6mm Safety Glass  
Silky Smooth Opening Action  
Solid Chrome Handles  
Low Profile Stone Tray  
800 and 900mm Available

**£299**  
**£199**  
October only!

**Salus Control Pack**

**£59.99**

Includes 2 Channel Programmer, 2 Port Motorised Valve, Cylinder Thermostat, Room Thermostat and Wiring Cables.

**Walk in Bath with Door and Whirlpool**

**AGORISTYLE BATHROOMS LTD**

Supported and Fitted From

CALL 0843 18861-87718 (9am-5pm)  
For Further Details

**£2999**

**Radiator Specials**

S	600h x 400w	£13.50
I	600h x 600w	£19.83
J	600h x 800w	£26.21
K	600h x 1000w	£32.58
L	600h x 1200	£38.46
T	600h x 1400w	£44.27
C	600h x 1600w	£50.21

D	600h x 400w	£25.34
O	600h x 600w	£37.13
U	600h x 800w	£50.57
H	600h x 1000w	£62.37
B	600h x 1200	£75.34
I	600h x 1400w	£87.73
C	600h x 1600w	£99.81

**Saniflo Macerators**

SaniFlo - £249  
SaniTop - £319  
SaniPro - £349  
SaniPlus - £389



ALLBITS Plumbing Supplies - Unit 10, Cinque Ports Road, Mountfield Industrial Estate  
New Romney, Kent, TN288LH

ALL Prices include VAT at 17.5%





# yourlocal health & beauty guide

Advertise your venue on in the next guide and yourkenttv.co.uk -  
the Kent local search directory - Telephone: 01303 817110

## Fashionable store has grand designs

### ■ Vida

THIS is a shop for the discerning customer who wants designer accessories and clothing items at a very reasonable price.

Opened by Margaret Bracewell in the Merham-le-Hatch Business Village along Hythe Road near Ashford in November 2007, the store is already attracting a loyal number of frequent buyers, as well as being a stop for someone looking for something out of the ordinary.

The shop sells designer handbags, shoes and boots - although the glass footwear in the window is for decoration only.

Gloves, belts and jewellery boxes all made of leather are another speciality and, as an independent retailer, Margaret can give informed and individual advice for each customer.

Customer service is the key to what makes Vida a class store and all staff pride



themselves on product knowledge.

The beautiful and historic area which includes other top range businesses and restaurants just adds to the ambience.

Margaret said: "All the designer handbags sell very well - particularly the Italian company Ripani and the London company Bill Bag. I am always searching for new companies and products and have recently become

a stockist for Marta Ponti - a company that designs lovely useable leather bags at very competitive prices. I also stock Cheet bags which are beautifully made.

"For autumn I have a new range of belts in and warm scarves will be arriving soon.

"Looking to Christmas a new range of gorgeous jewellery boxes in rich colours will be arriving. So come and enjoy."

## All's Well that ends with no surgery

### ■ Wells Clinic

THE Wells Clinic in New Street, Ashford has been running for 17 years, helping people to achieve their full potential in terms of their looks.

"We are about making people feel good about themselves - making people happier," said Helen Huggins.

She explains that there is far more to looking and feeling good than simply how you look in one area: "Our business is about our clients feeling confident and giving themselves more assurance."

With that comes a range of exciting new ideas and procedures that completely bypass any need for surgery - one of the biggest concerns for many people.

The Wells Clinic ensures that it can offer the very latest advances in non-invasive cosmetic surgery.

Helen added: "Wrinkle fillers and Botox injections can take years off your face. You can become more confident, look younger and achieve a more positive outlook."

A lot of the business is word of mouth, and celebrity clients have also used the expertise of staff at Wells - but the centre is discreet and won't be naming names.

A simple consultation can take you through all the procedures available and skilled staff can advise on the best procedures based on individual needs. Get in touch to find how it can help you.



Love the way you look. Join Curves

JOIN NOW REST OF SUMMER FREE!

Curves 30-Minute circuit works every major muscles group two muscles at a time. You can burn up to 500 calories every workout, so you'll look and feel better this summer and long after

01233 627299  
www.curves.com

Drum Lane, Ashford, Kent TN23 1LQ  
Email: curvesofashford@btconnect.com

Katagon  
Drugs

OCTOBER OFFER

25% OFF  
Full Body Massage

Was £35.00  
Now 26.25

Tues - Sat 9.30 - 5.00pm  
7 High St, Hythe, Kent Tel: 01303 260840

To advertise  
in this section  
telephone  
01303 817150

New  
AUTUMN/WINTER  
COLLECTION  
Has Arrived!

30% OFF ON SELECTED  
HANDBAGS & SHOES!

Vida

Merham-le-Hatch Business Park  
Hythe Road, Ashford, Kent TN25 5NH  
Just off A20, Junction 10 Between Ashford and Sellingdale  
Tel 01233 500605 www.vida-uk.com

TOP TIPS

**Curves, Drum Lane**

Swap raw tomatoes for ones cooked slowly with olive oil - the cooking process releases more of the cancer busting antioxidant lycopene. Studies show that heating tomatoes with olive oil makes it easier for the body to absorb the nutrients.

**Vida**

For autumn and winter the mock-croc and snakeskin look is still very strong for bags and shoes. Leather manufacturers can now produce some rich, sumptuous effects and colours, and the bags are stunning!

**Wells Clinic**

Eyes by Smooth Light takes 20 minutes and is good for tired eyes. It tightens the upper eyelid, reduces hooding and the brow area is tightened to reveal the eyelid so brighter eyes. It also reduces under-eye bags and softens fine lines and crows feet.

**Dive in!**  
10 days for £10

VILLAGE health & fitness has so much to offer, and now we're offering you **10 days for £10** so you can experience all our fantastic facilities.

**Call 01622 656944 for more details**

VILLAGE Maidstone, Castle View, Forstal Road, Sandling, Maidstone

at VILLAGE Maidstone

**Beauty Reborn**  
Amazing Results at Amazing Value

**NEW RADIAGE:**  
Lifts & tightens face, neck, stomach & arms. Leaving skin feeling smooth & refreshed.

**Muscle relaxing injections (Botox):**  
1 area £180 - 2 areas £230 - 3 areas £250

**Wrinkle Fillers:**  
Restylane: Half syringe £150  
Full syringe £250  
Juvederm: Full syringe £250

**Smoothlight:**  
Tightens and smooths lines on the eyes and face was £199 now £100

**TITAN**  
"Face lift without surgery" Skin tightening and contouring treatment

Also available painless removal of skin tags, moles and skin tags. Offers only available with this advert.

**Free Consultation**  
Why not call us today to arrange a free, no obligation consultation?

"I couldn't have been happier with the service and results I got from my treatments here. I am now a regular visitor to the clinic and would recommend it highly to others." C. Thompson, London

9 New Street • Ashford • Kent • TN24 8TN t: 01233 661662 e: info@wellsclinic.com www.wellsclinic.com

## Perfect gift for Christmas

**X-Mas Club starts from £10 only**

We also do repairs

### Ashford Cycle Centre

119 Ellingham Industrial Centre, Ashford, TN23 6LZ

Closed Wednesdays • Rear of Rocky's Cafe

**01233 639558**

Also at Stone Street, Cranbrook, Kent TN17 3HB

[www.ashfordcycles.co.uk](http://www.ashfordcycles.co.uk)

Try somewhere new today,  
we're crunching prices

**1/2 price** cut and blow on first visit from £12

See pavement sign for offer of the day.

*Angels*  
Hair & Beauty

33 New Rents, Ashford, Kent TN23 1JJ

**01233 611044**

### KOS MEDIA READER OFFER

## Luxury Feather Mattress Toppers

Experience the natural comfort, warmth and luxury of a traditional feather mattress with these innovative Mattress Toppers.



Deep filled to three inches with super-soft duck feathers, they fit over your mattress to give you extra comfort without reducing essential support.

**1617 Single** 99x190cm **£39.99** (RRP £89.99)

**1618 Double** 135x190cm **£49.99** (RRP £109.99)

**1619 Kingsize** 150x200cm **£59.99** (RRP £129.99)



To order this product visit

[www.yourkenttv.co.uk/readeroffers/12846](http://www.yourkenttv.co.uk/readeroffers/12846)

or call **0845 165 1004**

Quote KOS

# yourashfordleisure



**NAKED TRUTH:** Calendar Girls tells the true story of a group of Women's Institute members who carried out a brave stunt to raise cash for charity

# Girls play on originality

## Ladies bare all as they bring true story to the stage

THE true story of middle-aged women who stripped off in the name of charity is brought to the stage next month.

Calendar Girls is based on the real-life exploits of a group of Women's Institute members who posed nude for a fund-raising calendar. The heart-warming tale inspired an award-winning film and now the stage version, with a stellar cast including Lynda Bellingham and Patricia Hodge, is heading for Canterbury.

All the shows quickly sold out but, due to huge demand, the cast has agreed to put on an extra performance at 2.30pm on Wednesday, November 5. Patricia Hodge, who last visited the Marlowe in April while starring in *The Clean House*, is a big fan of Canterbury and reportedly jumped at the chance to stage another performance there.

At the time of writing, tickets for the extra performance were selling

### CALENDAR GIRLS

Monday to Saturday, November 3-8  
Marlowe Theatre, Canterbury

fast but some were still available, so contact the box office as soon as possible to secure your seat. The cast also features Elaine C Smith, Gaynor Faye and Brigit Forsythe.

When Annie's husband dies from leukaemia, her friend Chris decides to buy a comfortable sofa for the hospital waiting area. Her fund-raising idea – a calendar which shows her friends posing nude while carrying out daily chores, such as baking, with their private areas discreetly obscured – initially meets with scorn from the group. But they gradually come around to the idea, much to the dismay of their WI leader who refuses to sanction the project.

When they finally get permission to go ahead, the calendar becomes a runaway success and the ordinary women from Yorkshire find themselves becoming international celebrities. A trip to America and

appearances on high profile chat shows do wonders for their cause, but also reveal the tensions starting to build within the group.

The real-life Calendar Girls released the 2000 Alternate WI Calendar in 1999 and it sold out within the first week. Another print run immediately sold out as well and within nine months of its launch, 88,000 copies had been sold. An updated version became a hit in America the following year, resulting in more than 200,000 further sales, and to date the group has raised well over £1 million for Leukaemia Research.

They have continued to support the charity by selling their own range of merchandise including calendars, jams, chocolates and greetings cards. Their daring project inspired many copy cat calendars by other organisations, but the WI ladies remain the original Calendar Girls.

Tickets are priced from £12 to £26. To book call 01227 787787 or see [www.marlowetheatre.com](http://www.marlowetheatre.com).

FOR MORE THEATRE AND ENTERTAINMENT VISIT @ [yourkenttv.co.uk](http://yourkenttv.co.uk)

with  
**JANE CONNOLLY**  
Email jane.connolly@kosmedia.co.uk



**LeisureTV** SPONSORED BY [seafrance.com](http://seafrance.com)

**JOE BROWN**

Friday, October 24  
Leas Cliff Hall, Folkestone



ONE of this country's most enduring and acclaimed musicians Joe Brown invites fans to help him celebrate 50 years in the business.

Having entertained music fans for half a century, Brown is touring with a new two-hour show to mark his achievement.

Along with his long-serving band, daughter Sam and son Pete, Brown will perform the great songs in a diverse array of genres which have given him such popularity and longevity.

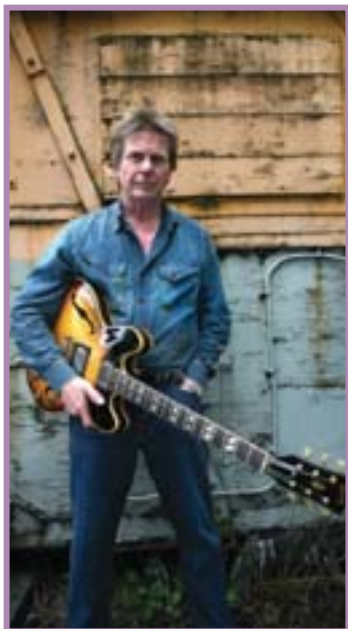
From rockabilly, country and electric rock 'n' roll to folk and gospel, the songs are linked by Brown's unique style and humour.

After beginning his career as a live performer, Brown became a recording star in the 60s.

His skiffle band, originally called The Spacemen, was renamed Joe Brown and The Bruvvers. Since then his career has included roles in films, pantomimes and stage musicals as well as presenting jobs on television.

Sam Brown is a singer who scored a huge hit with *Stop!* in 1989. Newest band member Pete is a record producer.

The concert starts at 7.30pm, tickets cost £21/£19. To book call 0870 4000890.



Picture: JUDY TOTTEN

**MAGIC FACTORY**

Saturday, October 25  
The Hop Farm, Paddock Wood



WAVE your wand and step into a world of illusion when The Hop Farm opens England's first Magic Factory this weekend.

Be among the first to learn the secrets of some of the most baffling tricks when the attraction opens its doors on Saturday. Master the mystical art of levitation, find out how heads can float and discover the trick to the disappearing act along with lots of other fascinating techniques.

As proof of their new skills,



visitors can also learn how to take photographs to convince their friends they are now a master of magic.

There will be plenty of puzzles, optical illusions and tricks to be solved and even a few surprise visits from the mysterious Merlin to keep visitors on their toes.

The opening of the Magic Factory is part of a week of spooky fun as The Hop Farm also celebrates Halloween. The Chamber of Horrors Torture Cellar Live is sure to give some chills to people aged over 10, while there will be plenty of creepy sing-alongs in the Big Top.

To book visit the website at [www.thehopfarm.co.uk](http://www.thehopfarm.co.uk).

**GHOST FEST**

Monday to Saturday,  
October 27 to November 1  
Canterbury Tales, Canterbury



THOSE who are brave enough are invited to hunt for ghosts in the Canterbury Tales' spine-tingling Ghost Fest.

Now in its third year, the six-day festival has even more on offer for those interested in the paranormal. Located in the former parish church of St Margaret's, the attraction is believed to be haunted and provides the perfect spot for ghost hunting in the company of Mark Turner from Ghost Finders Scotland and spooky specialists Fright Nights. From a single experiment to an overnight Halloween vigil, there are a number of different events to choose from.

Visitors can take part in an Electronic Voice Phenomenon experiment (£15) or join award-winning ghost tour guide John Hippisley for a spooky tour of Canterbury (£7 for adults, £5 for children). Search for ghosts inside The Canterbury Tales (£30) or see a variety of psy-



chic and paranormal skills in action (£30).

Overnight events will be held on the Friday and Saturday, both priced at £45.

The events are suitable for over-18s only and places are limited. For full details visit [www.ghostfest.co.uk](http://www.ghostfest.co.uk) or to book call 08702 411414.

**ASHFORD LEISURE**

**Let your interest take flight at RSPB lecture**

FIND out more about Kent's ecology in an RSPB talk called Homes for Wildlife.

The charity's public relations manager Andre Farrar will be talking about Kent's rich diversity of wildlife, with an emphasis on birds. The talk will be held at Godmersham Church at 7.30pm on Friday.

Tickets cost £7.50. To book call Tim George on 01227 730527.

**Family day out promises to be hauntingly fun**

GET on track for some spooky fun at the Kent and East Sussex Railway during half term.

From Monday to next Friday, visitors will be able to enjoy not only exciting train rides but also an interactive theatre show by Wendy the Witch. Children will have the chance to get up close and personal with a snake, owl, bat or spider or watch Mr Mystery work his magic.

With a pumpkin carving workshop and a 'what's in the gunge' game, there should be plenty to keep the family entertained. For more details visit [www.kesr.org.uk](http://www.kesr.org.uk) or call 01580 765155.

**Band aim to Sabotage all your favourite hits**

HEAR classic pop, punk, indie and rock hits played live when Sabotage performs in Ashford.

The five-piece band plays covers of songs by a variety of artists such as Foo Fighters, Kings of Leon, Tom Petty and the Sex Pistols. Find out more about them at [www.sabotagetheband.uni.cc](http://www.sabotagetheband.uni.cc).

Sabotage will be at the George Hotel in High Street on Friday. For more information about the venue call the pub on 01233 625512.

**Tell our readers about your planned production**

WOULD you like to see your production or event publicised on these pages?

Send full details - including dates, times, ticket prices and how to book - to [jane.connolly@kosmedia.co.uk](mailto:jane.connolly@kosmedia.co.uk) or by post to the address on page 2. Submissions should arrive at least two weeks before the preferred date of publication.

If possible, include a good photograph to illustrate your event. We cannot guarantee coverage, but we will do our best to promote local events.

**VIEW THIS CLIP ON**  
[yourkenttv.co.uk](http://yourkenttv.co.uk)

**Your LOCAL TV ONLINE**



Join in the fun of the Canterbury Festival. See the leisure channel

**SAVE MONEY ON GAS & ELECTRICITY**

The energyhelpline can tell you who offers the best deal and they can even organise the switch for you.



It's a **FREE** and impartial service, so call or go online today to see how much you can save.

With savings of up to **£365** possible in minutes, what have you got to lose?

Call **0800 074 0745** or visit [www.kos.energyhelpline.com](http://www.kos.energyhelpline.com)



*Award Winning Food from an Award Winning Chef*

**Nigel and Bridget Morris** formerly of the Dove Inn, Dargate welcomes faces old and new to

**The Ivy House TYLER HILL**

Why not call in for lunch, an evening meal or just a drink. We'll be happy to see you

Lunch served 12-2 Tues-Sun  
Dinner served 6.30-8.30 Tues-Sat

**LIVE MUSIC**

Sunday 23rd November, 5pm  
**Blues Bandits**

**THE IVY HOUSE**  
Hackington Road, Tyler Hill  
Nr Canterbury  
**01227 472200**

**An evening meal out or a pub lunch?**

Pick up next Wednesday's **yourashford** and take a look at our **yourlocal eating out guide**

[www.yourashford.co.uk](http://www.yourashford.co.uk)  
POWERED BY KOS MEDIA

**Kent**  
Highway  
Services



For information and advice on travelling in Kent and for all our traffic regulation orders, please see the Saturday Observer or the Kent on Sunday or visit our website at [www.kent.gov.uk/highways](http://www.kent.gov.uk/highways)

**Upload and share your videos**

[yourkenttv.co.uk](http://yourkenttv.co.uk)



**Kent's local community website**

- Property TV • Motors TV
- Leisure TV • Business TV
- Sports TV



Award Winning Company

Community TV sponsored by P&O Ferries

# yourashfordstyle



**ACCESSORIZE**  
Baker boy hat, price £18



Keep on trend with autumn's hottest colour

# Fiery fashion



**DUNE**  
Cegrade peep toe platforms, price £65



**DEBENHAMS**  
Pierce Florida Flamenco dress, price £150



**HOUSE OF FRASER**  
Shoulder tote bag, price £139



To search for shopping, services, leisure and entertainment log on @  
**yourkenttv.co.uk**



**MATALAN**  
Trench coat,  
price £45



**DEBENHAMS**  
Betty Jackson cowl  
neck dress,  
price £55



**PRIMARK**  
Worker boots, price £15

### ASHFORD SHOPPING

#### Book in for The White Tiger that won gold

FIND out what all the fuss is about by snapping up a copy of this year's Man Booker Prize winner.

Waterstone's in County Square will be showcasing The White Tiger by Aravind Adiga after it won the top literary gong last week.

The White Tiger saw its author become only the third debut novelist to win the title after it was selected by a panel of judges, chaired by former government minister Michael Portillo.

#### Get your second annual free from stationers

MAKE a saving on the perennially popular range of children's annuals ahead of the Christmas rush at WHSmith.

The high street store is running a special buy-one-get-one-free on a wide range of the books. They include the latest offerings from classic comics the Beano and The Dandy as well as more contemporary books from top films such as High School Musical and Star Wars.

There are also annuals for the biggest football clubs and TV shows. For details see in-store or [www.whsmith.co.uk](http://www.whsmith.co.uk).

#### Snatch up a Swatch of your favourite villain

AS the release of the new 007 film approaches, Bond villains have been immortalised by watchmakers Swatch.

The company has 22 new watches, each based on a different Bond nemesis. The range offers a variety of designs, from the heavy gold-coated timepiece after Oddjob (£120) to a white watch inspired by Blofeld's cat (£32.50), everyone's favourite villain is honoured.

Buy at Swatch stores in Canterbury and Tunbridge Wells or online at [www.swatch.com](http://www.swatch.com).

#### Snap up some great art when you mail order

A NEW art company has been launched to make art accessible to everyone.

Claiming some people find art shops intimidating, the people behind Mail Order Art have made a variety of works available online. From wall art sculpture to original art and prints, there are more than 5,000 pieces in an array of subjects.

Prices range from £11.99 to over £500. Orders should arrive within 10 days and delivery costs start at £4.99, with free delivery for orders over £200. To find out more see [www.mailorderart.co.uk](http://www.mailorderart.co.uk).

#### Sprinkle a little natural colour into your baking

ASDA has become the first supermarket to launch its own all-natural baking range and a microscopic blue-green algae is the star.

Spirulina has been around for millions of years and is now considered to be one of the world's best superfoods. Renowned for its nutritional properties, the freshwater algae has been used to create bottles of blue food colouring.

The range is entirely free of artificial colours and flavours. Prices start from 52p for colouring and 60p for sprinkle decorations.

### Now is the time to do your decking!



Call **01227 738838** or Visit our website  
[www.eastkenttimber.co.uk](http://www.eastkenttimber.co.uk)



**35% OFF**

*This Autumn*  
live Beautifully.

#### 'Corina'

Hand crafted by Wade Upholstery with coil sprung seat units, reversible cushions, available in a choice of sofa sizes and chair offered in this featured 6 star exclusive fabric.

e.g. large three seat sofa with scatters.

AEP £2235 **NOW £1439**

25-34 Roper Road · Canterbury  
01227 766655 [www.lenleys.co.uk](http://www.lenleys.co.uk)

Monday - Saturday 9am - 5.30pm  
Sunday 10.30am - 4.30pm



FURNITURE · BEDS · CURTAINS · FLOORING · ACCESSORIES

### yourlocal health & beauty guide classifieds

#### ALTERNATIVE THERAPY

**Wells Clinic** 01233 661662  
9 New Street, Ashford  
[www.wellsclinic.com](http://www.wellsclinic.com)

#### HAIRDRESSING

**Dyson Brown** 01233 626003  
29-31 Tufton Street, Ashford  
[www.dysonbrown.co.uk](http://www.dysonbrown.co.uk)

#### HEALTH, FITNESS

**Curves** 01233 627299  
Drum Lane, Ashford  
[www.curves.com](http://www.curves.com)

#### RETAIL

**Vida Handbags** 01233 500605  
Mersham-le-Hatch Business Park, Hythe Road, Ashford

#### SLIMMING

**Think Trim 'N' Slim** 020 8432 9427  
1 Rippon Gardens, Chessington, Surrey  
[www.ashford.thinkslimtrim.org](http://www.ashford.thinkslimtrim.org)

Search for more directory listings at  
[www.yourashford.co.uk](http://www.yourashford.co.uk)

POWERED BY KOS MEDIA

# yourashfordtimeout

## YOUR TV REVIEW

**LITTLE BRITAIN USA**  
BBC One, 9.30pm, Friday

BY TOM BETTS

AM I the only person in the country who doesn't find Little Britain funny?

Sometimes it really does feel that way.

It's a bit like not being invited to a party that everyone talks about at work the next day, you have to hover around feeling awkward as everyone gushes about how good it was while you keep schtum.

It's not that I don't think it doesn't have the odd amusing moment or two, or that it's embarrassing to watch, it just never really makes me chuckle, which has to be a pretty big failing for what a helluva lot of people seem to rate as our finest comedy.

There seems to be a whole clutch of shows that everyone seems to go ape over that just pass me by.

Along with The Catherine Tate Show and Gavin and Stacey, which also seem to have capture everyone's imagination but my own, the whole joke seems lost on me.

Episodes seem more like a series of reasonably amusing observations, held together by a raft of catchphrases and repeated mannerisms, rather than side-splitting sketches.

"Computer says no"; "I'm a lady"; "Yeah, I know" and "I'm the only gay in the village" have now joined Tate's "Am I bovvered?" in the national consciousness, for better or worse, but I'd happily take Harry Enfield and Paul Whitehouse's current offering – surprisingly good – over any of the above.

Little Britain is certainly the main offender though and now it's being beamed into the homes of our erstwhile friends Stateside.



**OFF-KEY:** Walliams (left) and Lucas have taken their comic creations Stateside in the new show

While I concur that Lucas and Walliams are a funny couple of chaps – appearances on other shows prove that – has Little Britain really got the legs to make it over the other side of the pond?

Pay network HBO seemed to think so and have signed up the comics for a series or two to see if they can crack the land of plenty – and no doubt make them a few dollars into the process.

Johnny Depp is said to be a fan, but let's not take his judgement too seriously – he only turned up on the Fast Show when it had become staler than a month-old French stick.

All this aside though, I wish the boys well.

If they can make the American's laugh – never an easy task – then good luck to them.

## YOUR WEEK'S HOROSCOPE

BY RUSSELL GRANT



**AQUARIUS** (Jan 21-Feb 19)  
YOU will get the respect and recognition you deserve at work. A reward or promotion lets you know you're on the right track. Getting involved with a humanitarian effort will also be a real pleasure. It's great to see other people share your concern for the planet.

• To find out more about what the stars have in store call Russell on **Aquarius** 09067-531762



**TAURUS** (Apr 21-May 21)  
YOU could form a business partnership with a close female friend. Romance could make its way into your life. You're drawn to an adventurer and you'll feel relaxed, susceptible and sexy when they are around. It's nice to have a physical outlet for all of your pent up emotion.

• To find out more about what the stars have in store call Russell on **Taurus** 09067-531753



**LEO** (Jul 24-Aug 23)  
YOU'LL have more time for fun this week which comes as a welcome relief. You've been devoting lots of energy to acting sensibly and responsibly so take this opportunity to enjoy yourself. Good news regarding an inheritance or refund puts some worries to rest.

• To find out more about what the stars have in store call Russell on **Leo** 09067-531756



**SCORPIO** (Oct 24-Nov 22)  
BUSINESS matters related to art, music, or luxury items could pay off handsomely. If you've ever been interested in becoming a collector, you may want to make your first purchase this week. You could find an entry level specimen at an excellent price.

• To find out more about what the stars have in store call Russell on **Scorpio** 09067-531759



**PISCES** (Feb 20-Mar 20)  
AN event, reception or gathering could put you in contact with several influential people so be sure to look your best. Your distinctive style draws lots of favourable attention and may lead to an artistic opportunity, but you would be wise to know when to speak and when to stay silent.

• To find out more about what the stars have in store call Russell on **Pisces** 09067-531763



**GEMINI** (May 22-Jun 22)  
IT'S easy to attract romantic attention. People are drawn to your wit and intelligence. If you're in a relationship, be tender toward your partner. You may want to take your amour's advice with regard to a project. If the two of you are thinking of having a baby, go for it.

• To find out more about what the stars have in store call Russell on **Gemini** 09067-531754



**VIRGO** (Aug 24-Sep 23)  
A FAMILY gathering will be a lot more fun than you think. It's fun enjoying food, wine, and music with the people who know you best. A relative could give you a cherished family heirloom. Keep this precious object where you can enjoy and appreciate it.

• To find out more about what the stars have in store call Russell on **Virgo** 09067-531757



**SAGITTARIUS** (Nov 23-Dec 21)  
YOUR animal magnetism is at an all-time high. If you've been harbouring a crush on somebody make your move now and you won't be disappointed. If you're already in a relationship, this is a good time to ask a favour from your other half and melt their resolve.

• To find out more about what the stars have in store call Russell on **Sagittarius** 09067-531760



**ARIES** (Mar 21-Apr 20)  
IF you're in a relationship the two of you could benefit from a little intellectual stimulation. Becoming more resourceful with your money will strengthen your bond. Learn to rely on each other for entertainment, rather than buying lots of expensive gadgets.

• To find out more about what the stars have in store call Russell on **Aries** 09067-531752



**CANCER** (Jun 23-Jul 23)  
PAYING more attention to your appearance isn't shallow. It's a means to feel more comfortable. People will respond to you more favourably when you look your best. It will also be easier to get your ideas across. If you're looking for work, invest in a good interview suit.

• To find out more about what the stars have in store call Russell on **Cancer** 09067-531755



**LIBRA** (Sep 24-Oct 23)  
YOU'VE got to be diplomatic with someone close to your heart. Offering the unvarnished truth will cause more harm than good. Try to speak your mind in a way that will appeal to this person's vanity. Fortunately, you're brilliant at this sort of thing.

• To find out more about what the stars have in store call Russell on **Libra** 09067-531758



**CAPRICORN** (Dec 22-Jan 20)  
IT'S as though you can understand people without using words, so trust your instincts when it comes to an intimate relationship. A friend who is pretending that all is well actually needs to be comforted. Be willing to offer your home as a quiet retreat from their troubles.

• To find out more about what the stars have in store call Russell on **Capricorn** 09067-531761

Calls cost 75p per minute. Service provided by g8wave London N7

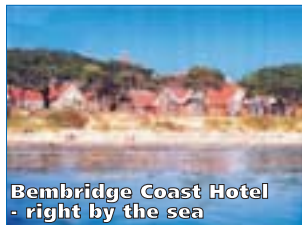
### EXCLUSIVE KOS MEDIA READER OFFER

## Isle of Wight Party & Dance Break

### WARNER BEMBRIDGE COAST HOTEL



A Signature Room



Bembridge Coast Hotel - right by the sea



Great entertainment



Free Bar

FREE BAR  
EVERY  
DAY  
12 noon to 11pm

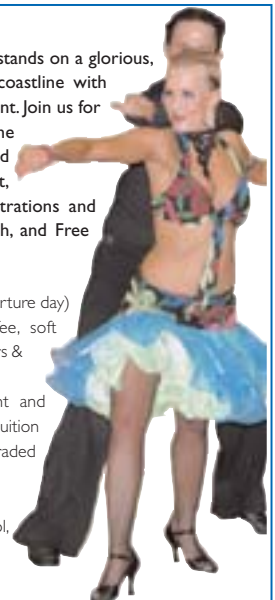
3 NIGHTS  
SELF-DRIVE  
UPGRADED  
SIGNATURE  
ROOM  
£249 pp

FEATURING STARS  
OF STRICTLY  
COME DANCING &  
DANCE TUITION

Bembridge Coast Character Hotel stands on a glorious, unspoilt stretch of Isle of Wight coastline with uninterrupted views across the Solent. Join us for a Private party as we banish the winter blues with a packed programme of entertainment, featuring cabaret, dancing demonstrations and tuition, and much, much, more - oh, and Free Drinks!

#### HIGHLIGHTS:

- FREE drinks each day (excludes departure day) from 12:00 to 23:00 (tea/ coffee, soft drinks, wine with dinner, house beers & spirits)
- Full programme of entertainment and dancing including dancing & dance tuition
- 3 nights accommodation in an upgraded Signature Room
- 3 dinners and 3 breakfasts
- Leisure facilities include: indoor pool, sauna, jacuzzi & more
- Self drive with car ferry included



For more information and bookings call **01895 83 33 33**  
quoting YB1KOS

Holiday operated by **GN Holidays**, Higher Denham, Uxbridge UB9 5EL  
Open: 9am to 5.30pm weekdays; 9.30am to 12.30pm Saturdays  
Email: sales@gnholidays.com





kentnews.co.uk/mobile

The latest Kent news, sport, jobs, property and cars available on your mobile.

Text **KENTNEWS** to **81800**

Service provided by gbowie London, NT. Return texts are free. Standard network text rates apply.



POWERED BY KOS MEDIA



**CROSSWORD & SUDOKU**

No59

SPONSORED BY WATERSTONE'S

Fill the grid so that every column, every row and every 3x3 box contains the digits 1 to 9

**EASY**

4	7		6	9	3			
9			3	8				7
			4				9	1
	4		2					
1	6	8	7		3	4	2	5
				5		1		
3	9			6				
5			1	7				3
		7	9	4		5	8	

**MEDIUM**

2			3					9
			4	6	1		3	
					2		5	
	2	7			1			8
8							7	
6			2			9	4	
	5		1					
		3		9	6	7		
	4				8			3

**HARD**

9								1
					9			8
	2	3	6		5		7	
			4	5				1
5		7		9			2	
4				2	8			
3		9		1	5	4		
5	1			4				
6								8

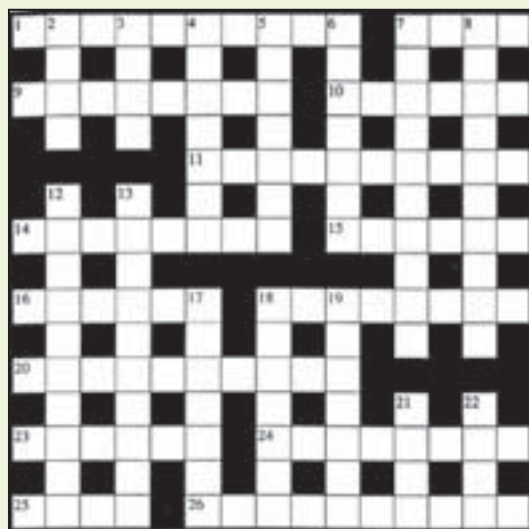
**CRYPTIC CLUES**

**ACROSS**

- 1 Skilled worker, one having a trip? (10)
- 7 Accommodation for some industrious workers (4)
- 9 Arrangement far worse to renounce (8)
- 10 Speak indistinctly, but not quite reach headland near Swansea (6)
- 11 Careless note? (10)
- 14 Lithe ibex fell tragically (8)
- 15 Rod, at home before midnight, playing snooker (6)
- 16 Encourage George to enter vase (4,2)
- 18 Appearing to be presenting itself for discussion (6,2)
- 20 A charmingly odd quality (10)
- 23 A college lecturer is a Greek (6)
- 24 Work of needlewomen growing together (8)
- 25 Regarding Reynard's inclusion of colour (4)
- 26 Enthusiast who doesn't like the sound off (10)

**DOWN**

- 2 More than half of theorbo could be made into another musical instrument (4)
- 3 Charge too much in haste (4)
- 4 We blame new young skipper (3-4)
- 5 Rewriting claim re supernatural event (7)
- 6 Unlikely to settle for a long time (7)
- 7 Person existing? Presumably (5,5)
- 8 Half-a-dozen with nasty allusion that is wicked (10)
- 12 Cricketer including everything hesitantly (3-7)
- 13 Suitability of XPDNC, say (10)
- 17 A tan has disappeared from the girl (7)
- 18 Made sure it had a squared pattern (7)
- 19 Some zit removed from one of mixed race? (7)
- 21 Some bitchiness in restless desire (4)
- 22 Dye coming from an illicit plant (4)



**QUICK CLUES**

**ACROSS**

- 1 Italian cheese (10)
- 7 Destiny (4)
- 9 Steersman (8)
- 10 Northern sea (6)
- 11 Unable to leave home (10)
- 14 Adjudicated (8)
- 15 Flip of a coin (4-2)
- 16 Knowledgeable (6)
- 18 Borderline (8)
- 20 Noticeably (10)
- 23 Trimmed bushes (6)
- 24 Danger is past (3-5)
- 25 Small nail (4)
- 26 All over the place (10)

**DOWN**

- 2 Old Greek coin (4)
- 3 Lemon-peel (4)
- 4 Selfish driver (4-3)
- 5 Without energy (7)
- 6 Surrounding (7)
- 7 Association (10)
- 8 Three-sided (10)
- 12 Speculator (10)
- 13 Quizzed (10)
- 17 Diminish (7)
- 18 Magenta (anag.) (7)
- 19 Kingship (7)
- 21 Bunkum (4)
- 22 Two (4)

**SCRIBBLE HERE**



**LAST WEEK'S SOLUTIONS**

**SUDOKU SOLUTIONS No58**

**EASY**

5	3	8	2	4	7	9	1	6
4	1	7	9	8	6	3	2	5
9	6	2	5	1	8	4	7	3
1	4	9	8	6	3	2	7	5
3	8	9	7	2	1	5	6	4
7	2	6	5	9	4	1	3	8
8	7	3	6	5	9	1	4	2
6	9	1	4	3	2	7	5	8
2	5	4	1	7	8	9	3	6

**MEDIUM**

4	5	1	9	2	8	7	6	3
3	6	9	7	4	5	8	1	2
2	8	7	3	6	1	9	4	5
7	3	2	1	8	6	4	5	9
8	1	5	4	3	9	6	2	7
9	4	6	2	5	7	3	8	1
6	8	9	2	5	7	1	7	4
5	7	3	8	1	4	2	9	6
1	2	4	6	9	7	5	3	8

**HARD**

9	5	7	3	1	8	4	6	2
2	4	1	5	9	6	3	7	8
6	8	5	4	7	2	1	9	3
5	3	4	9	8	6	2	1	7
7	1	9	2	3	4	8	5	6
8	6	7	5	1	3	9	3	4
4	7	5	1	2	3	6	8	9
1	2	8	5	6	9	7	4	3
3	9	6	8	4	7	5	2	1

**CRYPTIC SOLUTION No58**

**ACROSS:** 1 Scared stiff 9 Crafty 10 Gentian 12 Ulysses 14 Trawler 15 Penalty kick 16 Pop 17 Nut 19 Constructed 22 Japheth 23 Dragnet 24 Chaotic 25 Climax 26 The Big Smoke. **DOWN:** 2 Carry on 3 Refusal 4 Dry 5 Tight-fisted 6 Finback 7 Philip 8 Intrepidity 11 Jumping-jack 13 Spy in the cab 18 Top-hat 19 Cheetah 20 Uranium 21 Tintack 25 Cog.

**QUICK SOLUTION No59**

Royalty 21 Blah 22 Par  
Questions 17 Dwindle 18 Magrate 19  
Fellowship 8 Tranquiler 12 Adventurer 13  
Roadhog 5 Languid 6 Ambient 7  
26 Everywhyne **DOWN:** 2 Obol 3 Zest 4  
Slinking 27 Purred 24 Alt-clear 25 Brad  
Toss-up 16 Verses 18 Marginal 20  
10 Ballic 11 Housebound 14 Adjudged 15  
**ACROSS:** 1 Mozzarella 7 Fale 9 Coxswain

Answers to all of this week's quizzes can be found on our website

**FIREWORKS & HALLOWEEN Spectacular**  
at Kent County Cricket Club  
The St Lawrence Ground, Canterbury  
**Fri 31 October**  
Gates Open 6.00 pm Fireworks 8.20 pm  
**COME IN FANCY DRESS -**  
Theme: Michael Jackson's Thriller video  
**YOU MIGHT WIN A PRIZE!** JUDGING Approx 7.30 pm  
For full details & to buy tickets  
Click [www.kentccc.com](http://www.kentccc.com)  
Or call **01227 456886**  
Or collect from the office Mon-Fri 9.30am - 4.30 pm  
Supported by:  
**invictaim**  
Adults £6  
Juniors (Under 16) £4  
Under 12's must be accompanied by an adult  
UNDER NO CIRCUMSTANCES ARE FIREWORKS OF ANY DESCRIPTION TO BE BROUGHT TO THIS EVENT

**KOS MEDIA READER OFFER**

**Prolong the life of your tyres**

Tyre failure is one of the biggest reasons for car breakdown and in addition under-inflated tyres can increase your average fuel consumption.

- Simply screw the Pressure Guards onto correctly inflated tyres in place of existing dust caps
- Red and green indicators rise up and stop perfectly level. If tyres lose more than 2psi, the green indicators withdraw, revealing the red indicator
- Precision engineered to precise tolerances.
- Accurate and reliable
- Fit any tyre operating between 20 and 42psi, covering every car and motorbike
- Highly regarded German TUV certification

The pressure guards are available from only **£11.99** for one pack of four or **£19.98** for two packs.

**1598** Pressure guard x 1 pack of 4 **£11.99**  
**1598A** Pressure guard x 2 packs of 4 **£19.98**

**KOS media**

To order this product visit [www.yourkenttv.co.uk/readersoffers/12836](http://www.yourkenttv.co.uk/readersoffers/12836) or call **0845 165 1004**  
Quote KOS

# yourashfordcinema

## ON GENERAL RELEASE

### HOW TO LOSE FRIENDS AND ALIENATE PEOPLE (15)



Sidney Young (Simon Pegg) is a disillusioned intellectual who both adores and despises the world of celebrity. Offered a job at New York-based Sharps magazine, Sidney finds a friend and confidante in colleague Alison (Kirsten Dunst), who helps him navigate the New York social scene and deal with his nightmare boss (Jeff Bridges).

### THE HOUSE BUNNY (12A)



Playboy bunny Shelley (Anna Farris) gets kicked out of the House of Hef and becomes the house mother to the lamest sorority on the college campus. Before long she helps the girls to learn not to conform to society's expectations. Shelley is living a carefree life until a rival gets her tossed out of the Playboy Mansion.

### IGOR (PG)



Igor the hunchback dreams of winning the annual Evil Science Fair. With help from wise-cracking sidekicks Scamper, a grumpy lab rabbit, and the not so brainy Brain, he plans to create the greatest invention the world has ever seen. Features the vocal talents of John Cusack, Steve Buscemi, John Cleese and Eddie Izzard.

# A transformed man

BY ELLIE GENOWER

LIFE has certainly sped up for 22-year-old Shia LaBeouf recently.

Ever since his hit movie Transformers became the highest-grossing film of 2007, the young actor has had to deal with increasing fame, interest in his private life and inevitable attention from the paparazzi.

"It's crazy and new, you know. I'm figuring it out," he says of the growing attention he receives from fans.

It's been a fast rise to fame for Shia. Last year he played a teenager who thinks he witnesses a murder in the Rear Window-style thriller *Disturbia*, then he picked up plaudits for his role in this summer's *Indiana Jones* blockbuster.

Now he's playing the lead in new action thriller *Eagle Eye*, released at the weekend.

"For me, this was the most vulnerable professional position I've ever been in as far as child to adult transition," he admits.

Shia teams up with *Disturbia* director DJ Caruso in the film, which is based on an original idea by executive producer Steven Spielberg.

He plays Jerry Shaw, an average guy whose life is turned upside down when he receives a mysterious phone call from a woman he's never met. He is thrown together with a stranger, Rachel (Michelle Monaghan), and the mysterious woman pushes the pair into increasingly dangerous situations as the technology surrounding them tracks and controls their every move.

"In anybody else's hands it would have been very scary," Shia says of his headlining role.



LOOKING GOOD: Shia LaBeouf and Michelle Monaghan at the premiere of *Eagle Eye* in Los Angeles. Picture: Matt Sayles/AP/PA

"But because I've kind of grown up with DJ and Steven [Spielberg], it is like being with a group of friends. In my other movies, I've just been riding the coat-tails of something which will be successful, whether I'm in it or not."

Shia's had a tough year, which saw him arrested after an incident in a Chicago pharmacy last

November. More recently, he had a very public car accident in Los Angeles. He needed an operation on his hand as a result – and it's still bandaged today.

"I just remember a car coming at me really fast and then my truck flipping twice," he says of the collision. Luckily, he was able to continue filming *Transformers II* and promoting *Eagle Eye*. The

## VIEW THIS PREVIEW

yourkenttv.co.uk



film explores a nightmare scenario of the Orwellian Big Brother variety.

"It's a cautionary tale," Shia explains. "It's something which could happen and is tangible. What's incredible is that Steven Spielberg had the foresight to see this happening almost 10 years ago."

Unlike many action movies, *Eagle Eye* stayed away from creating a romantic scenario for its two leads. Instead of love scenes, the duo found themselves performing a multitude of tough and intense stunts.

"Michelle's a warrior," laughs Shia. "I don't know if I've ever seen a woman do stunts like she does. And then she gets up and is all friendly and giggly and goes over and eats a cookie. And I'd be sitting there, my elbow hurting, and she'd just turn to me and say 'Why don't you man up?'"

His co-star may have run rings around him on set, but Shia says he's still hungry for a slice of tough-guy action. "I like all that fight stuff," he says, smiling. "For a little Jewish kid to come to the set and be a superhero for five minutes, that's great."



EAGLE EYE  
Certificate PG

YOU CAN WATCH ANY OF THESE PREVIEWS OF THE LATEST MOVIES BY SEARCHING 'PREVIEW' ON OUR SITE @ yourkenttv.co.uk

For all your servicing needs visit

your local professionals

Page 44



M6 Theatre Company in association with Ludus Dance Company

### Best Friends

by Dot Wood & Mary Cooper  
Tuesday 28 October 2pm



Best Friends is an imaginative fusion of theatre, dance and original music and promises to delight children aged 4-7 years and their families this half term!

Tickets £7 Friends & Family ticket £30 for 5 people

Booking Office: 01227 769075  
Online bookings: www.gulbenkiantheatre.co.uk

Fri 24 –  
Thur 30 October



### Brideshead Revisited 12A

Fri – 5.50pm, Sat – 2.50 & 8.50, Sun – 2.50 & 5.50,  
Mon – Thur 6.50pm

### The Pope's Toilet (El Baño del Papa) 15

Fri – 8.50pm, Sat – 6.20pm, Sun – 8.50pm

### In Bruges 18

Mon – 9.20pm

Booking Office: 01227 769075  
Online bookings: www.gulbenkiantheatre.co.uk

## yourashford.co.uk

The latest news, sport, TV, chat, entertainment and information in your local area, available online.



Community TV Sponsored by P&O Ferries



## PROPERTY NEWS

### Northerners are told to stay put

A MASS southward migration from northern cities is not the answer to inequality in the UK, says the Campaign to Protect Rural England.

The thinktank Policy Exchange suggested northerners should leave their homes and depart to rent or buy new accommodation because accommodation, the environment and job prospects in their home areas were poor.

The call was greeted with a volley of opposition – with Conservative leader David Cameron branding it “insane” – and the chorus of disapproval continues to grow.

Commenting on the findings, the CPRE’s senior planner, Kate Gordon, said: “It is difficult to find anything sensible in this report. Mass migration from north to south is the last thing struggling areas need.

“It would widen, rather than narrow, the gap between north and south.”

### Agents need to be eco-friendly

ECO-FRIENDLY homes with energy-efficient components are popular with buyers and can attract a higher price than other homes of similar size.

Recent research across the market has shown that green is an option preferred by many in today’s market.

Friends of the Earth have now said they feel estate agents are not doing enough to capitalise on this trend.

Marie Reynolds from the environmental group said: “There is a clear public appetite for green homes.

“Estate agents should realise energy efficiency is a definite selling point.”

The trend is being increased by growing concern about fuel bills and was first identified by the Energy Savings Trust.

A survey said people were willing to pay about £3,350 more for a house with ecologically-aware features.



**GREEN VIEW:** The Pines Calyx at St Margaret’s has shown the environmentally-friendly way

# Safe as houses amid the banking turmoil

## Cash buyers eye property option during recession

INVESTORS who have lost faith in the banking system because of the volatile economic situation are turning to property as a safe haven for their cash.

Experts say those with cash to spend feel that they can “feel it, touch it and live in it” when it comes to homes – and bricks and mortar won’t disappear overnight, as some share values have.

Estate agents have identified a growth in interest from cash buyers who want physical assets for their money.

The trend is emerging in all corners of the property market, according to agents who are studying the market.

Robert Billson, of Savills, said: “There are people with £50,000 who would rather buy a derelict house and board it up for a while than put their money in an Icelandic bank right now.”

Buyers with cash are in a stronger position to negotiate price reductions than those who need mortgages.

### Derelict

Liam Bailey, head of residential research at Knight Frank, said: “We are seeing a huge amount of interest from investors, partly because they believe that bricks and mortar are safer than banks and stocks and shares in the current climate.

“Now that capital prices are down 15 to 20 per cent on last year’s values, and even more for new-build property, the investment case is more compelling for residential property.

“Income yields have moved up to eight per cent, which suddenly makes sense.

“Now that the investment case for residential property has been underpinned, investors are comparing it to paper investments –



**SOLID FOUNDATIONS:** The banking crisis has made property look like a safer option for many cash buyers

money in the bank or equities. Property suddenly seems a safer investment.”

Financial advisers highlighted the dangers of buying as an investment in a falling market but acknowledged that there was “some logic” for long-term investors with cash to buy now, provided, of course, that they are able to secure a bargain.

Mark Dampier, head of research at Hargreaves Lansdown, an independent financial adviser, said: “With property, you can feel it, touch it, see it and live in it – you know it cannot be taken – so there is some degree of logic to buying now as opposed to depositing in banks if you have the money, although it might all end in tears.”

## TOP DESIGNER WAYNE HEMINGWAY SHARES HIS VIEWS ON THE THAMES GATEWAY AT THE CONSTRUCTION EXPO HELD IN CHATHAM HISTORIC DOCKYARD. FIND OUT MORE @ propertyforkent.co.uk



Property TV SPONSORED BY WWW.THEMORTGAGESHOP.CO.UK

# miles & barr

...not just an estate agent

Kent  
BUSINESS AWARDS  
2007 WINNER

KENT COMPANY of the YEAR



**KINGSNORTH** £249,995

**ASHFORD OFFICE** **BAP01141**

- 4 Bedroom Detached
- Garage & Good Plot
- No Onward Chain



**KENNINGTON** £134,995

**ASHFORD OFFICE** **BAP01302**

- Extended 2 Bedroom Home
- Lounge-Diner, Kitchen, Garage
- No Chain, Prompt Sale Req'd!



**SELLINDGE** £267,995

**ASHFORD OFFICE** **BAP01183**

- Versatile 4 Bedroom Detached Property.
- Rural Location/Stamp Duty Paid
- 3 Reception Rooms



**KENNINGTON** £119,995

**ASHFORD OFFICE** **BAP01294**

- Modern 2 Bed Flat
- First Floor/ Allocated Parking
- No Chain! Keys Available



**KENNINGTON** £114,995

**ASHFORD OFFICE** **BAP01299**

- 2 Bed Purpose Built Flat
- First Floor, Garage En-Bloc
- Modern Kitchen, Call Now!



**ASHFORD** £154,995

**ASHFORD OFFICE** **BAP01217**

- 3 Bed End Terrace
- Enclosed Rear Garden
- Garage



**SINGLETON** £67,500

**ASHFORD OFFICE** **BAP01252**

- 50% Shared Ownership
- 2 Bedrooms, 2 Bathrooms
- Ground Floor, No Chain!



**ASHFORD** £124,995

**ASHFORD OFFICE** **BAP01303**

- 3 Beds, Modern Kitchen-Diner
- D/Stairs WC, Enclosed Garden
- Contemporary & Modern!



**WILLESBOROUGH** £179,995

**ASHFORD OFFICE** **BAP01293**

- 3 Double Beds, 2 Recepts
- Kitchen-Diner & New Conservatory
- En-suite To Master Bedroom



**KENNINGTON** £139,995

**ASHFORD OFFICE** **BAP01282**

- Three Bed Terraced
- 19 Ft Lounge
- Conservatory & O.S.P



**ASHFORD** £164,995

**ASHFORD OFFICE** **BAP01296**

- Two Bed Detached House
- Kitchen/Diner, No Chain
- Close To Town Centre



**WILLESBOROUGH** £285,000

**ASHFORD OFFICE** **BAP01259**

- Must Be Seen Internally!
- 4 Beds, 2 Bath, 2 Recepts
- Approx 200' Mature Garden



**KENNINGTON** £199,995

**ASHFORD OFFICE** **BAP01267**

- Cul-De-Sac Location
- 3 Beds, 2 Recepts, 2 Baths
- Garage & Pkg. No Chain!



**ASHFORD** £287,500

**ASHFORD OFFICE** **BAP01277**

- Quality 4 Bedroom House
- 3 Baths, 2 Recepts, Utility
- Must Be Viewed Internally!



**KENNINGTON** OIEO £150,000

**ASHFORD OFFICE** **BAP01203**

- 3 Bed Semi-Detached
- Sought After Location
- No Onward Chain



**SINGLETON** £67,500

**ASHFORD OFFICE** **BAP01301**

- 50% Shared Ownership
- 2 Bedroom First Floor Flat
- En-suite, Allocated Parking, No Chain



**ASHFORD** £157,500

**ASHFORD OFFICE** **BAP01305**

- 3 Double Bedrooms
- End Of Terraced House
- L Shaped Lounge-Diner



**GODINTON PARK** £139,995

**ASHFORD OFFICE** **BAP01300**

- Extended 2 Double Bed House
- 20' Lounge, 16' Kitchen
- 45' Rear Garden, Parking For 2



# We normally advertise 18 properties on this page

**Not bad, but if you go to our NEW website you'll see over 1,000!**

Our AWARD WINNING website is all new and now even better than before!  
It's easier to navigate with new functions to help you find your ideal home more easily  
– AND IT'S LIVE NOW! Our unique new features include:

- **Photo-flow** – easily scroll through your search results
- **Mobile Search** – if you're always on the move, search via your mobile phone
- **Mapped Results** – your search results displayed on a map including all local amenities
- **Satellite Aerial Photos** – see just how far your ideal home is from the coast
- **Property Packs** – easy to print full-colour property details and map results
- **RSS Alerts** – the latest properties delivered to you on-demand

## milesandbarr.co.uk



The UK's most visited estate agency website\*

[www.your-move.co.uk](http://www.your-move.co.uk)

## Why move with YOUR MOVE?

- Local property from local people with local knowledge
- 95% of our customers would recommend us to a friend\*
- Unrivalled internet presence with over 41 million visits per month\*\*
- Nationally recognised winner of numerous awards for quality, marketing and service
- Accredited member of key industry bodies (ARLA, OEA/OFT)
- Free HIPs†



Source: • Customer satisfaction survey, Dec 2007  
• Property portal visitor stats Jan 2008  
† When you use a YOUR MOVE panel law firm for conveyancing

### ASHFORD



[ashford@your-move.co.uk](mailto:ashford@your-move.co.uk)  
0845 370 9710

Your Move are pleased to offer this mid terrace two bedroom house in the sought after Chartfields Development. The property accommodation comprises living room, modern style fitted kitchen, cloakroom/WC, two bedrooms and bathroom. Access to the first floor. Benefits include landscaped rear garden with rear access and to the front there is off street parking for approximately two cars with barked area. Viewings are highly recommended.



KENNINGTON £124,995



[ashford@your-move.co.uk](mailto:ashford@your-move.co.uk) 0845 370 9710  
• Two Double Bedrooms • Second Floor Flat • Popular Little Burton Location

ASHFORD £124,995



[ashford@your-move.co.uk](mailto:ashford@your-move.co.uk) 0845 370 9710  
• Top Floor • Purpose Built Flat • Master Bedroom Ensuite • 2 Bedrooms

ASHFORD £215,000



[ashford@your-move.co.uk](mailto:ashford@your-move.co.uk) 0845 370 9710  
• Semi-Detached House • Four Bedrooms • De Montfort Park Development

SHADOXHURST £349,950



[ashford@your-move.co.uk](mailto:ashford@your-move.co.uk) 0845 370 9710  
• Detached Bungalow • Four Bedrooms • Rural Village Location • Living Room

WILLESBOROUGH £104,500



[ashford@your-move.co.uk](mailto:ashford@your-move.co.uk) 0845 370 9710  
• Freshhold Flat • One Bedroom • Ground Floor • Living Room

ASHFORD £74,995



[ashford@your-move.co.uk](mailto:ashford@your-move.co.uk) 0845 370 9710  
• Studio Flat • One Bedroom/Living Room • Singleton Location • Ground Floor

KINGSNORTH £164,995



[ashford@your-move.co.uk](mailto:ashford@your-move.co.uk) 0845 370 9710  
• Semi-Detached House • Two Bedrooms • Park Farm Development • Living Room

STANFORD £365,000



[ashford@your-move.co.uk](mailto:ashford@your-move.co.uk) 0845 370 9710  
• Detached • 4 Beds • Master Ensuite • Annexe Bedroom Kitchen Sitting Room

...many more properties available online



KENNINGTON £299,995



[ashford@your-move.co.uk](mailto:ashford@your-move.co.uk) 0845 370 9710  
• Sought After Little Burton Farm • Corner Plot No Through Road • Kitchen/Breakfast Rm

ASHFORD £155,000



[ashford@your-move.co.uk](mailto:ashford@your-move.co.uk) 0845 370 9710  
• Mid Terrace House • 3 Beds • Godinton Park Development • Living/Dining Room

CHARING £449,995



[ashford@your-move.co.uk](mailto:ashford@your-move.co.uk) 0845 370 9710  
• Detached Executive Bungalow • Four Beds • Semi Rural Charing Hill Location

KINGSNORTH £250,000



[ashford@your-move.co.uk](mailto:ashford@your-move.co.uk) 0845 370 9710  
• Detached Family Home • 4 Beds • En-suite To Master • Double Garage & Driveway

ASHFORD £149,995



[ashford@your-move.co.uk](mailto:ashford@your-move.co.uk) 0845 370 9710  
• Mid Terrace House • Three Bedrooms • Living/Dining Room • Kitchen/Lean To

WILLESBOROUGH £117,500



[ashford@your-move.co.uk](mailto:ashford@your-move.co.uk) 0845 370 9710  
• Ground Floor Maisonette • Two Bedrooms • Rear Garden • Communal Parking

ASHFORD £249,995



[ashford@your-move.co.uk](mailto:ashford@your-move.co.uk) 0845 370 9710  
• Link-Detached House • Four Bedrooms • En-Suite To Master • Living Room

ASHFORD £129,950



[ashford@your-move.co.uk](mailto:ashford@your-move.co.uk) 0845 370 9710  
• Terrace House • Three Bedrooms • Conservatory • No Onward Chain

sales lettings mortgages





**CHARTFIELDS**

A 3 bedroom detached property, ground floor WC, dining room, en-suite shower room, UPVC double glazing, UPVC soffits and fascia, NHBC, garage, no chain.  
**£199,950**



**ASHFORD**

A three bedroom end terrace property, ground floor WC, kitchen/diner, UPVC double glazing, car port parking, no chain.  
**£92,950**



**SOUTH WILLESBOROUGH**

A two bedroom semi detached property, part double glazing, useful side yard area, gardens to the front and rear, no chain.  
**£119,950**



**GODINTON PARK**

A four bedroom detached property, fitted kitchen appliances, separate dining room, utility, ground floor WC, en-suite shower room, UPVC double glazing, UPVC soffits & fascia, driveway parking, detached garage, no chain.  
**£279,500**



**MARTINS**  
estates

**69 HIGH STREET  
ASHFORD  
KENT, TN24 8SF  
Telephone: 01233 610444  
www.martinsstates.co.uk**



**KNIGHTS PARK**

A four bedroom detached property, cul de sac location, utility room, conservatory, dining room, ground floor WC, en-suite shower room, UPVC double glazing, NHBC remaining, driveway parking, garage.  
**£229,950**



**KENNINGTON**

A two bedroom mid terrace property, ground floor WC, lounge/diner, gas radiator heating, double glazing, allocated parking.  
**£134,995**



**SOUTH WILLESBOROUGH**

A 4.5 bedroom town house, versatile accommodation, kitchen/diner, family bathroom, separate shower room, en-suite shower room to master, garage, no chain.  
**£190,000**



**WILLESBOROUGH**

A two bedroom semi detached bungalow, conservatory, utility area, family bathroom, second WC, UPVC double glazing, driveway for several vehicles, detached garage.  
**£195,000**

**Bairstow eves**

**Ashford 01233 624315**

ashford.kent@bairstoweves.co.uk

**Countrywide**

**SOUTH ASHFORD**



**OIEO £89,995**

Two bedroom flat top floor flat with views over the park. Popular South Ashford. Garage en bloc.

**PLUCKLEY**



**£144,995**

2 bed period home. Porch, lounge, kitchen/breakfast rm, bathroom, inner hallway; two beds to the first floor. Courtyard garden to the rear.

**WOODCHURCH**



**£149,995**

Two bedroom park home on the popular Shirkoak Park, just on the outskirts of Woodchurch. Double glazing, gas fire central heating.

**KENNINGTON**



**OIEO £150,000**

Three bedroom semi detached house. Lounge/diner, kitchen and family bathroom. Off road parking and garage to the side. No chain.

**WILLESBOROUGH**



**£174,995**

3 bedroom semi detached house. Entrance hall, lounge, dining room, kitchen and conservatory. To the first floor and family bathroom.

**SOUTH ASHFORD**



**£176,995**

Extended 4 bedroom semi-detached family home. Entrance hall, lounge, dining room, kitchen & down stairs bathroom. Driveway & detached garage.

**KENNINGTON**



**£269,950**

Four bedroom detached house. Two reception rooms, kitchen/breakfast room, two en suites and family bathroom. Garage. No onward chain.

**REPTON PARK**



**£299,950**

Four bedroom newly constructed detached house near to junction 9. Two receptions, kitchen, en suite shower room. Garage and driveway.

**KENNINGTON**



**£310,000**

4 bedrooms, en-suite shower rm, gallery styled kitchen, breakfast room, conservatory, 180ft rear garden, annex with en-suite shower room.

**WILLESBOROUGH**



**£310,000**

Five bedroom detached house. Three reception rooms, kitchen, two en suites, family room, detached garage, garage, driveway parking.

# MANN

Countrywide

Ashford Office  
Tel: 01233 639934  
45/47 High Street,  
Ashford, Kent TN24 8TF

Willesborough Office  
Tel: 01233 635737  
119 Church Road, Willesborough,  
Ashford, Kent TN24 0JQ



### Shadoxhurst £479,995

5 bedroom detached bungalow. Approx 1 acre. Master en-suite & dressing roo.

CALL OUR ASHFORD OFFICE 01233 639934



### Hythe £389,000

3 bedroom chalet bungalow. Garage/work shop complex. Master en-suite.

CALL OUR WILLESBOROUGH OFFICE 01233 635737



### Challock £350,000

Four bedroom detached bungalow. 2.5 acres approx. Stable block and paddocks.

CALL OUR ASHFORD OFFICE 01233 639934



### Willesborough £345,000

4 bedroom detached bungalow, enclosed gardens, conservatory, garage, CH, DG.

CALL OUR WILLESBOROUGH OFFICE 01233 635737



### Smeeth £285,000

3 bedroom detached bungalow, no onward chain, village location, off road parking.

CALL OUR WILLESBOROUGH OFFICE 01233 635737



### Ashford £280,000

5-6 bedroom detached house. Garage. Close to town.

CALL OUR WILLESBOROUGH OFFICE 01233 635737



### Kennington £229,995

4 bedroom semi detached house, garden, garage, ORP, kitchen/breakfast room.

CALL OUR ASHFORD OFFICE 01233 639934



### Singleton Hill £215,000

Four bedroom end of terrace. En-Suite & Walk-in wardrobe. Hot tub. Garage & ORP.

CALL OUR ASHFORD OFFICE 01233 639934



### Willesborough £195,000

3 bedroom detached house. Garage and driveway. Popular location. Conservatory.

CALL OUR WILLESBOROUGH OFFICE 01233 635737



### Willesborough £184,995

3 bedroomed victorian family home, upstairs bathroom, refitted kitchen, garden.

CALL OUR WILLESBOROUGH OFFICE 01233 635737



### Singleton Hill £175,000

Three bedroom link detached. No chain. En-suite. Garage & ORP.

CALL OUR ASHFORD OFFICE 01233 639934



### Willesborough £174,995

3 Bedroom Semi Detached, Approximately 70' Garden, Garage, Off Road Parking.

CALL OUR WILLESBOROUGH OFFICE 01233 635737



### Kennington £169,995

Three bedrooms, two reception rooms, conservatory, off road parking.

CALL OUR WILLESBOROUGH OFFICE 01233 635737



### Lydd OIEO £166,000

Three bedroom extended semi detached house. Two reception rooms. Rear garden.

CALL OUR ASHFORD OFFICE 01233 639934



### Willesborough £159,995

Two bedroom end of terrace house. No chain.

CALL OUR WILLESBOROUGH OFFICE 01233 635737



### Ashford £159,950

Three bedroom terrace. No chain. Double glazing, central heating. Lovely condition.

CALL OUR ASHFORD OFFICE 01233 639934



### Kennington £149,995

Three bedroom semi detached house. No chain. Conservatory. ORP.

CALL OUR ASHFORD OFFICE 01233 639934



### Willesborough £149,995

Two bedroom end of terrace. Double glazing. Garage to rear.

CALL OUR WILLESBOROUGH OFFICE 01233 635737



### Kennington £148,000

Three bedroom extended terrace. GFCH & DG. Well presented throughout.

CALL OUR ASHFORD OFFICE 01233 639934



### Charing £140,000

Three bedroom park home. No chain. Off road parking.

CALL OUR ASHFORD OFFICE 01233 639934



### Stanhope £139,995

3 bedroom semi detached house. Conservatory. GF Cloakroom. Garage & Parking.

CALL OUR ASHFORD OFFICE 01233 639934



### South Ashford £139,995

Three bedroom terrace. No chain. DG & CH. Overlooking green.

CALL OUR ASHFORD OFFICE 01233 639934



### Ashford £135,000

Two bedroom 1st floor flat. Modern kitchen with appliances. Central location.

CALL OUR ASHFORD OFFICE 01233 639934



### Willesborough OIEO £116,000

2 bedroom end of terrace house in popular location with gas fired central heating.

CALL OUR WILLESBOROUGH OFFICE 01233 635737



### Willesborough £83,000

One bedroom ground floor flat. Ideal for first time buyers and also investors.

CALL OUR WILLESBOROUGH OFFICE 01233 635737



Moving you since 1910 - our roots in Kent, our branches Countrywide



**KENNINGTON £85,000**

Ground floor maisonette in popular area. One bedroom, lounge, kitchen and bathroom. Communal courtyard.

Ashford Office 01233 624561



**ASHFORD £110,000**

Two bedroom top floor apartment. 1/12 share of the freehold, garage, lounge/dining room, fitted kitchen, two bedrooms and shower room.

Ashford Office 01233 624561



**ASHFORD £124,950**

Two bedroom apartment. 1/12 share of the freehold, garage, lounge/dining room, fitted kitchen, two bedrooms and shower room.

Ashford Office 01233 624561



**SOUTH ASHFORD £138,000**

Two bedroom semi detached chalet bungalow. Two receptions, kitchen, bathroom, 3/4 driveway parking, garage.

Ashford Office 01233 624561



**SOUTH ASHFORD £139,995**

Three bedroom semi detached chalet style home. Two receptions, kitchen and fitted bathroom and kitchen. No chain.

Ashford Office 01233 624561



**KENNINGTON OIEO £139,995**

Two bedroom modern terraced property. Entrance hallway, ground floor cloakroom, modern fitted kitchen and lounge/diner, bathroom, parking for two vehicles.

Ashford Office 01233 624561



**SOUTH ASHFORD £139,995**

Three bedroom terrace house with entrance hall, lounge, dining room, kitchen and family bathroom. Also front and rear gardens, gas central heating and double glazing.

Ashford Office 01233 624561



**CHARTFIELDS OIEO £140,000**

Coach house. Integral garage which has been converted to a study, first floor comprises lounge/diner, kitchen, two double bedrooms and family bathroom. Off road parking.

Ashford Office 01233 624561



**KENNINGTON £149,950**

\*No Chain\* Bay fronted two bedroom terrace. Entrance hall, lounge, dining room, kitchen, lean-to conservatory 2 double bedrooms & bathroom. Frontage ideal for off road parking subject to necessary permissions, 130ft rear garden.

Ashford Office 01233 624561



**WILLESBOROUGH £149,950**

Two bedroom end of terrace house. Off road parking, lounge, kitchen and garden. No onward chain.

Ashford Office 01233 624561



**KENNINGTON £150,000**

Two bedroom semi detached bungalow. Lounge, kitchen/diner, fitted bathroom. Off road parking and garage. No Chain.

Ashford Office 01233 624561



**KENNINGTON £159,950**

1950's semi detached house. Porch, entrance hall, lounge/diner, fitted kitchen, three bedrooms and bathroom. Double glazing, driveway parking for four vehicles, detached garage, enclosed 65ft rear garden.

Ashford Office 01233 624561



**WILLESBOROUGH OIEO £160,000**

1920's style three bedroom semi detached with through lounge/diner, kitchen, utility, downstairs bathroom and lean to, garage, rear mature garden, central heating and double glazing.

Ashford Office 01233 624561



**SOUTH ASHFORD OIEO £169,950**

3 bedroom modern semi detached house. Entrance hall, ground floor cloakroom, modern fitted kitchen/breakfast room and lounge/diner. Master with en suite and family bathroom, off road parking for 2-3 vehicles.

Ashford Office 01233 624561



**HAMSTREET £175,000**

\*NO CHAIN\* 1950's three bedroom semi-detached. Modern fitted kitchen/breakfast room, lounge with fireplace and ground floor cloakroom, family bathroom, enclosed rear garden in excess of 150ft.

Ashford Office 01233 624561



**WILLESBOROUGH OIEO £189,995**

Three bedroom extended semi detached house. Recently renovated. Includes ground floor shower room, study, garage and off road parking.

Ashford Office 01233 624561



**KENNINGTON £199,950**

Three bedroom townhouse. Entrance hall, kitchen/breakfast room, dining room, en suite to the master and family bathroom. Low maintenance rear garden and with parking to the rear.

Ashford Office 01233 624561



**SINGLETON £199,950**

Three bedroom link detached house. Ground floor cloakroom, lounge/diner, kitchen, family bathroom, rear garden, garage and with driveway parking.

Ashford Office 01233 624561



**ORCHARD HEIGHTS £215,000**

Detached house with ground floor wc, lounge, dining room, recently fitted modern kitchen & 12ft UPVC conservatory. 3 bedrooms, master en suite, bathroom. GCH, DG, parking x 2-3.

Ashford Office 01233 624561



**KENNINGTON £219,950**

Detached house. Lounge, dining room, kitchen, utility room, GF cloakroom, three double bedrooms, single bedroom, bathroom & 70ft landscaped garden and off road parking to the front.

Ashford Office 01233 624561



**SHADOXHURST £225,000**

Three bedroom detached bungalow in popular village. Lounge, kitchen/breakfast room, conservatory, bathroom and off road parking. No chain.

Ashford Office 01233 624561



**WYE £225,000**

\*No Chain\* Recently built modern 3 bedroom terrace house. Ground floor cloakroom, lounge/diner, modern fitted kitchen & family bathroom. Allocated parking, garden with fencing and side access.

Ashford Office 01233 624561



**TOWN CENTRE £285,000**

Five bedroom terrace house with basement room. Two reception rooms, master with en suite. Near to town centre and station. Rear garden and allocated parking.

Ashford Office 01233 624561



**KNIGHTS PARK £335,000**

Four bedroom detached house with double detached garage, ground floor cloakroom, two receptions, study, conservatory, utility room, en suite bathroom to master, rear and side garden.

Ashford Office 01233 624561



**CHARING £499,500**

Three bedroom detached bungalow in approx. 2-3 acres. Double garage, kitchen, conservatory, lounge, bathroom, double garage. Countryside views in an area of outstanding natural beauty.

Ashford Office 01233 624561

Established 1910

A member of Countrywide plc.

# Make a wise move

Find the ideal home in the right location



What houses have been sold in the area



Look for what schools are in the area



Look for transport links in the area



Find the nearest local supermarkets



Use [www.PropertyforKent.co.uk](http://www.PropertyforKent.co.uk) where you can search through more than 10,000 homes for sale across the county.

Online you can view full property particulars, location map and agents details, plus find out about current house prices in the area, schools, transport links and even where the nearest supermarket is.

## PropertyforKent.co.uk

The smart way to find your next home



POWERED BY KOS MEDIA

## MOTORS NEWS



### VW offers meaner and leaner people carriers

HOW about supermini fuel consumption from a seven-seater?

That's the VW pitch with eco-friendly BlueMotion Touran and Sharan (pictured) MPVs capable of averaging around 50mpg and emitting just 144g/km and 159g/km of CO2 respectively.

BlueMotion is the badge introduced for the most efficient model in each VW lineup. The diesel engines and gearboxes of both cars have been tweaked – the Touran uses a 103bhp 1.9-litre, while the Sharan has a 138bhp 2.0-litre.

Prices start at £16,725 for the Touran and £21,290 for the Sharan.



### Twin charger power for Seat's new Cupra

SPANISH sporting marque Seat has harnessed parent group VW's 'twin charger' engine technology for its fiery new Ibiza Cupra supermini.

Based on the three-door Ibiza SC or SportCoupé body, it features a 177bhp supercharged and turbocharged 1.4 TSI petrol engine for maximum power and economy. The engine is also cleverly mated with VW's excellent seven-speed DSG (Direct Shift Gearbox) transmission, complete with F1-style steering wheel shift-paddles, offering an automatic option when stuck in heavy traffic.



### Fleet contract deal is another Superb option

SKODA'S impressive new Superb executive model is available on monthly contract hire from just £199 plus VAT for the entry level 1.9 TDI Superb S.

The deal is based on a 36-month/10,000-mile per year deal on vehicles delivered by January 31, 2009 and can be upgraded to other engines and specifications.

The Czech carmaker's flagship has already caught the eye with aggressive retail pricing from £15,490.



**STAR TREKKING:** Despite a few shortcomings, Honda's diesel version of the Civic has the same racing coupé styling of its hot hatch the Type-R and is almost as quick

# Honda's diesel Civic just as capable of warp drive

STARSHIP looks and warp drive performance from Honda's hot Type-R version of the Civic, sent me into orbit for our Motors TV.

The video report – see 'Star Drive' at [www.carsforkent.co.uk](http://www.carsforkent.co.uk) – ended up being a mad mix of Blade Runner and Star Trek.

Surely the mainstream diesel would keep my feet on the ground though? Not quite.

With the same racy coupé styling – even on the five-door – spaceship dashboard, plus a responsive 138bhp 2.2-litre engine and plenty of low-down pulling power, the 'oil burner' can still launch to 62mph in 8.6 seconds – just 1.4 behind the Type-R.

No wonder so many owners are tempted to fit one of many tuning kits/software packages available for this wonderfully smooth engine.

Admittedly, our highly specified 2.2i-CTDi EX five-door (£18,980), does not have the Type-R's tweaked chassis, but it is still a lively and eye-catching car to drive as well as being wonderfully practical.

Basic Civic shortcomings are still there of course: the spoiler that splits the rear screen

## ROAD TEST HONDA CIVIC

BY STEVE LOADER

### STAR QUALITY

Driving appeal	★★★★★
Image	★★★★★
Space	★★★★★
Value	★★★★★
Running costs	★★★★★
Reliability	★★★★★
Green rating	★★★★★

hampers rearward vision and prevents fitting a rear wash/wipe, though I never found this a problem.

The rising waistline that works so well for the futuristic styling also makes it harder for kids and smaller passengers to see out, while generous underfloor storage beneath an already big boot is achieved by omitting the spare wheel.

But I do feel like I am nit-picking when the Civic does so much else well: the styling will still cut a dash when this version finally gets the chop – unlike its predecessor – and the quality of the interior is excellent.

True, that Star Trek fascia divides opinion and can look fussy, but it works well and the digital speedo sits right in your eyeline.

And it is a real driver's car without being harsh on any passengers; tight cornering and grip is aided and abetted by a crisp six-speed gearbox and light yet responsive steering.

Civic prices start at £14,530 with the diesels weighing in from £16,440 – not bad for a distinctive and reliable Swindon UK-built family hatch cum spaceship.

• Email [steve.loader@kosmedia.co.uk](mailto:steve.loader@kosmedia.co.uk)



SEE MOTORSTV FOR  
MORE ROAD TESTS  
BY STEVE LOADER @  
[yourkenttv.co.uk](http://yourkenttv.co.uk)

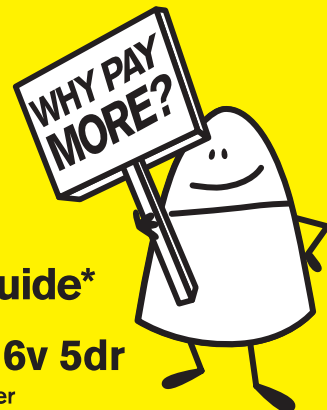


Need a new car? Then visit [www.carsforkent.co.uk](http://www.carsforkent.co.uk)



# Don't pay retail prices!

Our cars are lower than Parker's Car Price Guide\*



**SAVE  
£7720  
AGAINST  
PRICE  
WHEN  
NEW\*\***

## 07 07 Peugeot 307 S 1.6 16v 5dr

- Metallic Paint • Alloys • Air Con • Radio/CD Player
- Cost new £14,212 • Parker's Price £7,555\* • Also available in Auto & Diesel

**FAIR PAYMENT**  
**£99.21**  
PER MONTH

**FAIR PRICE**  
**£6490**

**FAIR SAVING**  
**£1065**  
AGAINST PARKER'S PRICE GUIDE

**CHOICE OF  
30**

40 monthly payments <b>£99.21</b>	Cash price <b>£6490</b>	Customer Deposit <b>£1300</b>	1 monthly payment <b>£195</b>	Final payment <sup>^</sup> <b>£2759</b>	Total amount payable <b>£8222.40</b>	Total charge for credit <b>£1732.40</b>	APR <sup>†</sup> <b>13.7%</b>	Mileage per annum <b>6,000</b>	Excess mileage charge <b>7p/mile</b>
--------------------------------------	----------------------------	----------------------------------	----------------------------------	--------------------------------------------	-----------------------------------------	--------------------------------------------	----------------------------------	-----------------------------------	-----------------------------------------

### Finance Information

**£1 Deposit**  
5 years to pay

**8.9% APR**  
Typical with a Black Horse car loan

- Why buy from us?
- ✓ HPI Checked
  - ✓ 64 point quality inspection
  - ✓ Top price paid for your car
  - ✓ 1st class warranties & accessories
  - ✓ FSA accredited

- Ultimate Plus Scheme available.
- ✓ No deposit, 36 monthly payments, then it's your choice
  - ✓ Either Part Exchange car for a newer one, give it back or pay off outstanding balance

**SAVE TIME AND CALL**  
**0845 871 5268**  
For instant Credit Approval



### Scoop Purchase!

**SAVE  
£10212  
AGAINST  
PRICE  
WHEN  
NEW\*\***

**ONLY  
2  
LEFT**

**FAIR SAVING**  
**£1780**  
AGAINST PARKER'S PRICE GUIDE



**07 Reg Ford** From **£6990**  
Mondeo Estate 1.8 LX 5dr  
Parker's Price £8770\*



**05 Reg Nissan**  
Micra 1.5 dCi 65 S 3dr  
Met Paint • CD • Airbags • E/Pack  
Parker's Price £5190\*  
AutoPlanet Price **£4999** Choice of 255 Small cars  
A fair saving of £191



**56 Reg Renault**  
Megane 1.4 Dynamique 5dr  
Met Paint • Alloys • E/Pack • Alarm  
Parker's Price £6415\*  
AutoPlanet Price **£6299** Choice of 365 Medium cars  
A fair saving of £116



**06 Reg Ford**  
Mondeo 1.8 LX 5dr  
Climate • Cruise • E/Pack • Airbags  
Parker's Price £6620\*  
AutoPlanet Price **£5799** Choice of 215 Large cars  
A fair saving of £821



**07 Reg Vauxhall**  
Zafira 1.6i Club 5dr (AC)  
Air Con • Alarm • CD • Roof Rails • E/Pack  
Parker's Price £8755\*  
AutoPlanet Price **£7499** Choice of 140 MPVs  
A fair saving of £1256

We have fair deals on all our cars. It's only fair. Here's a small selection. See our website for further details!

**Small Cars** Choice of 255

53 to 57 Reg Peugeot 206 - Choice of 55	£4,999
51 to 57 Reg Renault Clio - Choice of 25	£3,999
Y to 07 Reg Ford Fiesta - Choice of 20	£3,299
51 to 56 Reg Mini One/Cooper/S - Choice of 25	£7,499
03 to 56 Reg Toyota Yaris - Choice of 20	£4,999
52 to 07 Reg Vauxhall Corsa - Choice of 20	£4,799

**Medium Cars** Choice of 365

05 to 57 Reg Mazda3 - Choice of 20	£7,799
06 to 08 Reg Peugeot 207 - Choice of 25	£6,799
02 to 57 Reg Peugeot 307 - Choice of 90	£5,299
03 to 57 Reg Renault Megane - Choice of 25	£4,999
52 to 07 Reg Ford Focus - Choice of 40	£3,799
02 to 57 Reg Vauxhall Astra - Choice of 45	£5,499

**Large Cars** Choice of 215

54 to 08 Reg Peugeot 407 - Choice of 50	£5,999
02 to 57 Reg Renault Laguna - Choice of 10	£3,499
X to 57 Reg Ford Mondeo - Choice of 70	£3,999
02 to 55 Reg Toyota Avensis - Choice of 10	£2,199
54 to 57 Reg Vauxhall Vectra - Choice of 25	£6,799
53 to 56 Reg VW Passat - Choice of 10	£5,499

**MPVs** Choice of 140

54 to 57 Reg Peugeot 807 - Choice of 10	£9,999
04 to 08 Reg Renault Scenic - Choice of 10	£5,699
Y to 07 Reg Citroen Picasso - Choice of 20	£3,799
05 to 08 Reg Ford Focus C-Max - Choice of 10	£6,499
53 to 08 Reg Vauxhall Zafira - Choice of 20	£5,499
54 to 07 Reg VW Sharan - Choice of 15	£9,999

**Prestige Cars** Choice of 85

06 to 56 Reg BMW 1 Series - Choice of 5	£12,999
52 to 07 Reg BMW 3 Series - Choice of 10	£6,299
53 to 06 Reg Jaguar X-Type - Choice of 20	£8,299
W to 04 Reg Lexus IS200 - Choice of 5	£6,499
51 to 55 Reg Mercedes A-Class - Choice of 10	£5,499
03 to 55 Reg Mercedes C Class - Choice of 15	£9,499

**Sports & 4X4s** Choice of 85

54 to 07 Reg Mazda MX-5 - Choice of 10	£9,799
04 to 07 Reg Mazda RX-8 - Choice of 15	£9,499
05 to 56 Reg Honda CR-V - Choice of 10	£10,599
Y to 06 Reg Land Rover Freelander - Choice of 10	£5,499
54 to 55 Reg Nissan X-Trail - Choice of 5	£8,999
51 to 55 Reg Toyota Rav4 - Choice of 15	£5,799

**AutoPlanet**  
Your local car superstore

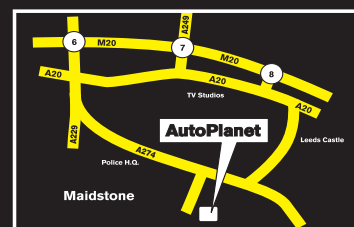
- Over 2000 cars in group stock!
- Up to **3 years warranty** on used cars
- 64 point inspection**
- Vehicle history check**

**Maidstone** Bircholt Road

LOW local call rate  
**0845 871 4985**

[www.autoplanetmaidstone.co.uk](http://www.autoplanetmaidstone.co.uk)

Mon to Fri: 9am - 7pm • Sat: 9am - 6pm • Sun: 11am - 5pm



\* Cheaper than Parker's Guide retail prices on selected models only. Parker's franchised retail price for a nearest match specification. † 13.7% APR applies to selected models. Fair deal finance example based on an 07 07 Peugeot 307 S 1.6 16v 5dr subject to status and age. \*\* This payment does not have to be made if you choose to hand your car back to Peugeot. \*\*\* Saving based on current new car list price of a 07 07 Peugeot 307 S 1.6 16v 5dr: £14,212 inc. metallic paint and 07 Ford Mondeo 1.8 LX 5dr: £17,202 inc. metallic paint. Terms and conditions apply. This is a limited offer subject to availability, the company reserves the right to withdraw the offer at any time. Offer available on selected cars upon request at commencement of the sales process. Ask your local dealer for further information. AutoPlanet are licensed credit brokers. Written details available upon request. Finance is subject to status, guarantees/indemnities may be required. Cars shown for illustrative purposes only. All prices correct at time of going to press. Monthly payment options available on all cars. Written quotations on request, subject to status, applicants must be over 18. In most cases the customer may not be the 1st registered owner on the registration documents. Address: 1 Lea Valley Road, Chingford, London, E4 7PX.

## USED CAR ROUND-UP: OUR PICK FROM A KEY SECTOR

### AFFORDABLE FAMILY HATCHBACKS

**carsfor**kent.co.uk

LOOKING to downsize yet still run a car that does it all? Start shopping for a family hatchback; it seats five, can be crammed like a small van and represents a good balance of space, flexibility and economy... providing you don't go for the 'hot hatch' version. Competition is tough in this sector too, so there are few duds to beware of. Our trio here are affordable and should each give excellent service even if they offer differing propositions on street credibility – the Almera was axed primarily for its dull image.

#### FORD FOCUS



BRITAIN'S favourite car. Or is it? Some say it's number one through Ford's formidable market share. Fair point, but the Focus is also great to drive, practical, well-made and blessed with good engines. For second-hand buyers there is a fantastic choice of power – including the rapid ST – trim levels and body styles: a smart saloon and estate plus a coupé convertible. The car's popularity and ordinary looks are a weakness though and reason enough for some buyers to look elsewhere.

##### STAR QUALITY

Driving appeal	★★★★★
Looks and image	★★★★★
Space	★★★★★
Value	★★★★★
Running costs	★★★★★
Reliability	★★★★★
Quality	★★★★★

#### NISSAN ALMERA



NISSAN always struggled to glamorise the Almera, but devotees cherished its solid build and reliability. Used car buyers love it even more for its modest prices, though good ones can still fetch decent money. The five-door is the winner for all-round versatility, but the rarer three-door is sportier looking. The balance of driver appeal and ride is also well-judged and Nissan kept specs high to maintain the car's competitiveness in a tough sector before finally throwing in the towel.

##### STAR QUALITY

Driving appeal	★★★★★
Looks and image	★★★★★
Space	★★★★★
Value	★★★★★
Running costs	★★★★★
Reliability	★★★★★
Quality	★★★★★

#### MAZDA 3



MAZDA'S close relationship with Ford means that a lot of Focus resides beneath the skin of the Mazda3 and that means neat handling. Yet that skin also makes the Mazda stand out from its ubiquitous half-sister – a fact not lost on used car buyers looking for something distinctive. The '3' is mostly found as a capacious hatchback, but there is also a sporty saloon that shares few panels with it. Engines are lively, in line with Mazda's sporty 'Zoom-Zoom' image.

##### STAR QUALITY

Driving appeal	★★★★★
Looks and image	★★★★★
Space	★★★★★
Value	★★★★★
Running costs	★★★★★
Reliability	★★★★★
Quality	★★★★★

# Get in gear for a new car

Search and find 1000s of Kent cars online

## CarsforKent.co.uk

The smart way to find a car in the County

POWERED BY KOS MEDIA



NEWINGREEN  
VEHICLE CENTRE  
SALES • SERVICE • REPAIRS

Ashford Road Hythe CT21 4JB  
Monday to Saturday  
Open 8.30am to 5.30pm

01303 267 597

www.newingreenvehiclecentre.co.uk  
newingreenvehiclecentre@yahoo.com

WHAT'S INCLUDED IN THE PRICE: (ONLY CARS OVER £2000)  
• 12 MONTHS DEALER WARRANTY • PRE-DELIVERY INSPECTION • FULL VALET  
• HPI CHECK • SMALL SERVICE • 6 MONTHS ROAD TAX

04/54	MERCEDES E270 CDI Auto Diesel, Cream Leather, Heated Seats, Climate Control, C/C, E/W, CD player, Met Blue	£12,995
95/M	FORD TRANSIT 150 TD Motor Home Turbo Diesel, Fully Loaded, White	£12,995
03/03	RANGE ROVER HSE Auto Diesel, Leather, Heated Seats, Remote Locking, E/W, Alloys, CD Player, Blue	£12,995
00/X	MERCEDES SLK 230 CONVERTIBLE Auto, FSH, Leather, E/W, Remote Locking, Heated Seats, Elec Roof, CD Player, Alloys, 32,321 Miles, Met Blue	£8,995
05/55	VOLKSWAGEN TOURAN SPORT TDI MPV 1 owner, 7 Seater, 6 Speed, E/W, RCL, Climate Control, Alloys, CD Player, Black	£8,995
99/T	MERCEDES CLK 320 CONVERTIBLE Auto, Elec Roof, Leather Seats, C/C, E/W, Remote Locking, Alloys, 44,000 Miles, Met Blue	£7,995
04/04	FORD GALAXY 2.3 ZETEC 7 Seater, A/C, Remote Locking, E/W, Elec Mirrors, CD Player, 34,000 Miles, Met Blue	£6,995
02/02	TOYOTA PREVIA GS 2.4 7 Seater, A/C, E/W, Elec Mirrors, 64,000 Miles, Silver	£5,995
01/X	MERCEDES C200 KOMP AVANTGARDE Auto, Leather, E/W, Remote Locking, Alloys, CD Player, Silver	£5,995
04/04	PEUGEOT 206 X SI 2.0 HDI 7 Owners, Auto Wipers, Auto Lights, A/C, E/W, Remote Locking, CD Player, 44,000 Miles, Met Blue	£5,495
06/55	PEUGEOT 307 1.4 S Remote Lockin, A/C, E/W, Alloys, CD Player, Red	£5,495
01/51	BMW 530I AUTO, Climate Control, C/C, E/W, Elec Mirrors, Leather, Met Red	£4,795
04/54	VAUXHALL VECTRA DTI ENERGY ESTATE 2 Owners, FSH, A/C, Alloys, Remote Locking, E/W, Met Blue	£4,795
02/52	VOLKSWAGEN GOLF GT TDI 2 Owners, 5 Door Hatchback, 6 Speed, Climate Control, Sunroof, Met Blue	£4,795
01/X	VOLKSWAGEN GOLF 2.0 CONVERTIBLE AUTO, 2 Owners, E/W, Remote Central Locking, PAS, Elec Mirrors, Silver	£4,495
03/03	LAND ROVER FREELANDER 1.8 SERENGETI SE 2 Owners, RCL, E/W, T/C, Elec Mirrors, Alloys, CD Player, Green	£4,495
05/05	RENAULT MEGANE 1.4 DYNAMIQUE 1 Owner, Remote Locking, E/W, Elec Mirrors, Climate Control, Alloys, CD Player, Red	£4,495
99/S	BMW 320I CONVERTIBLE Elec Roof, Leather, Alarm, E/W, Central Locking, Elec Mirrors, Alloys, Silver	£4,495
03/03	VOLKSWAGEN PASSAT 1.8 TURBO ESTATE FSH, Climate Control, Electric Heated Mirrors, E/W, RCL, Roof Bars, CD Player, Grey	£4,495
02/52	MG ZT190 Alloys, Cruise Control, Climate Control, Remote Locking, E/W, Part Leather Seats, CD Player, Met Green	£4,495
04/04	CITROEN XSARA PICASSO DESIRE 2 1.6 MPV 1 Owner, PAS, A/C, E/W, Elec Mirrors, Remote Central Locking	£4,295
03/52	PEUGEOT 307 1.6 RAPIER ESTATE 2 Owners, A/C, E/W, Elec Mirrors, Remote Locking, Roof Bars, Luggage Cover, 56,000 Miles, Black	£3,995
03/03	FORD FUSION 2 1.4 SEMI-AUTO 5 Door Hatchback, 2 Owners, Remote Locking, E/W, A/C, 40,000 Miles, Met Grey	£3,995
99/T	JAGUAR 3.0 V6 S TYPE AUTO FSH, Cream Leather, Climate Control, Remote Locking, E/W, Met Red	£3,995
00/W	AUDI A3 TDI Suede Seats, Climate control, E/W x4, Elec Mirrors, Alloys, Black	£3,795
03/53	RENAULT CLIO BILLABONG 1.2 16V 2 Owners, 3 Door Hatchback, Remote Central Locking, PAS, Elec Mirrors, Sun Roof, CD Player, Silver	£3,795
00/X	FORD GALAXY TDI 7 Seater, A/C, E/W, Central Locking, Alloys, Roof Bars, CD Player, Met Red	£3,795
03/53	MAZDA PREMACY 1.8 GLX MPV 2 Owners, A/C, E/W, Electric Mirrors, Remote Central Locking, Twin Air Bags, CD Player, Roof Bars, Met Blue	£3,795
00/V	VOLKSWAGEN GOLF TDI AUTO Elec Sunroof, Elec Mirrors, E/W x4, Met Green	£3,495
03/03	NISSAN PIMERA STD ESTATE 2 Owners, Sat Nav, 6 Speed, A/C, Remote Locking, E/W, Met Grey	£3,295
02/51	FORD MONDEO 1.8 LX 5 Door Hatchback, E/W, Elec Mirrors, RCL, Heated Windscreen, A/C, Alloys, CD Player, 59,000 Miles, Silver	£2,995
02/52	PEUGEOT 406 2.0 LX HDI Climate Control, E/W, Elec Mirrors, CD Player, 61,000 Miles, Silver	£2,995
01/Y	FORD FIESTA 1.2 LX 5 Door Hatchback, PAS, A/C, Central Locking, E/W, 30,452 Miles, Met Black	£2,795
01/51	TOYOTA YARIS 1.0 GS VVTI E/W, Central Locking, PAS, Red	£2,695
01/51	SEAT LEON 1.4 S 5 Door Hatchback, PAS, E/W, Central Locking, Alloys, Blue	£2,695
01/Y	FORD MONDEO 2.0 LX 5 Door Hatchback, A/C, Heated Windscreen, E/W, RCL, Elec Mirrors, CD Player, 68,000 Miles, Met Blue	£2,495
02/52	KIA RIO 1.3 LX ESTATE 1 Owner, Central Locking, E/W, PAS, Luggage Cover, 41,778 Miles, Red	£2,495
00/X	VAUXHALL ASTRA 1.6 CLUB 5 Door Hatchback, A/C, E/W, Remote Locking, PAS, Silver	£2,295
01/51	ROVER 75 CLASSIC 1.8 SE A/C, Remote Locking, E/W, Alloys, CD Multiplay, Gold	£2,295
98/R	AUDI A4 1.8 SE E/W, Remote Locking CD Player, Blue	£1,995
02/02	CITROEN XSARA LX AUTO 5 Door Hatchback, Remote Locking, E/W, A/C, PAS, Silver	£1,995

Part  
Exchange  
Welcome

Finance  
Arranged

Cars  
Bought For  
Cash

**HOBBS · PARKER**

Car Auctions LLP

**HOBBS · PARKER**

Car Auctions LLP

## Want to sell your car?

<b>Whats it worth?</b>	Speak to our professional auctioneers for a free and accurate valuation.
<b>Can i put a reserve price on it?</b>	Yes you can, and we won't sell it for less without speaking to you first.
<b>How do i do it?</b>	Bring the car to us with your Log book, MOT etc and we'll enter it into the next sale.
<b>Why should i put it in an Auction?</b>	No costly adverts. No joy riders, No timewasters. No undesirables coming to your home. 100's of buyers all looking at your car at the same time.
<b>When are the Auctions?</b>	Every Monday and Wednesday evening at 6.30pm. Van auctions every other Thursday at 3.00pm
<b>What does it cost?</b>	Entry fee is £20. Commission on Sold vehicles is £20 + 6% (all charges are subject to VAT)
<b>When do i get paid?</b>	We will send you a cheque within 48 hours of the sale.
<b>Is it really that easy?</b>	Yes it is! We sell over 5000 Cars every year!

Hobbs Parker Car Auctions LLP, Ashford Market, Orbital Park,  
Ashford, Kent TN24 0HB • 01233 506266

[www.hobbsparker.co.uk/cars](http://www.hobbsparker.co.uk/cars)

Wednesday 12 November 6.30pm

## Auction of Sports and High Performance Vehicles

### Entries Now Invited...

In our Sports and High Performance Auctions we typically offer in excess of 100 vehicles ranging from approximately £1000 to £25,000.

A good selection of vehicles will be offered, including many of today's most popular makes and models such as: BMW, Mercedes, Audi, Mitsubishi, Toyota, Saab, Peugeot, Renault etc.

Hobbs Parker are an established company operating from a modern, purpose built auction centre.

Buying is made very simple and straight forward, all vehicles are HPI checked prior to sale, with the majority of entries coming from the general public, established and reputable garages, local companies and many of the Major Main Franchised dealerships throughout Kent.

We are open to the general public and most major credit and debit cards accepted. For sellers, payment is within 48 hours of the sale. We provide free and accurate valuations and can advise you of a realistic reserve price.

For free and instant marketing of your vehicles, you can easily enter your vehicles on our website yourself. [www.hobbsparker.co.uk](http://www.hobbsparker.co.uk) Just click on "cars", and "add vehicle to list"

For more information, please do not hesitate to give us a call on 01233 506266 or visit our website.

Hobbs Parker Car Auctions LLP, Ashford Market, Orbital Park,  
Ashford, Kent TN24 0HB • 01233 506266

[www.hobbsparker.co.uk/cars](http://www.hobbsparker.co.uk/cars)



**TO ADVERTISE:** EMAIL US @: [appointments@kosmedia.co.uk](mailto:appointments@kosmedia.co.uk)

TELEPHONE US ON: 01303 817040

FAX US ON: 01303 817004

- ACCOUNTANCY
- ADMINISTRATION, SECRETARIAL, PA
- AGRICULTURE, FORESTRY, ENVIRONMENT
- ART AND DESIGN
- CATERING, HOSPITALITY
- CONSTRUCTION, ARCHITECTURE, SURVEYORS
- CUSTOMER SERVICE, CALL CENTRE
- DOMESTIC
- EDUCATION, TEACHER, SCHOOL
- ENGINEERING, MANUFACTURING, UTILITIES
- ESTATE AGENCY, PROPERTY

- GRADUATE, TRAINEES
- HEALTH AND SAFETY, SECURITY, DEFENCE
- HR, RECRUITMENT
- INDUSTRIAL, WAREHOUSE, FACTORY
- IT, INTERNET, TELECOMS
- INSURANCE, BANKING, FINANCE
- LEGAL
- LEISURE, TOURISM, TRAVEL
- MANAGEMENT CONSULTANCY
- MANAGEMENT, SENIOR POSITIONS
- MARKETING, ADVERTISING

- MOTOR TRADE, DRIVER
- NOT FOR PROFIT, CHARITIES
- NURSING, MEDICINE, CARE WORK
- OTHER
- PRINT, PACKAGING, DISTRIBUTION
- PR, MEDIA, JOURNALISM
- PUBLIC SECTOR, SOCIAL SERVICES
- RETAIL, WHOLESALE, SALES
- SCIENTIFIC AND PHARMACEUTICAL, RESEARCH
- TRANSPORT, LOGISTICS, AVIATION

**Senior & General Appointments** 39-43

**EXPERIENCED PART TIME TELESALERS**  
 9.30am-1.30pm Mon-Fri (20hrs)  
 £7.50 hr + commission + bonuses  
**MUST HAVE EXPERIENCE**  
 Ashford based publisher  
 Tel: (01233) 643574

**Home Carers required!**  
 £8.50 per hour for specialist contracts.  
 £7.25 to £9.25 for ad-hoc calls. NVO. 2 desirable.  
 Call: Ashton Macey Ltd on 01732 523477 (office hours)

**Night Operations Co-ordinator**  
 Food wholesalers require a Night Operations Co-ordinator to ensure smooth running of picking, loading & despatch of customer orders/invoices.  
 Some computer experience required.  
 Previous experience preferred  
 Sunday to Thursday 12 midnight to 9am  
 Letter with CV to be sent to: Georgina Davis, Human Resources Turners Fine Foods, Spelmonden Farm, Goudhurst, Kent, TN17 1HE  
 e-mail: [georgina@turnersfinefoods.co.uk](mailto:georgina@turnersfinefoods.co.uk)

**TEMPORARY DISTRIBUTORS REQUIRED**  
 To deliver the Thomson Local in Ashford, Hawkhurst, Folkestone, Hythe, Charing, New Romney, Goudhurst, Tenterden & surrounding areas.  
 Good rates of pay and flexible working hours.  
 You will need a car to transport your directories.  
 CALL: 01252 390990.  
 WEB: [www.thomsondirectories.com/distribution](http://www.thomsondirectories.com/distribution)

**Abbey Healthcare Limited**  
 A vacancy exists in the Whitstable/Herne Bay area for a **HOME MANAGER**.  
 You will be an RGN with a RMA and at least 2 years experience, working in a managerial role, preferably in the older people client group)  
 The main requirements of our Home Managers are to ensure that the highest standard of care is delivered through effective management of staff and achievement of agreed targets. Salary negotiable  
 To apply, please send your CV to:  
 Abbey Healthcare Limited, c/o Springfield Residential Home Hengist Road, Westgate-on-Sea, Kent, CT8 8LP  
 Closing date: 29th October 2008

**TEACHERS! ARE YOU EARNING £132 PER DAY?**  
 IF NOT, CALL US! 01634 817575

**MAINTENANCE ASSISTANT**

Successful Ashford Company requires a practical and mechanically minded individual to join our Maintenance team. The role involves both daily maintenance of existing machinery plus equipment and work on new projects and developments.

The successful candidate will be able to work on their own and within a team which has a "can do" attitude. An interest or some knowledge of machines and mechanics will be an advantage. Good physical fitness and agility are also required. Induction training will be given.

Working hours are usually 5 days a week Mon-Fri 7.30 to 17.00. In addition there can be some Saturday morning work. We offer a very varied working day, good team spirit and plenty of fresh air, as well as good rates of pay, Stakeholder Pension Scheme and rewards for good performance.

Applications in writing please, in letter, email ([jobs@palmstead.co.uk](mailto:jobs@palmstead.co.uk)) or ask for an application form from the office or download one from our web site. For an informal talk speak to Mark Chapman (01233 813340).

**Please reply to this advert by close of business Monday 27th October 2008 or before.**

Palmstead Nurseries, Harville Road, Wye, Ashford, Kent, TN25 5EU  
[www.palmstead.co.uk](http://www.palmstead.co.uk)

**To advertise in this section**  
**01303 817040**

**Ashford Christ Church**

A Church of England Specialist Maths and Computing College  
 Headteacher: Catherine Barber, Millbank Road, Kingsnorth, Ashford, Kent TN23 3HG

Are you the type of person that feels that sometimes life takes itself a little too seriously, that people want to see a face they recognise, trust and know are welcoming in whatever circumstances?  
 Can you raise yourself each day to make others smile and in return know that you have a gift that is valued for its importance as well as the message it sends?  
 Christ Church is at the heart of its community and proud of its Christian ethos. It is fully inclusive and offers excellent pastoral care to students within a welcoming environment.  
 Headteacher and Board of Governors are seeking to recruit a passionate, hardworking and dedicated.

**SENIOR RECEPTIONIST**  
 Post available 37 hours per week – 52 weeks per year  
 Responsible to the Bursar for the front of school welcome, you will be the first point of contact with staff, pupils, parents and outside agencies. It is therefore very important that you present a cheerful disposition, are efficient and effective in operating telephones whilst greeting people and ensuring they are well looked after.  
 Kent Pay Scheme Band 4 Pts 11 – 14 (£15,826 – £16,627).  
 Visit our website: [www.ashfordchristchurch.com](http://www.ashfordchristchurch.com)  
 For further information and an application pack please contact James Norton at [jamesnorton@ashfordchristchurch.com](mailto:jamesnorton@ashfordchristchurch.com)  
 Telephone: 01233 623465 or Fax: 01233 636861  
 Closing date: Monday 10th November 2008.  
 Appointment is subject to Enhanced CRB check.

**Harbour Homes UK Ltd**  
 We are now recruiting  
**FULL TIME SUPPORT WORKERS**  
 for our new mental health care home in Herne Bay  
 For further information please contact  
 Susan Sykes on 01227 722425 or 07528127190

**LEAFLET DISTRIBUTORS WANTED**  
 Excellent rates per 1000.  
 Bonus scheme!  
 Local areas for successful applicants.  
 Call for more information on 01483 753426

Operating in the drug & alcohol and mental health sectors, KCA (UK) provides a wide range of high quality and innovative specialist services for adults and young people.

**REF: 520 – DRUG & ALCOHOL GROUP WORKERS**  
**EAST & WEST KENT - 37 hours per week**  
**£20,736 - £26,835 (SCP 25-33) pay award pending**

You will be part of a community team, providing a range of services for people with drug and alcohol problems. Working as part of the day programme team, you will be required to take a leading role in the planning and delivery of a structured holistic programme, which includes group work, assessment, key-working, skills training and complementary therapies. You will need a relevant qualification (counselling would be advantageous) and group-work experience, preferably in a drug and alcohol day programme or residential setting.

**For an application form contact: KCA (UK) Dan House, 44 East Street, Faversham, Kent ME13 8AT. Tel: 01795 590635, Fax: 01795 539351, Email [recruitment@kca.org.uk](mailto:recruitment@kca.org.uk), website [www.kca.org.uk](http://www.kca.org.uk)**

**Closing date: 24th October 2008**  
**Interview date: 30th October 2008**

KCA (UK) is committed to the principles of equality of opportunity for all and welcomes applications from people with experience of substance use or who have had previous problems with substance misuse.  
 Charity No: 292824

Operating in the drug & alcohol and mental health sectors, KCA (UK) provides a wide range of high quality and innovative specialist services for adults and young people.

Could you dedicate your business or professional skills for about 2 hours per month to genuinely help improve lives?  
 Last year KCA worked with over 20,000 adults and young people to reduce the harm caused by drug, alcohol and mental health issues.  
 Due to the retirement of long-standing trustees, we are looking for new volunteers who can offer time and enthusiasm to help oversee the continued development of this well respected charity.

**TRUSTEES**

The KCA board consists of 12 trustees who play a key role in ensuring that the organisation operates in line with its charitable objectives. Trustees meet regularly with members of the KCA senior management team to review performance, formulate policy and revise procedures. You would be directly involved in steering the continued success of this developing charity. Trustees attend meetings 8 times per year in Faversham (normally 17.30 to 19.30), and are also invited to attend service centres and occasional KCA events.

We are looking for trustees who have an interest in the drug, alcohol and mental health issues. We particularly welcome applications from within finance, law and public services sectors and from people with experience in service provision, including previous service users.

KCA was founded in 1975 and has approximately 300 staff operating in over 20 service centres around the South East and in London. The organisation prides itself on developing innovative services, and on responding to the needs of the communities it serves.

Expenses can be claimed by trustees.

**If you are interested or would like to know more, please contact the Chief Executive, Anton Derkacz ([anton.derkacz@kca.org.uk](mailto:anton.derkacz@kca.org.uk)) on 01795 590635 or the Chair of Trustees, John Holroyde on [jholroyde@btinternet.com](mailto:jholroyde@btinternet.com), [www.kca.org.uk](http://www.kca.org.uk)**

KCA (UK) is committed to the principles of equality of opportunity for all and welcomes applications from people with experience of substance use or who have had previous problems with substance misuse.  
 Charity No: 292824

**Course Administrator**

required for a training company based in Womenswold, just outside Canterbury. Duties to include telephone, filing and general administration.  
Monday-Friday 8:30am to 5:00pm.  
Please telephone Jeanette on 01227 831840 or via email [jeanette@amacsports.co.uk](mailto:jeanette@amacsports.co.uk) for further information.



Let's have something tasty!

**Production Manager**

A genuine hands-on leadership role, directly responsible for the day-to-day supervision of a production team, with a brief to ensure performance levels meet and exceed output targets across the key areas of safety, quality and productivity. With a proven track record in a similar production or first-line management position, the successful candidate must have a solid production background gained in a food manufacturing environment, coupled with a results-driven approach and strong leadership skills.

This position requires a Sunday-Thursday work pattern.

**Tesales/Order Processor**

Ideal candidate will be processing orders, answering sales calls, processing faxed and emailed orders, ringing existing account holders to request orders and must be computer literate, hard working and enthusiastic.

This is a part time position and the successful candidate will be required to work from 10am to 2.30pm Monday to Friday.

**Driver**

Early morning delivery driver (up to 3 tonnes van) required to deliver in the South East and London area.

Hours up 40 per week starting early morning with good rates of pay.

Successful applicants must have a clean driving licence and be presentable and polite.

Please apply in writing, enclosing your CV, to:  
The Personnel Manager, Anchor Catering Ltd.,  
Unit 2 Wotton Trading Estate, Wotton Road, Ashford,  
Kent TN23 6LL or by e-mail to  
[mail@anchorcatering.co.uk](mailto:mail@anchorcatering.co.uk)  
Telephone: 01233 665533

**Experienced Manager**

required for Care Home in Medway.

£16,000 per annum

Experience in Care NVQ 3 or 4 is essential. RMA is preferred but not essential as training will be given to successful candidate.

To apply please call Mr Kumar on 07939 192711 or email [cherryacre5@aol.com](mailto:cherryacre5@aol.com)



KOS  
media

OTE  
£20k

[www.kentnews.co.uk](http://www.kentnews.co.uk)  
[www.jobsforkent.co.uk](http://www.jobsforkent.co.uk)  
[www.yourkenttv.co.uk](http://www.yourkenttv.co.uk)

**Recruitment Advertising Executive**

Based at our offices near Ashford

Are You?

enthusiastic  
a team player  
confident  
driven  
self motivated  
willing to succeed  
tenacious

We Offer:

- Rewards - Bonus • Good basic Salary • Award Winning Company • Friendly Atmosphere • Opportunities
- Lively Team • Fast Paced Work Environment

To join a visionary and exciting media company, please phone Christine Davidson, Recruitment Advertising Manager in the first instance on 01303 817040

To  
advertise in  
this section



01303  
817040

**FIELD SERVICE ENGINEER**

A versatile Field Service Engineer is required for a small company based in Sevenoaks.

Duties to include the Service and Calibration of Laboratory Equipment.

The ideal candidate would need to be flexible, forward thinking and organised.

Electro-mechanical, Refrigeration and Autoclave/Centrifuge experience an advantage.

Must be prepared to travel throughout the UK.

To apply please telephone: 01732 743901



## THE THOMAS AVELING SCHOOL



INVESTOR IN PEOPLE

(A Foundation Technology College)  
Arethusa Rd, Rochester, Kent ME1 2UW  
Headteacher: Mr R J Hart, BED, MA

Tel: 01634 844809 Fax: 01634 818385

Email: [office@thomasaveling.co.uk](mailto:office@thomasaveling.co.uk) Website: [www.thomasaveling.co.uk/jobs](http://www.thomasaveling.co.uk/jobs)

**FINANCE OFFICER**

Full time (37 hours per week)

Salary: NJC Scale B2 point 32-41 (presently £26,067 - £33,291)

We are seeking to recruit a pro-active and self-motivated person, with a practical aptitude for personnel management and experience of working in an accounting environment, preferably within the educational sector, to lead and further develop the Finance Office at this popular Rochester secondary school. Formal accounting qualifications preferred but not essential as the opportunity to gain relevant qualifications will be afforded to the right candidate. The post-holder will need to be responsive to demand, capable of working on their own initiative and be a key member responsible for maintaining school finance and accounting systems.

**JUNIOR FINANCE CLERK**

Full time term-time only (37 hours per week)

Salary: NJC Scale D2 point 12-21 (presently £14,492 - £18,430 pro-rata)

We are also seeking to recruit a self-motivated Finance Clerk, reporting to the Finance Officer, to support the creditor control, cash management and banking functions. Candidates should be conscientious, accurate and computer literate. This post will provide an opportunity for the successful candidate to develop essential skills for progression in the area of Finance.

Further details for both vacancies and school application form available on school website

The Thomas Aveling School is an Equal Opportunities Employer and is committed to safeguarding the welfare of all students. Offers of appointment will be subject to an enhanced CRB check

Letters of application with CV to be sent to: Mr S Rayner, Finance and Business Manager to the school at the above address.

Closing date for applications: WEDNESDAY 22nd OCTOBER 2008

## The Royal School of Military Engineering Instructors

Salary £28,219 - £30,312

MidKent College (MKC) is delighted to partner the Royal School of Engineering (RSME) at Brompton Barracks, Chatham.

We will provide the trades and technical engineering training for over 8500 Royal Engineers each year and are recruiting a number of key posts to complement the teams already in place at the RSME.

If you are a qualified & experienced Trades Engineer looking for a change in career, then this could be the ideal opportunity for you.

For Trades roles, you are unlikely to have formal teaching experience but this is not essential as we will provide you with the skills you need and work with you to help you gain the appropriate teaching qualifications.

If the prospect of passing your skills onto Royal Engineer sappers appeals to you, then consider the positions shown below and get in touch with us.

- Electrical Instructors
- Heating and Plumbing Instructors
- Air Conditioning and Refrigeration Instructors
- Electrical and Mechanical Draughtsman
- Land Surveyors

These are key appointments and the successful candidates will need to demonstrate that they have the practical skills and knowledge of their trade and have the potential to develop into first class instructors. Training will be provided.

For an application form and job description please: Visit our website [www.midkent.ac.uk](http://www.midkent.ac.uk)  
Email: [rsme.recruitment@midkent.ac.uk](mailto:rsme.recruitment@midkent.ac.uk)  
Telephone 01634 845402 (24 hour answer machine)

For an informal discussion on these positions, please call: Ken Pullan on 07725128661

Closing Date Friday 15th November 2008



Mid-Kent College is an equal opportunity employer



The College is committed to Equal Opportunities and to selection on merit. It welcomes applications from all sections of society. We particularly welcome and encourage applications from under represented groups including black, minority ethnic and disabled people.



### Education Welfare Officer - Canterbury Coastal Local Children's Services Partnership (LCSP)

Grade Kent Scheme 7:

£20,061 - £22,825 per annum pro rata

Attendance and Behaviour Service,  
Clover House, Whitstable, East Kent

37 hours per week, term time only

Education Welfare Officers work with schools, families and pupils to promote regular school attendance. The work is challenging and requires the ability to work independently as well as being a good team member. You will receive in service training, regular supervision and team support in your work with schools, pupils, their families and other agencies.

The ability to travel across a wide geographical area in a timely and flexible manner at various times of the day is required as visiting schools and homes etc is essential to the work. Essential travel allowance is payable.

This post is subject to an Enhanced Disclosure Application to the Criminal Records Bureau.

For further information about this post, please contact Heidi McGee, District and Court Co-ordinator on 01227 284495.

To apply, visit [www.kent.gov.uk/jobs](http://www.kent.gov.uk/jobs) Alternatively, please email [recruitment.line@kent.gov.uk](mailto:recruitment.line@kent.gov.uk) or call 0845 8247 904.  
Please quote reference number CFE/08/0534.

Closing date: Midday, 3rd November 2008.

Interviews to be held on: 19th November 2008  
at Clover House.



A great place to work.  
Our services aren't the same,  
so neither are our people.



[www.kent.gov.uk/jobs](http://www.kent.gov.uk/jobs)





**Requires Care Staff (£6.60 - 7.65 per hour) and Kitchen Staff (£5.75 - 6.90 per hour) at Mount Ephraim House, Tunbridge Wells**

Greensleeves Homes Trust is a "not-for-profit" charitable organisation providing residential care throughout the midlands, west and south of England. The aim of the organisation is to supply care and support in a way that takes into account individual needs and respects the rights of residents to continue to choose how to live their lives. The Head Office is based in London, but each individual Home retains its own character and is responsible for its residents' day to day requirements. Mount Ephraim House has a distinguished and aristocratic history dating back to 1606. The Home is an impressive, period building set on the top of Mount Ephraim. It has delightfully well-kept, sheltered gardens and walkways; also much of interior is classical with carved wooden ceilings and paneled walls. Mount Ephraim House has a total of 38 bedrooms.

**Senior Care Assistants (Full Time or Part Time)**

We require senior care assistants to work throughout the week. The purpose of the senior care assistant role is to support the Manager and Management Team in all aspects of the Home's management and to teach, and lead by example, new and inexperienced staff members in all aspects of their work in the home. Senior Care Assistants are also required to provide on-call cover where necessary. The successful applicants must be at least NVQ 2 qualified and have experience of providing care in a similar capacity. NVQ 3 qualification and previous experience of supervising care staff is desirable.

**Day Care Assistants (Full Time or Part Time)**

We require care assistants to work throughout the week. The purpose of the care assistant role is to meet the personal care needs of residents and to help in the care of the residents' physical environment. Care assistants will also be expected help out in the general day to day running of the home. The successful applicants will need to demonstrate a genuine desire to meet the needs of residents in a way that preserves their dignity, and the ability to work to high standards. Previous experience of care and/or an NVQ level 2 qualification is desirable.

**Night Care Assistants (Part Time)**

We require night care assistants to work throughout the week. The purpose of the night care assistant role is to provide wakenful night duty cover in the Home and to undertake certain domestic duties which can be performed during night hours. The successful applicants will need to demonstrate a genuine desire to meet the needs of the resident in a way that preserves their dignity, and the ability to work to high standards. Previous experience of care and/or an NVQ level 2 qualification is desirable, together with an understanding of the difficulties of night work.

**Evening Cooks & Weekend Cooks (Part time)**

We require Cooks to work in the evening or on a Sunday. The Sunday shift would be 8:00am – 2:00pm, whilst evening shifts will be 3:00pm – 7:00pm. The purpose of the Cooks role is to prepare and serve nutritionally balanced and attractively presented food to residents. Cooks will also be required to maintain hygiene standards, and supervise staff. The successful applicants will be able to demonstrate a genuine desire to work with food and will have had previous experience of working in a food preparation role in a similar environment.

**Catering Assistants (Part Time)**

We require catering assistants to work during the week and at weekends. The shifts would be 8:00am – 2:00pm. The purpose of the Catering Assistants role is to assist the cook in the preparation of a healthy diet for the residents within the Home. The successful applicants will enjoy working in a kitchen environment and be able to demonstrate the ability to work under pressure. Previous experience of working in a kitchen environment would be desirable.

To apply for any of the above roles please request an application pack from David Wicksteed, Greensleeves Homes Trust, Unit 2 Regent Terrace, Rita Road, LONDON, SW8 1AW, (020 7793 1122) ([david.wicksteed@greensleeves.org.uk](mailto:david.wicksteed@greensleeves.org.uk)). The closing date for all posts is Monday 3rd November 2008.

The successful applicants will be appointed subject to a POVA check and an enhanced CRB disclosure. These posts are not subject to the Rehabilitation of Offenders Act 1974.

*Greensleeves Homes Trust is an equal opportunities employer and welcomes applications from all sections of the community.*

# Recruit for Christmas



**Advertise your Christmas vacancies with Kent's local newspapers and websites**

Looking for staff for the Christmas rush? Place your advertisement with us and reach 1,000s of potential job seekers.



For more information call the recruitment team on 01303 817040. [www.jobsforkent.co.uk](http://www.jobsforkent.co.uk)



## CAREERS IN HEALTH CARE ACROSS EAST KENT

### Your Skills Our Vision



Eastern and Coastal Kent

From Sheerness to Dungeness, Ashford to Ramsgate, over 710,000 people depend on Eastern and Coastal Kent NHS – and we put them at the heart of everything we do. All our staff work hard every day to improve health and well-being for the local community, to tackle health inequalities and to provide high quality, responsive and efficient services, both directly and through commissioning.

As one of Kent's largest employers, we aim to employ and train a world-class workforce capable of meeting our many challenges. In return for your skills and commitment we offer wide-ranging staff benefits including real investment in personalised career development, flexible working, childcare, final salary pension scheme and in-house discounts.

**Why not join us?**

#### STAFF BENEFITS PACKAGE

- Final salary pension scheme
- Occupational sickness benefit
- Lease car scheme for eligible staff
- Occupational health service
- Childcare
- Enhanced maternity pay
- Enhanced paternity pay
- Enhanced adoption pay
- Flexible Working Policies
- Extensive Training Programs
- Long service awards
- In-house discounts & external benefits

#### SELECTION OF CURRENT OPPORTUNITIES

##### ADMIN AND CLERICAL

**Corporate Records Officer**  
Salary: £20,225 to £26,123 pa  
Band: 5  
Hours: 37.5  
Location: FDS House, Whitstable  
Ref: 767-ECC542  
Closing date: 23/10/08

**Connecting for Health Facilitator (Primary Care) x 2**  
Salary: £20,225 to £26,123 pa  
Band: 5  
Hours: 37.5  
Location: FDS House, Whitstable  
Ref: 767-ECC531  
Closing date: 23/10/08

**Connecting for Health Change Co-ordinator (Primary Care)**  
Salary: £24,103 - £32,653  
Band: 6  
Hours: 37.5  
Location: Folkestone Health Centre  
Ref: 767-ECC534  
Closing date: 23/10/08

**Clinical Records Officer**  
Salary: £20,225 - £26,123  
Band: 5  
Hours: 37.5  
Location: Folkestone Health Centre  
Ref: 767-ECC539  
Closing date: 23/10/08

**Senior Registration Authority Agent x2**  
Salary: £17,316 to £20,818 pa  
Band: 4  
Hours: 37.5  
Location: FDS House, Whitstable  
Ref: 767-ECC546  
Closing date: 23/10/08

##### Intermediate Care Nurse

Salary: £20,225 to £26,123 pa  
Band: 5  
Hours: 37.5  
Location: Folkestone  
Ref: 767-EIC558  
Closing date: 23/10/08

**Connecting for Health Support Officer (Primary Care)**  
Salary: £17,316 - £20,818  
Band: 4  
Hours: 37.5  
Location: Folkestone Health Centre  
Ref: 767-ECC533  
Closing date: 23/10/08

**IT Technician x2**  
Salary: £20,225 to £26,123 pa  
Band: 5  
Hours: 37.5  
Location: FDS House, Whitstable  
Ref: 767-ECC550  
Closing date: 23/10/08

**Patient & Public Engagement Manager**  
Salary: £29,091 to £38,352 pa  
Band: 7  
Hours: 37.5  
Location: Waterloo Crescent, Dover  
Ref: 767-ASH177  
Closing date: 23/10/08

**Archiving Administrator**  
Salary: £14,834 - £17,732  
Band: 3  
Hours: 37.5  
Location: FDS House, Whitstable  
Ref: 767-ECC540  
Closing date: 23/10/08

##### Head of ICT

Salary: £37,106 - £44,527  
Band: 8a  
Hours: 37.5  
Location: FDS House, Whitstable  
Ref: 767-ECC536  
Closing date: 23/10/08

**Connecting for Health Implementation Manager**  
Salary: £29,091 to £38,352 pa  
Band: 7  
Hours: 37.5  
Location: Whitstable  
Ref: 767-ECC528  
Closing date: 23/10/08

**IT Technical Engineer x3**  
Salary: £20,225 to £26,123 pa  
Band: 5  
Hours: 37.5  
Location: FDS House, Whitstable  
Ref: 767-ECC549  
Closing date: 23/10/08

**Information Security Officer**  
Salary: £20,225 - £26,123  
Band: 5  
Hours: 37.5  
Location: FDS House, Whitstable  
Ref: 767-ECC543  
Closing date: 23/10/08

**Network Security Co-ordinator**  
Salary: £24,103 to £32,653 pa  
Band: 6  
Hours: 37.5  
Location: FDS House, Whitstable  
Ref: 767-ECC544  
Closing date: 23/10/08

##### Corporate Records Co-ordinator

Salary: £24,103 to £32,653 pa  
Band: 6  
Hours: 37.5  
Location: FDS House, Whitstable  
Ref: 767-ECC541  
Closing date: 23/10/08

**Secondary Users Officer**  
Salary: £20,225 to £26,123 pa  
Band: 5  
Hours: 37.5  
Location: FDS House, Whitstable  
Ref: 767-ECC545  
Closing date: 23/10/08

##### NURSING AND MIDWIFERY REGISTERED

**Intermediate Care Nurse**  
Salary: £20,225 to £26,123 pa  
Band: 5  
Hours: 37.5  
Location: Folkestone  
Ref: 767-EIC558  
Closing date: 23/10/08

**Community Nurse**  
Salary: £20,225 to £26,123 pa  
Band: 5  
Hours: 37.5  
Location: Margate  
Ref: 767-EIC514  
Closing date: 23/10/08

**Paediatric Haemophilia Community Nurse**  
Salary: £24,103 to £32,653 pa  
Band: 6  
Hours: 22.5  
Location: Kent and Canterbury Hospital  
Ref: 767-ASH164  
Closing date: 24/10/08





**Now recruiting:**  
**Qualified MOT Tester**  
At our Strood Branch

To apply please contact:  
Tanya on: 01634 717 747 or  
on line at [www.mrclutch.com](http://www.mrclutch.com)



Charity Registration No. 1103190 • Company No. 4378206  
Dartford, Gravesham and Swanley Mencap is a registered charity established to support people with learning disabilities. We are looking to appoint an Operations Manager to contribute to the overall management of all DCS Mencap's Operational Services in line with the vision and values of the company. This role will also deputise for the Chief Executive in her absence.

**OPERATIONS MANAGER**  
Base: Dartford, Kent  
Full-time 37hrs per week  
Salary: £37,543-£40,101  
NJC Paypoint: 46-49

To be considered for this post you must have Senior Management experience and a relevant professional qualification.

For an application pack, please ring Chantal Sandion on 01322 281833 or email us at [info@dgsmentcap.org.uk](mailto:info@dgsmentcap.org.uk). Alternatively, you can visit our website on [www.dgsmentcap.org.uk](http://www.dgsmentcap.org.uk). Prospective candidates may contact Liz Woodward, Chief Executive, for an informal chat by ringing the same number or email [liz.woodward@dgsmentcap.org.uk](mailto:liz.woodward@dgsmentcap.org.uk).

Closing date: Friday 31st October 2008  
Preliminary interview: Wednesday 12th November 2008  
Interview date: Monday 24th November 2008

**The Will Adams Centre**  
Woodlands Road, Gillingham, Kent ME7 2BX  
Phone: 01634 337111 email: [mltj001@medway.org.uk](mailto:mltj001@medway.org.uk)

**Teacher of Humanities**  
Ref: CA0315

Salary: Main/upper scale pay, plus SEN points

Are you committed to the development of young people to help them reach their potential? Are you resourceful, flexible and enthusiastic? If so, this could be the job for you.

The Will Adams Centre is a KS4 pupil referral unit located in Gillingham, Kent. The school provides support and educational opportunities to students who have been permanently excluded from mainstream school or who find it difficult to access their educational entitlement. You will have key responsibility for developing and delivering a range of programs, including GCSE, to students who are disaffected or those with behavioural/emotional difficulties. You must be registered with the GTC and have proven experience of teaching humanities.


In return, we can offer:

- the opportunity to develop teaching skills;
- a welcoming and supportive environment
- a commitment to your professional development.

Any offer of appointment will be subject to a Criminal Records Bureau enhanced disclosure.

For more information and an application form, please contact Mrs J Patterson, Headteacher, on 01634 337111.

Closing date: 31 October 2008




**NORTHFLEET SCHOOL FOR GIRLS**

As a Building Schools for the Future school we are undergoing a significant new build project commencing the summer of 2008. Our curriculum too is changing to meet the best needs of students. As well as the traditional pathways through A Levels we are committed to providing Diploma, Young Apprenticeships and a range of vocational courses. At KS3 we are developing flexible learning to energise and challenge our students.

Our new focus means we have an opportunity for a

**Careers Officer**  
20 hours per week term time only (hours to be agreed)  
Kent Scheme Grade 5 - £7584 - £8340 p.a.

At Northfleet School for Girls our careers programme is an integral part of pupils' education. We wish to appoint a Careers Officer to provide a guidance service for the whole school community in partnership with the Connexions Service and in support of the Personal, Social, Health Education (PSHE) curriculum.

Applicants should have experience of working with young people in a similar category and have an NVQ in Careers Guidance or similar work related experience. Northfleet School for Girls is an equal opportunities employer and operates a no smoking policy within the whole school site.

For further information please contact Mrs Theresa Davies or Mrs Sam Chisholm or check the school website - [www.northfleetgirls.kent.sch.uk](http://www.northfleetgirls.kent.sch.uk)

Northfleet School for Girls Tel: 0844 477 2525 email: [personnel@northfleetgirls.kent.sch.uk](mailto:personnel@northfleetgirls.kent.sch.uk)

Closing date for applications: Friday, 31 October 2008

To advertise in this section ☎ 01303 817040



**The Royal School of Military Engineering Lecturers**

**Salary c£36k (up to £45k for Senior Lecturer Civil Engineering)**

MidKent College (MKC) is delighted to partner the Royal School of Engineering (RSME) at Brompton Barracks, Chatham.

We will provide the trades and technical engineering training for over 8500 Royal Engineers each year and are recruiting a number of key posts to complement the teams already in place at the RSME.

We are currently building our management structure and now need Degree Qualified Engineers in a number of disciplines to take up lecturing posts within the RSME Professional Engineering Wing. Teaching experience would be an advantage but we recognise that it is unlikely that this has been within your experience to date unless you are already in the education sector, so we will provide you with the skills and qualifications required.


If the prospect of using your professional engineering skills and experience to develop the engineering capability of tomorrows military engineer, then we would like to hear from you.

- Construction
- Electrical
- Civil Engineering
- Project Management
- Mechanical

These are key appointments and candidates will need to demonstrate that they can communicate effectively and have a strong understanding of their engineering discipline.


For an application form and job description please: Visit our website [www.midkent.ac.uk](http://www.midkent.ac.uk)  
Email: [rsme.recruitment@midkent.ac.uk](mailto:rsme.recruitment@midkent.ac.uk)  
Telephone 01634 845402 (24 hour answer machine)

For an informal discussion on these positions, please call: Ken Pullan on 07725128661  
Closing Date Friday 15th November 2008



**MKC Training Services Limited**  
at The Royal School of Military Engineering

The College is committed to Equal Opportunities and to selection on merit. It welcomes applications from all sections of society. We particularly welcome and encourage applications from under represented groups including black, minority ethnic and disabled people.



Mid-Kent College is an equal opportunity employer



**MidKent College**

MidKent College based in the Medway Towns and Maidstone is seeking to appoint outstanding individuals in the following areas:

**Lecturer Hair Design** Ref: P0128  
Salary: £25,092 to £28,719

We are seeking to appoint enthusiastic professional to teach, assess and participate in the development of Hair Design programmes. The successful candidate will develop and deliver high quality training and assessment procedures to full and part-time learners. The applicant must have a relevant vocational/academic qualification and should hold or be willing to work towards a teaching qualification. Recent industry experience would be advantageous.

**Information, Advice & Guidance Advisor** Ref: M0262  
Fixed Term Contract Maternity Cover  
Salary: £23,669 - £30,027

The successful candidate will provide careers advice and support the Matrix accredited IAG service across all College Campuses. You will have a degree or relevant professional qualification in Guidance at level 4 or above and experience delivering careers guidance to a wide range of learners.

**Floristry Technician** Ref: P0457  
(18.5 hours per week Term Time – 38 weeks)  
Salary: £11,599 - £17,200 pro-rata

We have an exciting opportunity for a Floristry Technician who will be responsible for providing assistance and technical support to staff and learners within the Floristry department. In addition, you will prepare equipment for lessons and place and receive orders and ensure equipment is maintained. Ideally, you will have experience in the field of Floristry and be able to demonstrate good administrative skills.

Closing date: Friday, 31 October 2008

Mid-Kent College is working in partnership with RBLI Employment Solutions to support individuals who have a disability or health condition in the application, interview and employment with the college. If you would like any further information regarding RBLI, or require assistance with your application process then please contact RBLI on 0800 783 1144 or visit their website [www.rbli.co.uk](http://www.rbli.co.uk) for information, advice and guidance.

The College is committed to safeguarding and promoting the welfare of young people and vulnerable adults and anyone applying for work with the College is expected to share this commitment. Any offer of employment is subject to an Enhanced Criminal Records Bureau Disclosure.

Application forms and further details are available from [www.midkent.ac.uk](http://www.midkent.ac.uk). Alternatively, please e-mail [job.applications@midkent.ac.uk](mailto:job.applications@midkent.ac.uk). For individuals without access to e-mail or the internet please call the Personnel department on 01634 845402 (24 hour answer machine). In all communication with the College please quote the appropriate job title and reference number.

Mid-Kent College is an equal opportunities employer





# yourlocal professionals

Advertise your business on [yourkenttv.co.uk](http://yourkenttv.co.uk) – the Kent local search directory  
find out more about us and our products and services online

**TO ADVERTISE**



Email us at [classified@kosmedia.co.uk](mailto:classified@kosmedia.co.uk)



Telephone us on 01303 817150



Fax us on 01303 817001

## AERIAL & SATELLITE SERVICES

**Special Offer: Installed with all fittings**  
**Digital Aerials £149**

Call now 01233 639900

Aerials & Satellite Specialists  
Sky, Freeview  
& Sky+  
Serving Kent 7 days a week

DMS Technology  
Ashford, Kent  
[www.digitalaerialskent.co.uk](http://www.digitalaerialskent.co.uk)



## DOMESTIC CLEANING

an industry leader in cleaning

Carpet & Upholstery Cleaning  
Window Cleaning • Sparkle Cleans  
Builders Cleans

Our goal...  
is to exceed your expectations

[www.davies-response.co.uk](http://www.davies-response.co.uk)

0845 600 3616



## MOTORS - CARS WANTED

**ACT NOW  
WANTED**

Instant cash for your car, truck,  
van & caravans, From £50-£5000  
Buyer will call, DVLA notified

T: 01227 749039 M: 07799 487097

## REMOVALS

**Man Van & Lady**

Removals/Deliveries & Collections

FREE Friendly Estimates

Single Items – Multiple Drops

Fully Insured

Call Us Now On

08454 678 258

Mob: 07546 255229

## BUILDERS

**The Property  
Enhancement  
Group**

A Professional Approach to Enhancing  
the Exterior & Interior of Your  
Residential & Commercial Property

- Brick Work
- Extensions
- Loft Conversions
- Driveways, Patios,  
Natural Stone Paving
- Roof Maintenance
- Property Maintenance

Extending the Enjoyment  
of Your Property



**THE PROPERTY  
ENHANCEMENT GROUP**  
01227 283813 or 07921 181779

## HOME IMPROVEMENTS



**PERFECT  
PROPERTIES**

Property Maintenance  
Restoration & Repair

Insurance approved  
20% discount for OAPs & registered disabled

Your satisfaction is our future

- Painting & decorating
- Gardening
- Landscaping
- Fencing
- Carpentry
- Flooring & tiling
- Driveway
- Plumbing & drainage
- Kitchens & bathrooms
- Wetrooms

For a professional and reliable service,  
phone now for your FREE quotation

**01233 643 992**

**07969 482 006**

[www.perfectpainting.co.uk](http://www.perfectpainting.co.uk)

80 Canterbury Road, South Willesborough,  
Ashford, Kent TN24 0BN

## MOTORS - CARS WANTED

**SCRAP CARS  
WANTED**

- FREE COLLECTION SERVICE
- UP TO £200 PAID PER VEHICLE
- CERTIFICATE OF DESTRUCTION ISSUED

We are an Authorised Treatment Facility (ATF) and we will  
register your vehicle as scrapped with the DVLA direct.

FREE PHONE 0800 288 8866  
OR VISIT [www.Car-scrap.co.uk](http://www.Car-scrap.co.uk)

ICM

## PLASTERING

**PJS Plastering**

Your Local Professional

For a Clean Friendly Service  
Great Prices - Fully Insured -  
And a Quality Finish

Call Pete for a FREE quote  
Tel: 01303 893149  
or Mob: 07912 220 201

## RETAIL

Something for everyone -  
Our two great stores in  
Canterbury are definitely worth visiting



Department Store

47 High Street, Canterbury 01227 456755

Furniture, Bed & Carpet Store

Maynard Road, Wincheap Ind.Est, Canterbury 01227 463550

[www.nasons.co.uk](http://www.nasons.co.uk)

## SPORTS/ACTIVITIES

**Ever tried Clay  
Pigeon Shooting?**

Come and have a go at



Every Sunday  
Morning  
9.30 - 12  
No appointment  
necessary

Greenfields Shooting Grounds

Sturry, Nr Canterbury Kent  
Tel: 01227 713222

[www.greenfieldsshooting.co.uk](http://www.greenfieldsshooting.co.uk)

## BUILDERS

**R.E Construction  
& Landscaping Ltd**



One Call Does It All

- Driveways • Patios • Extensions • Groundworks
  - Landscaping
- ALL BRICKWORK UNDERTAKEN  
FREE ESTIMATES

Tel: 01227 471483 M: 07736 682208

## KOS DIRECTORY

To search for  
more Professionals  
in your area, visit  
[yourkentTV.co.uk](http://yourkentTV.co.uk)

POWERED BY KOS MEDIA

## PUBLISHING

If you're a professional and  
would like to advertise  
your business here  
telephone **01303 817150**  
and speak to our friendly  
sales team – you'll be  
surprised how little it costs!

## WINDOWS, DOORS & CONSERVATORIES

**WINDOW, CONSERVATORY  
& DOOR SALE**



Specialist manufacturer and installer of  
double glazing windows, doors &  
conservatories

**FREephone 0800 195 00 00**

142 Newington Road, Ramgate  
[www.elephantwindows.co.uk](http://www.elephantwindows.co.uk)  
sales@elephantwindows.co.uk

## ONLINE TV

online **TV** as it happens

Watch the latest web TV sport news and action [kentnews.co.uk](http://kentnews.co.uk)

FOOTBALL • CRICKET • RUGBY • TENNIS • BOXING • ATHLETICS • GOLF • HORSE RACING • SNOOKER • MOTORSPORT • CYCLING



With Business Editor  
**TONY PATEY**

## BUSINESS BRIEFS

### An age-old problem will not go away

NEARLY half the working population – some 13 million people – is not saving enough to provide for a secure retirement, according to Kent-based Peter Camrass, a pensions planning expert.

He says if you earn £30,000 a year and expect to enjoy the same standard of living when you retire, you should be setting aside £600,000 in savings.

If you are 25, you should be saving 12 per cent of your earnings for retirement. However, if you're 40 and haven't already started saving, this figure rises to 22 per cent – almost a quarter of your weekly pay packet.

He said: "One problem is that we all have trouble seeing ourselves as old people and there's always something better to spend our money on today."

"There is also still an expectation that the state will provide, despite the fact that state pensions have been reducing in real terms for years."

### Learn how to cope at seminar with twist

KENT Invicta Chamber of Commerce is inviting members to a seminar with a topical twist.

As part of law firm Girlings' season of autumn seminars, Coping with the Credit Crunch takes place in Broadstairs tomorrow (Thursday) and again in Folkestone early next month.

Both are free. Thursday's event takes place at the Broadstairs campus of Canterbury Christ Church University between 8am and 9.30am.

The Folkestone seminar at the same time on Tuesday, November 4, in Europa House.

### Conference in control

FIFTY small businesses in Kent and Medway recently attended a breakfast conference titled Tougher Times? – Staying in Control, organised by the Federation of Small Businesses at Maidstone.

Delegates heard from Steve Tancock, Maidstone-head of Smith and Williamson, and Shirley Moore, head of debt recovery and insolvency at Brachers Law, on how to contend with weaknesses in competitors, customers and their own business, and how to maintain their independence.

VIEW THIS CLIP ON  
[yourkenttv.co.uk](http://yourkenttv.co.uk)

Your LOCAL TV ONLINE



Wayne Hemingway on the Thames Gateway at Construction Expo 2008

**FEELING THE PINCH:** Workers with the additional responsibility of caring for a long-term sick or disabled relative are being urged to plan for the worst by Acas



# Caring for the carer

WORKERS who also care for long-term sick relatives or partners at home dread the thought of getting ill themselves – it's their worst nightmare.

Now they are being urged by the UK's leading employment relations specialist to think what would happen if they, too, get sick.

The Advisory, Conciliation and Arbitration Service (Acas) says there are an estimated 737,750 people in this category in the South East – and they should seek proper advice.

It reckons many carers are often too pre-occupied or worried about the person they care for to look after themselves, and if they become

BY TONY PATEY

ill they are not only unable to look after their dependent but also can't go to work.

Paul Beard, area director at Acas South East, said: "Some employees may not even class themselves as a carer so it is important they find out what their rights are in the first instance."

"We would then advise employees to speak to their HR manager or line manager to see if there are ways to resolve any challenges they may be having balancing work and caring responsibilities."

"Before any discussions it is a good idea for carers to think of ways in which they could

overcome any challenges, while also bearing in mind how this may affect their colleagues and the business as a whole. For example, one solution may be to introduce flexible working or working from home one day a week."

The trend of combining work and caring responsibilities is not a short-term issue and is set to continue, says Acas.

Some businesses already have flexible working policies in place and evidence shows it not only benefits employees but also employers through increased productivity, reduced overheads and improved staff retention rates.

Acas produces a free advice leaflet which is available at [www.acas.org.uk](http://www.acas.org.uk). Employers and employees can also call the helpline on 08457 474747.

Do you satisfy each of the following?

- Are you looking to set up, expand or modernise your business in Kent and Medway?
- Does your client base extend beyond Kent and Medway to serve regional, national or international markets?
- Does your project require an investment of £67,000 or more?

If so, you could be eligible for a grant of up to 15% of total capital expenditure.

For free advice and further information on eligibility visit [www.locateinkent.com/grants](http://www.locateinkent.com/grants) or call 01732 520700



**Locate in Kent**  
Perfect for Europe. Perfect for Business.

# Camier aiming to build on breakthrough season



**STAYING PUT:** Leon Camier is hoping for another successful season with the GSE Racing team in 2009

BRITISH Superbike rider Leon Camier will be staying with GSE Racing for the 2009 season, but believes the championship will be just as tough next season.

The 21-year-old from Ashford finished fifth in the overall standings this season and with the help of former team-mate Shane Byrne, they secured GSE Racing's fourth team title.

Camier recorded eight podiums, including his maiden superbike victory at Snetterton in June, which he followed up with wins at Croft and Silverstone.

Last month the Airwaves Ducati team announced they would no longer run the Italian machinery for

## SUPERBIKES

difficult as it is a completely new bike and the GSE team have always run Ducatis.

"However, I have every faith in the team to get the best out of the machinery, which we are getting a lot of factory support from.

"Some of the championship's best riders have moved on but there will be some new top riders coming into the series. It will not be easy that is for sure."

Despite riding bikes competitively for more than 17 years, Camier never held a road licence - until two weeks ago.

He added: "I had never got round to doing the test so it will be good to be able to ride on the roads."

2009, and have agreed a partnership with Japanese marque, Yamaha.

Camier feels the move to the Yamaha bike may take time to adjust to next season, but is looking forward to the challenge.

With the top-four riders in this year's British Superbike Championship moving to the World Championship for 2009, Camier insists the series will be just as tough.

He said: "I am over the moon to be staying with GSE Racing. I think switching to Yamaha will be

## Missed cut puts Barham on brink

GOLFER Benn Barham faces a nervous finish to the season after he missed the cut in the Portugal Masters to slip to 110th in the European Tour's Order of Merit.

Rounds of 75 and 72 were not enough for the 32-year-old to qualify for the weekend at the Oceanico Victoria course. It was the fifth tournament in a row he had missed out the cut, putting his Tour card in doubt.

Only the top 117 players on the Order of Merit automatically qualify for next season.

Barham needs one more result to make sure, with the penultimate tournament of the year beginning in Spain tomorrow.

**VIEW THIS CLIP ON**

[yourkenttv.co.uk](http://yourkenttv.co.uk)

Your LOCAL TV ONLINE



KOS Media's new weekly video round-up with all the latest Kent football news

## Ashford try but crash out of cup

ASHFORD RFC's dreams of a cup run in the EDF Energy Junior Vase were dashed on Saturday as they were knocked out by fellow Kent 1 side Sheppey.

Sheppey were just too strong for Ashford on the day. Ashford battled hard and were only a converted try away from taking the match as they fell to a 15-10 defeat.

Ashford will return to Kent 1 league action this Saturday as they take on struggling Askeans. Ashford will be confident of victory as Askeans are still yet to record their first victory of the season.

**PLEASE SEND YOUR SPORTS STORIES TO SPORTS EDITOR GLENN PEARSON AT [glenn.pearson@kosmedia.co.uk](mailto:glenn.pearson@kosmedia.co.uk)**



# Staff targets world team title after Olympic heroics

## TRACK CYCLING

BY TOM HOWARD

OLYMPIC gold medallist Jamie Staff hopes to become world champion once again, but admitted he has found it hard to motivate himself after his success in Beijing.

Just two months ago the 35-year-old from Brabourne completed his Olympic dream by being part of Great Britain's Team Sprint trio which triumphed against world champions France in the final.

After a life-changing experience in Beijing during the summer, the 2005 World Team Sprint champion wants to prove both he, and the Great Britain team, are the best in the World Championships in Poland next March.

Staff said: "Motivation is tough now. I sat down the other day and tried to work out what my next target is. Is it to be world champion or the next Olympics? For me to be world champion in the Team Sprint again would be my target."

"Obviously we beat the French in the Olympics, but they have won the last three World Championships. So I want to prove that we are the best. It is hard because I am looking forward to some good family time but I have got plenty of time."

"I have got back on the bike but I have got a really bad back at the moment and that was just after an hour and half. It was rough and the first few sessions were hard but it will get better."

Staff was honoured by his home town at a Civic Ceremony held by Ashford council last week and also took part in the Olympic heroes parade in London last Thursday.

The Olympic champion is still yet to decide whether he is to compete at London 2012, but hopes when the time comes to make a decision he will have the pace to get into the Great Britain team.

He added: "I am still aiming for the Olympics. I am taking it a year at a time but there is a lot of young talent coming through. Four years is a long time I am hoping I will still be there or thereabouts."



**BACK ON TRACK:** Olympic champion Jamie Staff is hoping to add to his Beijing gold with the Team Sprint world title next year

# Lisa aims to inspire stars of the future

## ATHLETICS

BY TOM HOWARD

GREAT Britain 1500 metre runner Lisa Dobriskey hopes her performances at the Beijing Olympics will have helped inspire the county's next generation of athletes.

The 24-year-old, who began her career at Ashford Athletics' Club, had an impressive season by qualifying for the Great Britain Olympic team.

She also tasted victory in the prestigious Fifth Avenue Mile in New York and Great North Run Mile events last month.

However, the Beijing Olympics holds bitter-sweet memories for Dobriskey, as she missed out on a medal by finishing an agonising fourth in the 1500m final.

Despite her Olympic disappointment, the reigning Commonwealth champion is urging youngsters to compete and pursue their sporting dreams.

She said: "I hope them seeing me perform at the Olympic Games has inspired youngsters to compete."

"I was at the Ashford 10K a couple of weeks ago and seeing such a large turnout of youngsters running in the fun run was excellent. Hopefully I can give something back and make them realise anything is possible in sport."

"My message to budding athletes is to keep at it. I have had a lot of injuries and it has never been easy. I have had a lot of people around me helping me achieve things. One thing about athletics is there are always peo-



Picture ADV KERRY  
**NEXT GENERATION:** Lisa Dobriskey hopes her success can inspire more youngsters to get involved in athletics

ple to help you but you have to seek them out."

With the state-of-the-art Julie Rose Athletics Stadium in Ashford, Dobriskey attributes her rise to success to the facilities at the venue, which she trained at as a young athlete.

She said: "The Julie Rose Stadium just opened as I started my career. I was so fortunate. Some of the older athletes only had fields

and parks to train on. To walk straight in and use those facilities was excellent."

Dobriskey will begin light training next week and has already decided to challenge for the 3000m title at the European Indoor Athletic Championships in Italy next March. Her other main priority next season is the World Athletic Championships in Berlin in August.

## FOOTBALL



Picture IOR KUPKO  
**MOVING FORWARD:** Ashford boss Steve Lovell says he is the man to guide Town to the play-offs

## I'm up to the task, says under-fire Ashford boss

AFTER a disappointing home defeat to Sittingbourne in front of the biggest crowd of the season last week, Ashford manager Steve Lovell feels he is the right man to take the club forward.

A crowd of more than 400 turned up at The Homelands to witness Ashford lose 1-0 to Gary Abbott's side. Fans were left disappointed and have questioned Lovell's position on the club's website forum.

Despite some fans calling for the manager's head, Lovell is upbeat and believes his side, who are three points from the play-offs, will be challenging for promotion come the end of the season.

He said: "The fans are entitled to their own opinions. It doesn't really bother me what some of them have been saying."

"People are entitled to their own feelings and say whatever they want. I have got a job to do. We are three points from the play-offs after 12 games. There is still a long way to go. We are still very much united at the football club at the moment."

After Ryman South rivals Folkestone Invicta announced their financial difficulties last Friday, Lovell has admitted he would be interested if some of their players were released and became available.

He said: "I am not sure of the extent of the troubles at Folkestone but if some of their players do become available I would be interested, as would any other club in the league."

"They have one or two quality players. At the moment I do not know what the situation is, whether the players have been released from their contracts, or not, so we will wait and see."

Folkestone Invicta bosses have warned the club could go under due to increasing financial pressures.

The club, managed by former Town boss Neil Cugley, were relegated into Ryman South last year and say they desperately need more cash if they are to survive.

Former Millwall defender Robbie Ryan, 31, who joined Ashford Town during the summer, has left the club with immediate effect.

## LEAGUE TABLES

### RYMAN DIVISION ONE SOUTH

	P	W	D	L	Gd	Pt
1 Kingstonian	11	8	3	0	+19	27
2 Cray Wanderers	11	6	3	2	+6	21
3 Folkestone Invicta	11	6	3	2	+6	21
4 Merstham	10	6	1	3	+2	19
5 Sittingbourne	11	6	1	4	-1	19
6 Metropolitan Police	12	4	6	2	+7	18
7 Walton & Hersham	11	5	2	4	+1	17
<b>8 Ashford Town</b>	<b>12</b>	<b>4</b>	<b>4</b>	<b>4</b>	<b>+6</b>	<b>16</b>
9 Dulwich Hamlet	10	4	3	3	+3	15
10 Leatherhead	12	4	3	5	-8	15
11 Godalming Town	10	4	2	4	+6	14
12 Burgess Hill Town	10	4	2	4	+4	14
13 Fleet Town	9	3	4	2	+3	13
14 Eastbourne Town	11	4	1	6	0	13
15 Worthing	9	3	3	3	-3	12
16 Walton Casuals	11	3	3	5	-6	12
17 Whyteleafe	9	3	1	5	-2	10
18 Chipstead	9	2	4	3	-5	10
19 Whitstable Town	12	3	1	8	-17	10
20 Corinthian-Casuals	12	2	3	7	-11	9
21 Croydon Athletic	10	2	2	6	-5	8
22 Crowborough Athletic	9	1	3	5	-5	6

Excludes last night's matches

## FIXTURES

Saturday, October 25:

Ryman Division One South

Ashford Town v Croydon Athletic (3pm)

Tuesday, October 28

Merstham v Ashford Town (7.45pm)

# Nine-goal thriller sees Bliby storm into next round of cup

## SUNDAY LEAGUE

DEFENDING was at a premium as Bliby won away at Aldington in a goal fest to progress in the pick of Sunday's games in the Premier Cup.

Paul Burt netted a hat-trick for Bliby in the 6-3 victory, which also saw James Percy grab a brace. Pat Kingwell completed the scoring for the visitors, who were always in charge.

Kennington joined Bliby in the next round thanks to an excellent 4-2 win at Artois. Ollie Finch starred by hitting a hat-trick, with Dan Barham scoring the other goal to send them through.

Strikes from Terry Perk and Tom Poynter were not enough for Bromley Green, who lost 3-2 away to Buffalo. Brewmaster and FC Sporto needed a penalty shootout to decide their tie after the game finished 1-1 following extra time. Sporto eventually went through on spot kicks 7-6.

In the only Premier Division match played on Sunday, Betersden beat Troggs 2-1 thanks to goals from Tom Ripley and Shane Sims. Andy Underdown scored for Troggs.

There were several one-sided matches in the Junior Cup, with Ashford Eagles on the receiving end of the biggest score line, outclassed by Insulators 10-0.

Bromley Green Reserves scored four goals away to Maidstone-based Locomotive but still went out, losing 6-4.

Five players got on the score sheet for Mersham as they won 7-1 at Invicta Sun,



Picture IOR KUPKO  
**CUP JOY:** Kennington (in blue) beat Artois to progress in the Premier Cup

while Galacticos were also on form, beating Red Heathens 7-0.

Churchill Royals also went through, with Iain Fellows hitting a hat-trick in an excellent 5-0 win away to Larkfield.

VIEW THIS CLIP ON

yourkenttv.co.uk

Your LOCAL TV ONLINE



Olympic athlete Lisa Dobriskey on her hopes for the future. Search 'Ashford'

**No more, no less, no mess,  
pay only for what you use!**



# **Rapid MIX** Kent Ltd

**Fresh concrete  
& screed**

- Any amount delivered
- Two barrows on a lorry
- Quality concrete and screed mixed on site
- 20 minutes delivery per cubic metre
- Production rate at up to 1m<sup>3</sup> a minute
- Open 7 days a week
- 24 hour service
- All groundworks undertaken
- Free friendly advice to trade and DIY

We also provide a unique supply and lay service where we undertake a wide variety of building services:

- Driveways
- Paths
- Extensions
- Bases
- Conservatories



**0800 633 5889**

**[www.rapidmixkent.co.uk](http://www.rapidmixkent.co.uk)**

100 Ellingham Ind Centre, Ellingham Way, Ashford, Kent TN23 6LZ